

GAPDH Antibody

Goat Polyclonal

Antigen Affinity Purified

Protein ID NP_002037.2

Catalog No. A303-878A

GeneID 2597

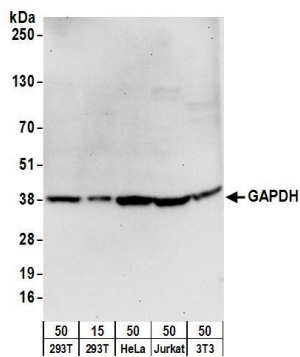
Lot No. A303-878A-1



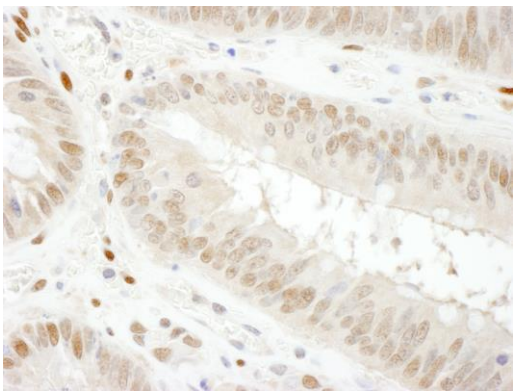
| | | | | | | | |
|------------------------------|--|--------------|-----------------|---------------------|-----------------|----------------------|--|
| APPLICATIONS | WB, IHC | | | | | | |
| SPECIES REACTIVITY | Human, Mouse | | | | | | |
| PRESUMED REACTIVITY | Based on 100% sequence identity, this antibody is predicted to react with Rat, D. melanogaster, Zebrafish, X. laevis, Chicken, Sheep, Bovine, Rabbit, Guinea pig_10141, Pig, Golden hamster and Cat | | | | | | |
| AMOUNT | 100 µl | | | | | | |
| CONCENTRATION | 1000 µg/ml | | | | | | |
| STORAGE/SHELF LIFE | 2 – 8° C / 1 year from date of receipt | | | | | | |
| PHYSICAL STATE | Liquid | | | | | | |
| BUFFER | Tris-citrate/phosphate buffer, pH 7 to 8 containing 0.09% Sodium Azide | | | | | | |
| ISOTYPE | IgG | | | | | | |
| ORIGIN | USA | | | | | | |
| PRODUCTION PROCEDURES | <p>Antibody was affinity purified using an epitope specific to GAPDH immobilized on solid support.</p> <p>The epitope recognized by A303-878A maps to a region between residue 175 and 225 of human Glyceraldehyde-3-Phosphate Dehydrogenase using the numbering given in entry NP_002037.2 (GeneID 2597).</p> <p>Antibody concentration was determined by extinction coefficient: absorbance at 280 nm of 1.4 equals 1.0 mg of IgG.</p> | | | | | | |
| APPLICATIONS | <p>Centrifuge tube to remove product from lid. Optimal working dilutions should be determined experimentally by the investigator. Prepare working dilution immediately before use.</p> <table><tr><td>Western Blot</td><td>1:500 – 1:2,500</td></tr><tr><td>Immunoprecipitation</td><td>Not recommended</td></tr><tr><td>Immunohistochemistry</td><td>1:500 – 1:2,000. Epitope retrieval with citrate buffer pH 6.0 is recommended for FFPE tissue sections.</td></tr></table> | Western Blot | 1:500 – 1:2,500 | Immunoprecipitation | Not recommended | Immunohistochemistry | 1:500 – 1:2,000. Epitope retrieval with citrate buffer pH 6.0 is recommended for FFPE tissue sections. |
| Western Blot | 1:500 – 1:2,500 | | | | | | |
| Immunoprecipitation | Not recommended | | | | | | |
| Immunohistochemistry | 1:500 – 1:2,000. Epitope retrieval with citrate buffer pH 6.0 is recommended for FFPE tissue sections. | | | | | | |
| APPLICATION NOTES | Western blot of lysates performed using standard western blot reagents and 4–20% SDS-PAGE. | | | | | | |
| IHC HUMAN CONTROLS | Colon Carcinoma, Ovarian Carcinoma | | | | | | |
| ADDITIONAL INFO | <p>https://www.bethyl.com/product/A303-878A</p> <p>Use the link above to view SDS, a current list of citations, and other product specific information.</p> | | | | | | |

This document certifies that this product has met all of the quality control standards defined by Bethyl Laboratories, Inc.
Eric McIntush, PhD | Chief Scientific Officer

Date: June 21, 2019



Detection of human and mouse GAPDH by western blot.
Samples: Whole cell lysate from HEK293T (15 and 50 µg), HeLa (50µg), Jurkat (50µg), and mouse NIH 3T3 (50µg) cells. *Antibodies:* Affinity purified goat anti-GAPDH antibody A303-878A (lot A303-878A-1) used for WB at 1 µg/ml. *Detection:* Chemiluminescence with an exposure time of 30 seconds.



Detection of human GAPDH by immunohistochemistry.
Sample: FFPE section of human colon carcinoma. *Antibody:* Affinity purified rabbit anti- GAPDH (Cat. No. A303-878A Lot1) used at a dilution of 1:1,000 (1 µg/ml). *Detection:* DAB