

BRG1 /SMARCA4 Antibody

Goat Polyclonal

Antigen Affinity Purified

Protein ID NP_003063.2

Catalog No. A303-877A

GeneID 6597

Lot No. A303-877A-1



APPLICATIONS	WB, IP, IHC
SPECIES REACTIVITY	Human, Mouse
AMOUNT	100 µl
CONCENTRATION	1000 µg/ml
STORAGE/SHELF LIFE	2 - 8° C / 1 year from date of receipt
PHYSICAL STATE	Liquid
BUFFER	Tris-citrate/phosphate buffer, pH 7 to 8 containing 0.09% Sodium Azide
ISOTYPE	IgG
ORIGIN	USA
PRODUCTION PROCEDURES	Antibody was affinity purified using an epitope specific to BRG1 /SMARCA4 immobilized on solid support.

The epitope recognized by A303-877A maps to a region between residue 50 and 100 of human BRM/SWI2-related Gene 1 using the numbering given in entry NP_003063.2 (GeneID 6597).

Antibody concentration was determined by extinction coefficient: absorbance at 280 nm of 1.4 equals 1.0 mg of IgG.

APPLICATIONS Centrifuge tube to remove product from lid. Optimal working dilutions should be determined experimentally by the investigator. Prepare working dilution immediately before use.

Western Blot 1:1,000 - 1:5,000

Immunoprecipitation 2 - 10 µg/mg lysate

Immunohistochemistry 1:500 - 1:2,000. Epitope retrieval with citrate buffer pH 6.0 is recommended for FFPE tissue sections.

APPLICATION NOTES Western blot of lysates performed using standard western blot reagents and 4-8% SDS-PAGE.

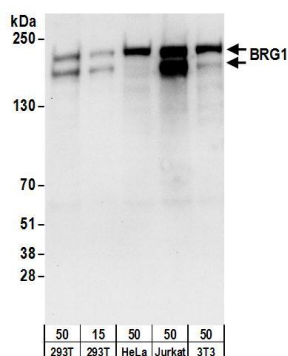
IHC HUMAN CONTROLS Breast Carcinoma, Colon Carcinoma, Ovarian Carcinoma, Prostate Carcinoma, Stomach Adenocarcinoma, Testicular Seminoma

IHC MOUSE CONTROLS Hybridoma Tumor, Renal Cell Carcinoma, Teratoma

ADDITIONAL INFO <https://www.bethyl.com/product/A303-877A>

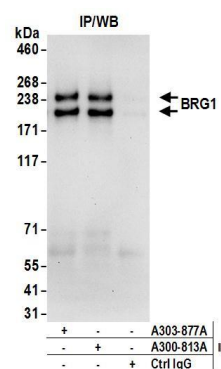
Use the link above to view SDS, a current list of citations, and other product specific information.

This document certifies that this product has met all of the quality control standards defined by Bethyl Laboratories, Inc.
Eric McIntush, PhD | Chief Scientific Officer Date: June 21, 2019



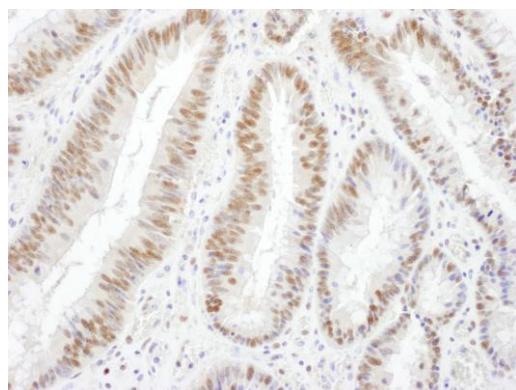
Detection of human and mouse BRG1 by western blot.

Samples: Whole cell lysate from HEK293T (15 and 50 µg), HeLa (50µg), Jurkat (50µg), and mouse NIH 3T3 (50µg) cells. **Antibodies:** Affinity purified goat anti-BRG1 antibody A303-877A (lot A303-877A-1) used for WB at 0.4 µg/ml. **Detection:** Chemiluminescence with an exposure time of 10 seconds.



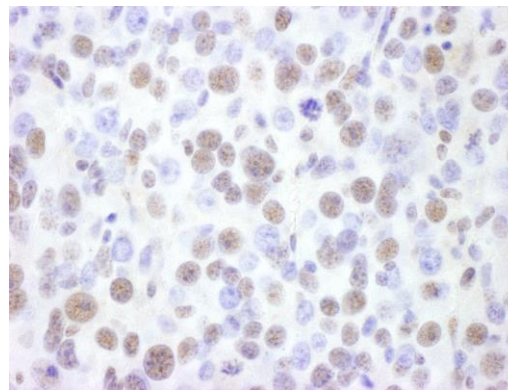
Detection of human BRG1 by western blot of immunoprecipitates.

Samples: Whole cell lysate (1 mg for IP; 20% of IP loaded) from HEK293T cells. **Antibodies:** Affinity purified goat anti-BRG1 antibody A303-877A (lot A303-877A-1) used for IP at 6 µg/mg lysate. BRG1 was also immunoprecipitated by rabbit anti-BRG1 antibody A300-813A. For blotting immunoprecipitated BRG1, A303-877A was used at 1 µg/ml. **Detection:** Chemiluminescence with an exposure time of 30 seconds.



Detection of human BRG1 by immunohistochemistry.

Sample: FFPE section of human colon carcinoma. **Antibody:** Affinity purified goat anti-BRG1 (Cat. No. A303-877A lot 1) used at a dilution of 1:1,000 (1 µg/ml). **Detection:** DAB



Detection of mouse BRG1 by immunohistochemistry.

Sample: FFPE section of mouse renal cell carcinoma. **Antibody:** Affinity purified goat anti-BRG1 (Cat. No. A303-877A lot 1) used at a dilution of 1:1,000 (1 µg/ml). **Detection:** DAB