

MED1 Antibody

Goat Polyclonal

Antigen Affinity Purified

Protein ID NP_004765.2

Catalog No. A303-876A

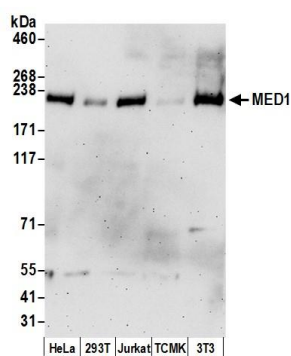
GeneID 5469

Lot No. A303-876A-1



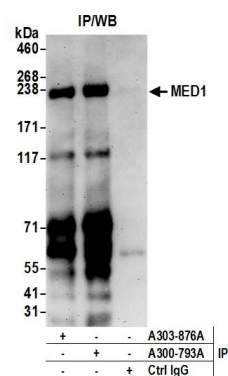
APPLICATIONS	WB, IP, IHC						
SPECIES REACTIVITY	Human, Mouse						
PRESUMED REACTIVITY	Based on 100% sequence identity, this antibody is predicted to react with Orangutan						
AMOUNT	100 µl						
CONCENTRATION	1000 µg/ml						
STORAGE/SHELF LIFE	2 - 8° C / 1 year from date of receipt						
PHYSICAL STATE	Liquid						
BUFFER	Tris-citrate/phosphate buffer, pH 7 to 8 containing 0.09% Sodium Azide						
ISOTYPE	IgG						
ORIGIN	USA						
PRODUCTION PROCEDURES	<p>Antibody was affinity purified using an epitope specific to MED1 immobilized on solid support.</p> <p>The epitope recognized by A303-876A maps to a region between residue 1531 and 1581 of human Mediator complex subunit 1 using the numbering given in entry NP_004765.2 (GeneID 5469).</p> <p>Antibody concentration was determined by extinction coefficient: absorbance at 280 nm of 1.4 equals 1.0 mg of IgG.</p>						
APPLICATIONS	<p>Centrifuge tube to remove product from lid. Optimal working dilutions should be determined experimentally by the investigator. Prepare working dilution immediately before use.</p> <table><tr><td>Western Blot</td><td>1:500 - 1:2,500</td></tr><tr><td>Immunoprecipitation</td><td>2 - 10 µg/mg lysate</td></tr><tr><td>Immunohistochemistry</td><td>1:500 - 1:2,000. Epitope retrieval with citrate buffer pH 6.0 is recommended for FFPE tissue sections.</td></tr></table>	Western Blot	1:500 - 1:2,500	Immunoprecipitation	2 - 10 µg/mg lysate	Immunohistochemistry	1:500 - 1:2,000. Epitope retrieval with citrate buffer pH 6.0 is recommended for FFPE tissue sections.
Western Blot	1:500 - 1:2,500						
Immunoprecipitation	2 - 10 µg/mg lysate						
Immunohistochemistry	1:500 - 1:2,000. Epitope retrieval with citrate buffer pH 6.0 is recommended for FFPE tissue sections.						
APPLICATION NOTES	Western blot of lysates performed using standard western blot reagents and 4-8% SDS-PAGE.						
IHC HUMAN CONTROLS	Breast Carcinoma, Non-Small Cell Lung Cancer						
ADDITIONAL INFO	<p>https://www.bethyl.com/product/A303-876A</p> <p>Use the link above to view SDS, a current list of citations, and other product specific information.</p>						

This document certifies that this product has met all of the quality control standards defined by Bethyl Laboratories, Inc.
Eric McIntush, PhD | Chief Scientific Officer Date: June 21, 2019



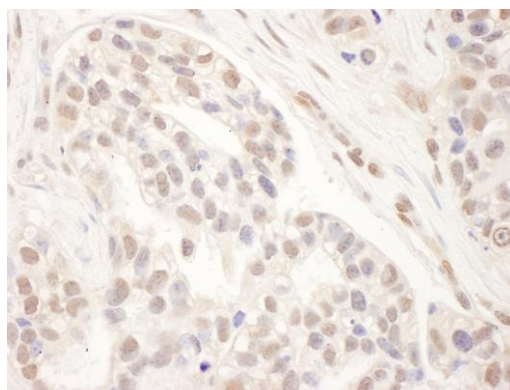
Detection of human and mouse MED1 by western blot.

Samples: Whole cell lysate (50 µg) from HeLa, HEK293T, Jurkat, mouse TCMK-1, and mouse NIH 3T3 cells prepared using NETN lysis buffer. **Antibody:** Affinity purified goat anti-MED1 antibody A303-876A (lot A303-876A-1) used for WB at 1 µg/ml. **Detection:** Chemiluminescence with an exposure time of 3 minutes.



Detection of human MED1 by western blot of immunoprecipitates.

Samples: Whole cell lysate (1.0 mg per IP reaction; 20% of IP loaded) from HEK293T cells prepared using NETN lysis buffer. **Antibodies:** Affinity purified goat anti-MED1 antibody A303-876A (lot A303-876A-1) used for IP at 6 µg per reaction. MED1 was also immunoprecipitated by rabbit anti-MED1 antibody A300-793A. For blotting immunoprecipitated MED1, A303-876A was used at 1 µg/ml. **Detection:** Chemiluminescence with an exposure time of 3 minutes.



Detection of human MED1 by immunohistochemistry.

Sample: FFPE section of human breast carcinoma. **Antibody:** Affinity purified goat anti-MED1 (Cat. No. A303-876A lot 1) used at a dilution of 1:1,000 (1 µg/ml). **Detection:** DAB