

RPA32 Antibody

Goat Polyclonal

Antigen Affinity Purified

Protein ID NP_002937.1

Catalog No. A303-874A

GeneID 6118

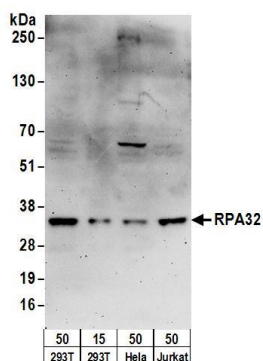
Lot No. A303-874A-1



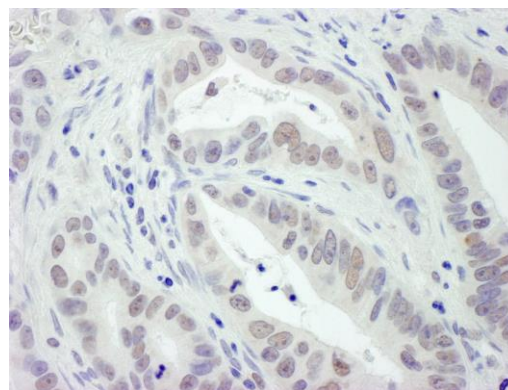
APPLICATIONS	WB, IHC						
SPECIES REACTIVITY	Human						
PRESUMED REACTIVITY	Based on 100% sequence identity, this antibody is predicted to react with Mouse, Rat and Orangutan						
AMOUNT	100 µl						
CONCENTRATION	1000 µg/ml						
STORAGE/SHELF LIFE	2 – 8° C / 1 year from date of receipt						
PHYSICAL STATE	Liquid						
BUFFER	Tris-citrate/phosphate buffer, pH 7 to 8 containing 0.09% Sodium Azide						
ISOTYPE	IgG						
ORIGIN	USA						
PRODUCTION PROCEDURES	<p>Antibody was affinity purified using an epitope specific to RPA32 immobilized on solid support.</p> <p>The epitope recognized by A303-874A maps to a region between residue 220 and 270 of human Replication Protein A2 (32kD) using the numbering given in entry NP_002937.1 (GeneID 6118).</p> <p>Antibody concentration was determined by extinction coefficient: absorbance at 280 nm of 1.4 equals 1.0 mg of IgG.</p>						
APPLICATIONS	<p>Centrifuge tube to remove product from lid. Optimal working dilutions should be determined experimentally by the investigator. Prepare working dilution immediately before use.</p> <table><tr><td>Western Blot</td><td>1:500 – 1:2,500</td></tr><tr><td>Immunoprecipitation</td><td>Not recommended</td></tr><tr><td>Immunohistochemistry</td><td>1:500 – 1:2,000. Epitope retrieval with citrate buffer pH 6.0 or Tris-EDTA pH 9.0 is recommended for FFPE tissue sections.</td></tr></table>	Western Blot	1:500 – 1:2,500	Immunoprecipitation	Not recommended	Immunohistochemistry	1:500 – 1:2,000. Epitope retrieval with citrate buffer pH 6.0 or Tris-EDTA pH 9.0 is recommended for FFPE tissue sections.
Western Blot	1:500 – 1:2,500						
Immunoprecipitation	Not recommended						
Immunohistochemistry	1:500 – 1:2,000. Epitope retrieval with citrate buffer pH 6.0 or Tris-EDTA pH 9.0 is recommended for FFPE tissue sections.						
APPLICATION NOTES	Western blot of lysates performed using standard western blot reagents and 4–20% SDS-PAGE.						
IHC HUMAN CONTROLS	Breast Carcinoma, Ovarian Carcinoma, Stomach Adenocarcinoma, Testicular Seminoma						
ADDITIONAL INFO	<p>https://www.bethyl.com/product/A303-874A</p> <p>Use the link above to view SDS, a current list of citations, and other product specific information.</p>						

This document certifies that this product has met all of the quality control standards defined by Bethyl Laboratories, Inc.
Eric McIntush, PhD | Chief Scientific Officer

Date: June 21, 2019



Detection of human RPA32 by western blot. *Samples:* Whole cell lysate from HEK293T (15 and 50 μ g), HeLa (50 μ g), and Jurkat (50 μ g) cells. *Antibodies:* Affinity purified goat anti-RPA32 antibody A303-874A (lot A303-874A-1) used for WB at 1 μ g/ml. *Detection:* Chemiluminescence with an exposure time of 3 minutes.



Detection of human RPA32 by immunohistochemistry. *Sample:* FFPE section of human stomach carcinoma. *Antibody:* Affinity purified goat anti-RPA32 (Cat. No. A303-874A lot 1) used at a dilution of 1:1,000 (1 μ g/ml). *Detection:* DAB