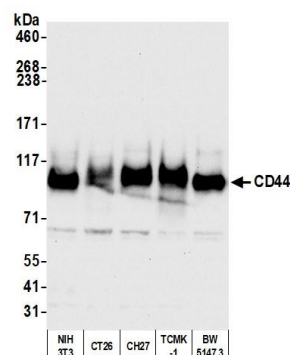
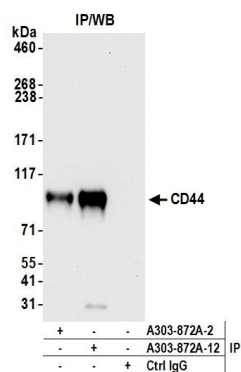


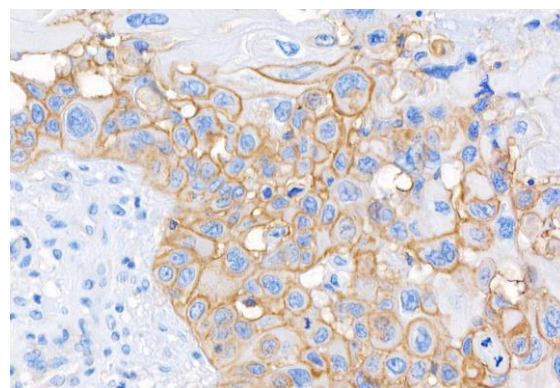
Detection of human CD44 by western blot. *Samples:* Whole cell lysate (10 µg) from A-549, HEK293T, HeLa, Hep-G2, and U2OS cells prepared using NETN lysis buffer. *Antibody:* Affinity purified rabbit anti-CD44 antibody A303-872A (lot A303-872A-12) used for WB at 0.04 µg/ml. *Detection:* Chemiluminescence with an exposure time of 3 seconds.



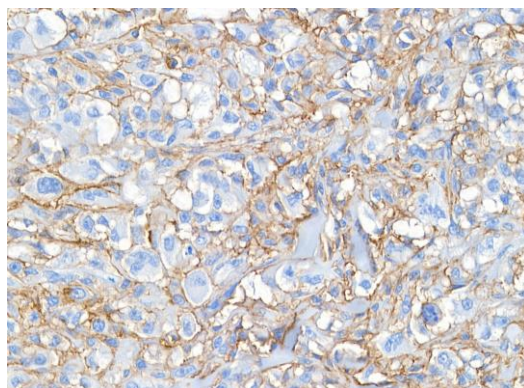
Detection of mouse CD44 by western blot. *Samples:* Whole cell lysate (50 µg) from NIH 3T3, CT26, CH27, TCMK-1, and BW5147.3 cells prepared using NETN lysis buffer. *Antibody:* Affinity purified rabbit anti-CD44 antibody A303-872A (lot A303-872A-12) used for WB at 0.04 µg/ml. *Detection:* Chemiluminescence with an exposure time of 10 seconds.



Detection of human CD44 by western blot of immunoprecipitates. *Samples:* Whole cell lysate (0.5 mg for IP; 20% of IP loaded) prepared using NETN buffer from HeLa cells prepared using NETN lysis buffer. *Antibodies:* Affinity purified rabbit anti-CD44 antibody A303-872A (lot A303-872A-12) used for IP at 2 µg per reaction. CD44 was also immunoprecipitated by a previous lot of this antibody (lot A303-872A-2). For blotting immunoprecipitated CD44, rabbit recombinant monoclonal antibody A700-038 was used 1:1,000. *Detection:* Chemiluminescence with an exposure time of 10 seconds.



Detection of human CD44 by immunohistochemistry. *Sample:* FFPE section of human head and neck squamous cell carcinoma. *Antibody:* Affinity purified rabbit anti-CD44 (Cat. No. A303-872A Lot12) used at a dilution of 1:5,000 (0.2µg/ml). *Substrate:* DAB



Detection of human CD44 by immunohistochemistry.

Sample: FFPE section of human melanoma.

Antibody: Affinity purified rabbit anti-CD44 (Cat. No. A303-872A Lot12) used at a dilution of 1:5,000 (0.2 µg/ml). *Substrate:* DAB