

# NOP14 Antibody

Rabbit Polyclonal

Antigen Affinity Purified

Protein ID NP\_003694.1

Catalog No. A303-869A

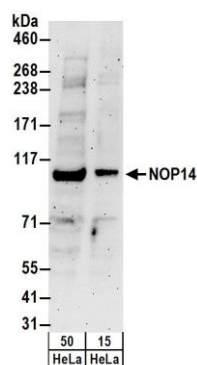
GeneID 8602

Lot No. A303-869A-1

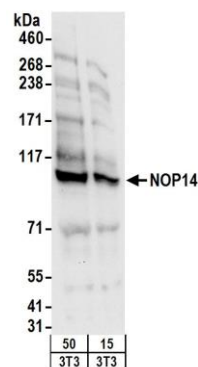


<b>APPLICATIONS</b>	WB
<b>SPECIES REACTIVITY</b>	Human, Mouse
<b>AMOUNT</b>	100 µl
<b>CONCENTRATION</b>	1000 µg/ml
<b>STORAGE/SHELF LIFE</b>	2 - 8° C / 1 year from date of receipt
<b>PHYSICAL STATE</b>	Liquid
<b>BUFFER</b>	Tris-citrate/phosphate buffer, pH 7 to 8 containing 0.09% Sodium Azide
<b>ISOTYPE</b>	IgG
<b>ORIGIN</b>	USA
<b>PRODUCTION PROCEDURES</b>	<p>Antibody was affinity purified using an epitope specific to NOP14 immobilized on solid support.</p> <p>The epitope recognized by A303-869A maps to a region between residue 750 and 800 of human Nucleolar Complex Protein 14 using the numbering given in entry NP_003694.1 (GeneID 8602).</p> <p>Antibody concentration was determined by extinction coefficient: absorbance at 280 nm of 1.4 equals 1.0 mg of IgG.</p>
<b>APPLICATIONS</b>	<p>Centrifuge tube to remove product from lid. Optimal working dilutions should be determined experimentally by the investigator. Prepare working dilution immediately before use.</p> <p>Western Blot                      1:2,000 - 1:10,000</p> <p>Immunoprecipitation              Not recommended</p>
<b>APPLICATION NOTES</b>	Western blot of lysates performed using standard western blot reagents and 4-8% SDS-PAGE.
<b>ADDITIONAL INFO</b>	<p><a href="https://www.bethyl.com/product/A303-869A">https://www.bethyl.com/product/A303-869A</a></p> <p>Use the link above to view SDS, a current list of citations, and other product specific information.</p>

This document certifies that this product has met all of the quality control standards defined by Bethyl Laboratories, Inc.  
Eric McIntush, PhD | Chief Scientific Officer Date: June 21, 2019



**Detection of human NOP14 by western blot.** *Samples:* Whole cell lysate (15 and 50  $\mu$ g) from HeLa cells.  
*Antibodies:* Affinity purified rabbit anti-NOP14 antibody A303-869A (lot A303-869A-1) used for WB at 0.1  $\mu$ g/ml.  
*Detection:* Chemiluminescence with an exposure time of 3 minutes.



**Detection of mouse NOP14 by western blot.** *Samples:* Whole cell lysate (15 and 50  $\mu$ g) from mouse NIH 3T3 cells.  
*Antibodies:* Affinity purified rabbit anti-NOP14 antibody A303-869A (lot A303-869A-1) used for WB at 0.4  $\mu$ g/ml.  
*Detection:* Chemiluminescence with an exposure time of 10 seconds.