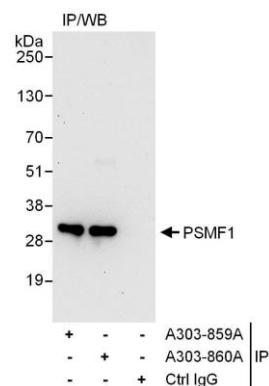


**Detection of human PSMF1 by western blot.** *Samples:* Whole cell lysate from HEK293T (15 and 50 µg), HeLa (H; 50 µg), and Jurkat (J; 50 µg) cells. *Antibodies:* Affinity purified rabbit anti-PSMF1 antibody A303-860A (lot A303-860A-1) used for WB at 0.4 µg/ml. *Detection:* Chemiluminescence with an exposure time of 3 minutes.



**Detection of human PSMF1 by western blot of immunoprecipitates.** *Samples:* Whole cell lysate (1 mg for IP; 20% of IP loaded) from HEK293T cells. *Antibodies:* Affinity purified rabbit anti-PSMF1 antibody A303-860A (lot A303-860A-1) used for IP at 6 µg/mg lysate. PSMF1 was also immunoprecipitated by rabbit anti-PSMF1 antibody A303-859A. For blotting immunoprecipitated PSMF1, A303-860A was used at 1 µg/ml. *Detection:* Chemiluminescence with an exposure time of 30 seconds.