

PSMD4 Antibody

Rabbit Polyclonal

Antigen Affinity Purified

Protein ID NP_002801.1

Catalog No. A303-856A

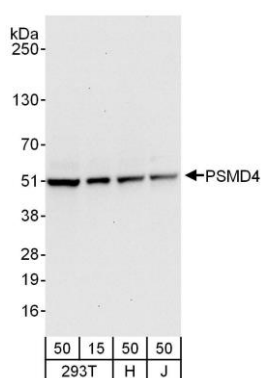
GeneID 5710

Lot No. A303-856A-1

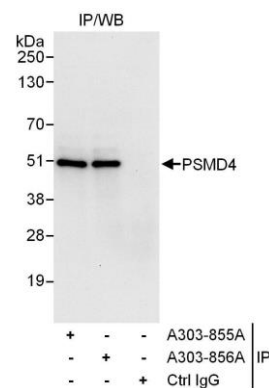


| | | | | | | | |
|------------------------------|---|--------------|--------------------|---------------------|---------------------|----------------------|--|
| APPLICATIONS | WB, IP, IHC | | | | | | |
| SPECIES REACTIVITY | Human | | | | | | |
| PRESUMED REACTIVITY | Based on 100% sequence identity, this antibody is predicted to react with Bovine | | | | | | |
| AMOUNT | 100 µl | | | | | | |
| CONCENTRATION | 1000 µg/ml | | | | | | |
| STORAGE/SHELF LIFE | 2 - 8° C / 1 year from date of receipt | | | | | | |
| PHYSICAL STATE | Liquid | | | | | | |
| BUFFER | Tris-citrate/phosphate buffer, pH 7 to 8 containing 0.09% Sodium Azide | | | | | | |
| ISOTYPE | IgG | | | | | | |
| ORIGIN | USA | | | | | | |
| PRODUCTION PROCEDURES | <p>Antibody was affinity purified using an epitope specific to PSMD4 immobilized on solid support.</p> <p>The epitope recognized by A303-856A maps to a region between residue 327 and 377 of human Proteasome (Prosome, Macropain) 26S Subunit, non-ATPase, 4 using the numbering given in entry NP_002801.1 (GeneID 5710).</p> <p>Antibody concentration was determined by extinction coefficient: absorbance at 280 nm of 1.4 equals 1.0 mg of IgG.</p> | | | | | | |
| APPLICATIONS | <p>Centrifuge tube to remove product from lid. Optimal working dilutions should be determined experimentally by the investigator. Prepare working dilution immediately before use.</p> <table><tr><td>Western Blot</td><td>1:2,000 - 1:10,000</td></tr><tr><td>Immunoprecipitation</td><td>2 - 10 µg/mg lysate</td></tr><tr><td>Immunohistochemistry</td><td>1:1,000 - 1:5,000. Epitope retrieval with citrate buffer pH 6.0 is recommended for FFPE tissue sections.</td></tr></table> | Western Blot | 1:2,000 - 1:10,000 | Immunoprecipitation | 2 - 10 µg/mg lysate | Immunohistochemistry | 1:1,000 - 1:5,000. Epitope retrieval with citrate buffer pH 6.0 is recommended for FFPE tissue sections. |
| Western Blot | 1:2,000 - 1:10,000 | | | | | | |
| Immunoprecipitation | 2 - 10 µg/mg lysate | | | | | | |
| Immunohistochemistry | 1:1,000 - 1:5,000. Epitope retrieval with citrate buffer pH 6.0 is recommended for FFPE tissue sections. | | | | | | |
| APPLICATION NOTES | <p>Western blot of immunoprecipitates performed using Normal Pig Serum (Cat. No. S100-020), Goat anti-Rabbit Light Chain HRP Conjugate (Cat. No. A120-113P) and 4-20% SDS-PAGE (link to IP-western blot protocol in Additional Info section below).</p> <p>Western blot of lysates performed using standard western blot reagents and 4-20% SDS-PAGE.</p> | | | | | | |
| IHC HUMAN CONTROLS | Breast Carcinoma, Colon Carcinoma, Ovarian Carcinoma | | | | | | |
| ADDITIONAL INFO | <p>https://www.bethyl.com/product/A303-856A</p> <p>Use the link above to view SDS, a current list of citations, and other product specific information.</p> <p>IP-western blot protocol: https://www.bethyl.com/content/protocol_IP_WB</p> | | | | | | |

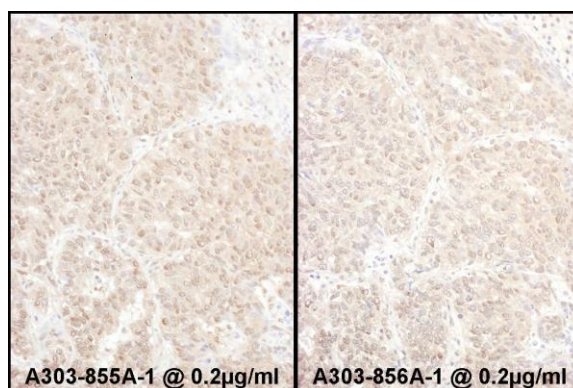
This document certifies that this product has met all of the quality control standards defined by Bethyl Laboratories, Inc.
Eric McIntush, PhD | Chief Scientific Officer Date: June 21, 2019



Detection of human PSMD4 by western blot. *Samples:* Whole cell lysate from HEK293T (15 and 50 µg), HeLa (H; 50 µg), and Jurkat (J; 50 µg) cells. *Antibodies:* Affinity purified rabbit anti-PSMD4 antibody A303-856A (lot A303-856A-1) used for WB at 0.1 µg/ml. *Detection:* Chemiluminescence with an exposure time of 10 seconds.



Detection of human PSMD4 by western blot of immunoprecipitates. *Samples:* Whole cell lysate (1 mg for IP; 20% of IP loaded) from HEK293T cells. *Antibodies:* Affinity purified rabbit anti-PSMD4 antibody A303-856A (lot A303-856A-1) used for IP at 6 µg/mg lysate. PSMD4 was also immunoprecipitated by rabbit anti-PSMD4 antibody A303-855A. For blotting immunoprecipitated PSMD4, A303-856A was used at 1 µg/ml. *Detection:* Chemiluminescence with an exposure time of 3 seconds.



Detection of human PSMD4 by immunohistochemistry. *Samples:* FFPE sections of human lung carcinoma. *Antibody:* Affinity purified rabbit anti-PSMD4 Cat. No. A303-855A Lot1 used at a dilution of 1:5,000 (0.2 µg/ml) (left) and Cat. No. A303-865A Lot1 used at a dilution of 1:5,000 (0.2 µg/ml) (right). *Detection:* DAB