

PSMA1 Antibody

Rabbit Polyclonal

Antigen Affinity Purified

Protein ID NP_002777.1

Catalog No. A303-845A

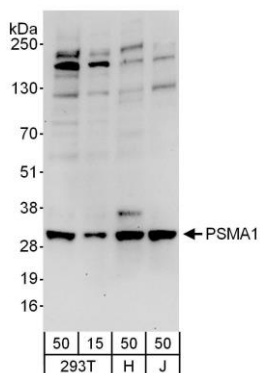
GeneID 5682

Lot No. A303-845A-1

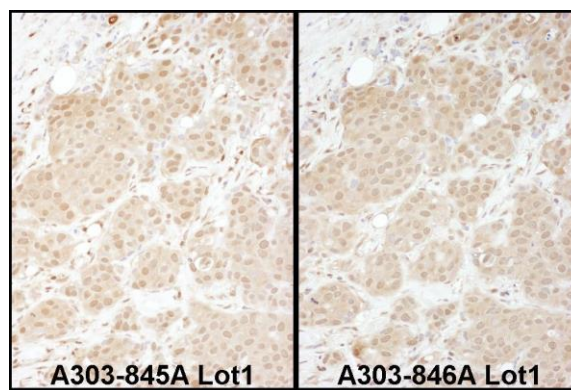


APPLICATIONS	WB, IHC						
SPECIES REACTIVITY	Human						
PRESUMED REACTIVITY	Based on 100% sequence identity, this antibody is predicted to react with Mouse, Rat, Chicken, Bovine and Orangutan						
AMOUNT	100 µl						
CONCENTRATION	1000 µg/ml						
STORAGE/SHELF LIFE	2 - 8° C / 1 year from date of receipt						
PHYSICAL STATE	Liquid						
BUFFER	Tris-citrate/phosphate buffer, pH 7 to 8 containing 0.09% Sodium Azide						
ISOTYPE	IgG						
ORIGIN	USA						
PRODUCTION PROCEDURES	<p>Antibody was affinity purified using an epitope specific to PSMA1 immobilized on solid support.</p> <p>The epitope recognized by A303-845A maps to a region between residue 163 and 213 of human Proteasome (Prosome, Macropain) Subunit, Alpha Type, 1 using the numbering given in entry NP_002777.1 (GeneID 5682).</p> <p>Antibody concentration was determined by extinction coefficient: absorbance at 280 nm of 1.4 equals 1.0 mg of IgG.</p>						
APPLICATIONS	<p>Centrifuge tube to remove product from lid. Optimal working dilutions should be determined experimentally by the investigator. Prepare working dilution immediately before use.</p> <table><tr><td>Western Blot</td><td>1:2,000 - 1:10,000</td></tr><tr><td>Immunoprecipitation</td><td>Not recommended</td></tr><tr><td>Immunohistochemistry</td><td>1:500 - 1:2,000. Epitope retrieval with citrate buffer pH 6.0 is recommended for FFPE tissue sections.</td></tr></table>	Western Blot	1:2,000 - 1:10,000	Immunoprecipitation	Not recommended	Immunohistochemistry	1:500 - 1:2,000. Epitope retrieval with citrate buffer pH 6.0 is recommended for FFPE tissue sections.
Western Blot	1:2,000 - 1:10,000						
Immunoprecipitation	Not recommended						
Immunohistochemistry	1:500 - 1:2,000. Epitope retrieval with citrate buffer pH 6.0 is recommended for FFPE tissue sections.						
APPLICATION NOTES	Western blot of lysates performed using standard western blot reagents and 4-20% SDS-PAGE.						
IHC HUMAN CONTROLS	Breast Carcinoma, Ovarian Carcinoma						
ADDITIONAL INFO	<p>https://www.bethyl.com/product/A303-845A</p> <p>Use the link above to view SDS, a current list of citations, and other product specific information.</p>						

This document certifies that this product has met all of the quality control standards defined by Bethyl Laboratories, Inc.
Eric McIntush, PhD | Chief Scientific Officer Date: June 21, 2019



Detection of human PSMA1 by western blot. *Samples:* Whole cell lysate from HEK293T (15 and 50 µg), HeLa (H; 50 µg), and Jurkat (J; 50 µg) cells. *Antibodies:* Affinity purified rabbit anti-PSMA1 antibody A303-845A (lot A303-845A-1) used for WB at 0.1 µg/ml. *Detection:* Chemiluminescence with an exposure time of 30 seconds.



Detection of human PSMA1 by immunohistochemistry. *Samples:* FFPE serial sections of human breast carcinoma. *Antibody:* Affinity purified rabbit anti-PSMA1 (Cat. No. A303-845A Lot1, left image and Cat. No. A303-846A Lot1, right image) used at a dilution of 1:1,000 (1 µg/ml). *Detection:* DAB. *Counterstain:* hematoxylin (blue).