

# RPS3 Antibody

Rabbit Polyclonal

Antigen Affinity Purified

Protein ID NP\_000996.2

Catalog No. A303-840A

GeneID 6188

Lot No. A303-840A-2



|                              |   |
|------------------------------|---|
| <b>APPLICATIONS</b>          | WB, IP, IHC   |
| <b>SPECIES REACTIVITY</b>    | Human   |
| <b>PRESUMED REACTIVITY</b>   | Based on 100% sequence identity, this antibody is predicted to react with Mouse, Rat, X. laevis, Bovine, Dog, Pig and Orangutan |
| <b>AMOUNT</b>                | 100 µl  |
| <b>CONCENTRATION</b>         | 1000 µg/ml  |
| <b>STORAGE/SHELF LIFE</b>    | 2 – 8° C / 1 year from date of receipt  |
| <b>PHYSICAL STATE</b>        | Liquid  |
| <b>BUFFER</b>                | Tris-citrate/phosphate buffer, pH 7 to 8 containing 0.09% Sodium Azide  |
| <b>ISOTYPE</b>               | IgG   |
| <b>ORIGIN</b>                | USA   |
| <b>PRODUCTION PROCEDURES</b> | Antibody was affinity purified using an epitope specific to RPS3 immobilized on solid support.                                  |

The epitope recognized by A303-840A maps to a region between residue 1 and 50 of human Ribosomal Protein S3 using the numbering given in entry NP\_000996.2 (GeneID 6188).

Antibody concentration was determined by extinction coefficient: absorbance at 280 nm of 1.4 equals 1.0 mg of IgG.

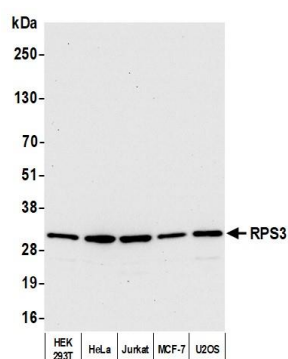
**APPLICATIONS** Centrifuge tube to remove product from lid. Optimal working dilutions should be determined experimentally by the investigator. Prepare working dilution immediately before use.

|                      |  |
|----------------------|--|
| Western Blot         | 1:10,000 – 1:25,000  |
| Immunoprecipitation  | 2 – 10 µg/mg lysate  |
| Immunohistochemistry | 1:500 – 1:2,000. Epitope retrieval with citrate buffer pH 6.0 is recommended for FFPE tissue sections. |

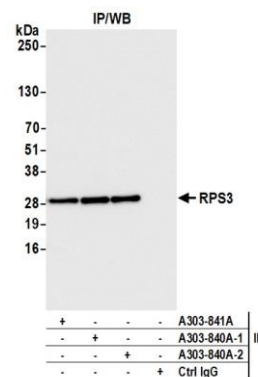
**IHC HUMAN CONTROLS** Breast Carcinoma, Colon Carcinoma, Ovarian Carcinoma

**ADDITIONAL INFO** <https://www.bethyl.com/product/A303-840A>  
Use the link above to view SDS, a current list of citations, and other product specific information.  
IP-western blot protocol: [https://www.bethyl.com/content/protocol\\_IP\\_WB](https://www.bethyl.com/content/protocol_IP_WB)

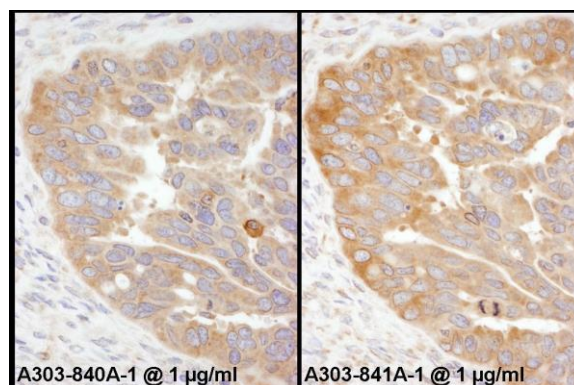
This document certifies that this product has met all of the quality control standards defined by Bethyl Laboratories, Inc.  
Brian McWilliams, PhD Date: August 20, 2021



**Detection of human RPS3 by western blot.** *Samples:* Whole cell lysate (10  $\mu$ g) from HEK293T, HeLa, Jurkat, MCF-7, and U2OS cells prepared using NETN lysis buffer. *Antibody:* Affinity purified rabbit anti-RPS3 antibody (A303-840A lot 2) used for WB at 0.04  $\mu$ g/ml. *Detection:* Chemiluminescence with an exposure time of 10 seconds.



**Detection of human RPS3 by western blot of immunoprecipitates.** *Samples:* Whole cell lysate (1.0 mg per IP reaction; 20% of IP loaded) from HeLa cells prepared using NETN lysis buffer. *Antibodies:* Affinity purified rabbit anti-RPS3 antibody (A303-840A lot 2) used for IP at 6  $\mu$ g per reaction. RPS3 was also immunoprecipitated by a previous lot of this antibody (A303-840A lot 1) and a second antibody against a different epitope of RPS3 (A303-841A). For blotting immunoprecipitated RPS3, A303-840A was used at 0.1  $\mu$ g/ml. *Detection:* Chemiluminescence with an exposure time of 1 second.



**Detection of human RPS3 by immunohistochemistry.**

*Samples:* FFPE serial sections of human ovarian carcinoma. *Antibody:* Affinity purified rabbit anti-RPS3 (Cat. No. A303-840A Lot1, left panel and Cat. No. A303-841A Lot1, right panel) used at a dilution of 1:1,000 (1  $\mu$ g/ml). *Detection:* DAB