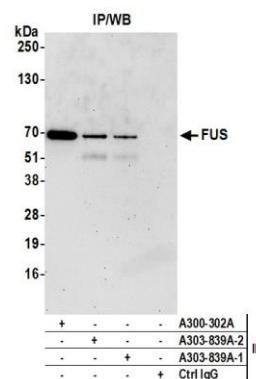


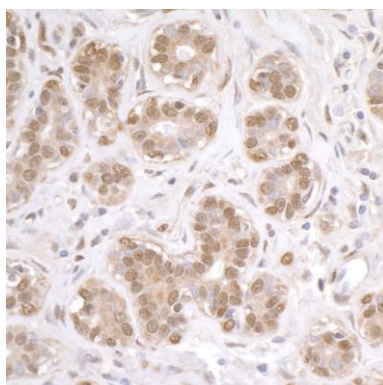
Detection of human and mouse FUS by western blot.

Samples: Whole cell lysate (50 µg) from HeLa, HEK293T, Jurkat, TCMK-1, and NIH 3T3 cells prepared using NETN lysis buffer. **Antibody:** Affinity purified goat anti-FUS antibody A303-839A (A303-839A Lot 2) used for WB at 0.1 µg/ml. **Detection:** Chemiluminescence with an exposure time of 30 seconds.



Detection of human FUS by western blot of immunoprecipitates.

Samples: Whole cell lysate (1.0 mg per IP reaction; 20% of IP loaded) from HeLa cells prepared using NETN lysis buffer. **Antibodies:** Affinity purified goat anti-FUS antibody A303-839A (A303-839A Lot 2) used for IP at 6 µg per reaction. FUS was also immunoprecipitated by a previous lot of this antibody (lot A303-839A-1) and rabbit anti-FUS antibody A300-302A. For blotting immunoprecipitated FUS, A303-839A-2 was used at 0.1 µg/ml. **Detection:** Chemiluminescence with an exposure time of 75 seconds.



Detection of human FUS by immunohistochemistry.

Sample: FFPE section of human breast carcinoma. **Antibody:** Affinity purified goat anti-FUS (Cat. No. A303-839A lot 2) used at a dilution of 1:1,000 (1 µg/ml). **Detection:** DAB