

KAP-1 Antibody

Goat Polyclonal

Antigen Affinity Purified

Protein ID NP_005753.1

Catalog No. A303-838A

GeneID 10155

Lot No. A303-838A-1



| | |
|------------------------------|---|
| APPLICATIONS | WB, IP, IHC |
| SPECIES REACTIVITY | Human |
| AMOUNT | 100 µl |
| CONCENTRATION | 1000 µg/ml |
| STORAGE/SHELF LIFE | 2 - 8° C / 1 year from date of receipt |
| PHYSICAL STATE | Liquid |
| BUFFER | Tris-citrate/phosphate buffer, pH 7 to 8 containing 0.09% Sodium Azide |
| ISOTYPE | IgG |
| ORIGIN | USA |
| PRODUCTION PROCEDURES | Antibody was affinity purified using an epitope specific to KAP-1 immobilized on solid support. |

The epitope recognized by A303-838A maps to a region between residue 1 and 50 of human KRAB-Associated Protein 1 using the numbering given in entry NP_005753.1 (GeneID 10155).

Antibody concentration was determined by extinction coefficient: absorbance at 280 nm of 1.4 equals 1.0 mg of IgG.

APPLICATIONS Centrifuge tube to remove product from lid. Optimal working dilutions should be determined experimentally by the investigator. Prepare working dilution immediately before use.

Western Blot 1:2,000 - 1:10,000

Immunoprecipitation 2 - 10 µg/mg lysate

Immunohistochemistry 1:1,000 - 1:5,000. Epitope retrieval with citrate buffer pH 6.0 is recommended for FFPE tissue sections.

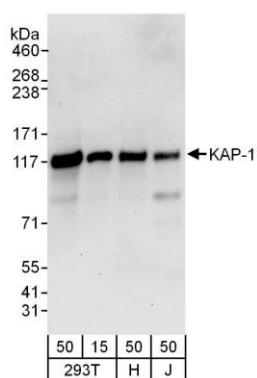
APPLICATION NOTES Western blot of lysates performed using standard western blot reagents and 4-8% SDS-PAGE.

IHC HUMAN CONTROLS Breast Carcinoma, Colon Carcinoma, Linitis Plastica Stomach Cancer, Ovarian Carcinoma, Prostate Carcinoma, Testicular Seminoma

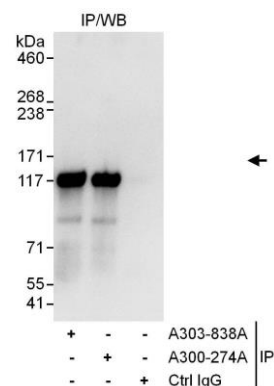
ADDITIONAL INFO <https://www.bethyl.com/product/A303-838A>

Use the link above to view SDS, a current list of citations, and other product specific information.

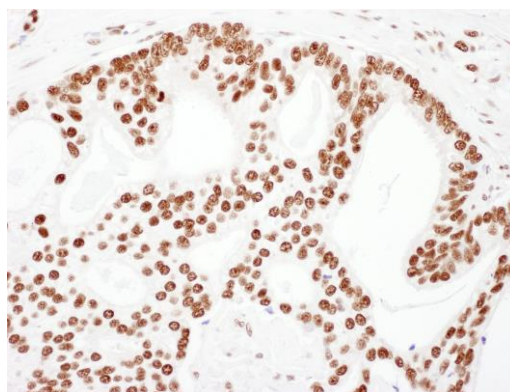
This document certifies that this product has met all of the quality control standards defined by Bethyl Laboratories, Inc.
Eric McIntush, PhD | Chief Scientific Officer Date: June 21, 2019



Detection of human KAP-1 by western blot. *Samples:* Whole cell lysate from HEK293T (15 and 50 μ g), HeLa (H; 50 μ g) and Jurkat (J; 50 μ g) cells. *Antibodies:* Affinity purified goat anti-KAP-1 antibody A303-838A (lot A303-838A-1) used for WB at 0.1 μ g/ml. *Detection:* Chemiluminescence with an exposure time of 30 seconds.



Detection of human KAP-1 by western blot of immunoprecipitates. *Samples:* Whole cell lysate (1 mg for IP; 20% of IP loaded) from HEK293T cells. *Antibodies:* Affinity purified goat anti-KAP-1 antibody A303-838A (lot A303-838A-1) used for IP at 6 μ g/mg lysate. KAP-1 was also immunoprecipitated by rabbit anti-KAP-1 antibody A300-274A. For blotting immunoprecipitated KAP-1, A303-838A was used at 1 μ g/ml. *Detection:* Chemiluminescence with an exposure time of 3 seconds.



Detection of human KAP-1 by immunohistochemistry.
Sample: FFPE section of human breast carcinoma.
Antibody: Affinity purified goat anti-KAP-1 (Cat. No. A303-838A lot 1) used at a dilution of 1:1,000 (1 μ g/ml).
Detection: DAB