

Lasu1/Ureb1 Antibody

Goat Polyclonal

Antigen Affinity Purified

Protein ID NP_113584.3

Catalog No. A303-836A

GeneID 10075

Lot No. A303-836A-1



APPLICATIONS	WB
SPECIES REACTIVITY	Human
AMOUNT	100 µl
CONCENTRATION	1000 µg/ml
STORAGE/SHELF LIFE	2 - 8° C / 1 year from date of receipt
PHYSICAL STATE	Liquid
BUFFER	Tris-citrate/phosphate buffer, pH 7 to 8 containing 0.09% Sodium Azide
ISOTYPE	IgG
ORIGIN	USA
PRODUCTION PROCEDURES	Antibody was affinity purified using an epitope specific to Lasu1/Ureb1 immobilized on solid support.

The epitope recognized by A303-836A maps to a region between residue 2250 and 2300 of human HECT domain protein LASU1/Upstream Regulatory Element Binding Protein 1 using the numbering given in entry NP_113584.3 (GeneID 10075).

Antibody concentration was determined by extinction coefficient: absorbance at 280 nm of 1.4 equals 1.0 mg of IgG.

APPLICATIONS Centrifuge tube to remove product from lid. Optimal working dilutions should be determined experimentally by the investigator. Prepare working dilution immediately before use.

Western Blot 1:500 - 1:2,500

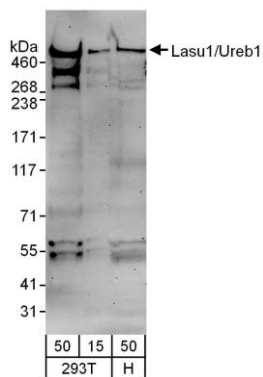
Immunoprecipitation Not recommended

APPLICATION NOTES Western blot of lysates performed using standard western blot reagents and 3-8% SDS-PAGE.

ADDITIONAL INFO <https://www.bethyl.com/product/A303-836A>

Use the link above to view SDS, a current list of citations, and other product specific information.

This document certifies that this product has met all of the quality control standards defined by Bethyl Laboratories, Inc.
Eric McIntush, PhD | Chief Scientific Officer Date: June 21, 2019

**Detection of human Lasu1/Ureb1 by western blot.**

Samples: Whole cell lysate from HEK293T (15 and 50 µg) and HeLa (H; 50 µg) cells. *Antibodies:* Affinity purified goat anti-Lasu1/Ureb1 antibody A303-836A (lot A303-836A-1) used for WB at 1 µg/ml. *Detection:* Chemiluminescence with an exposure time of 3 minutes.