

# RNA Polymerase II Antibody

Goat Polyclonal

Antigen Affinity Purified

Protein ID NP\_000928.1

Catalog No. A303-835A

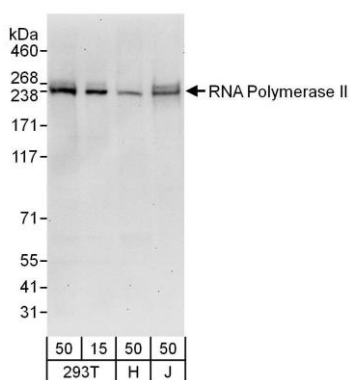
GeneID 5430

Lot No. A303-835A-1

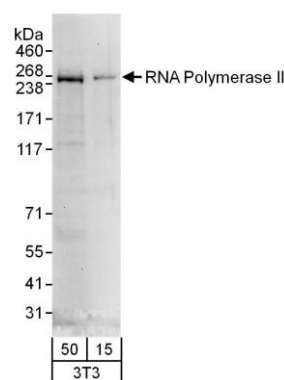


<b>APPLICATIONS</b>	WB, IP				
<b>SPECIES REACTIVITY</b>	Human, Mouse				
<b>AMOUNT</b>	100 µl				
<b>CONCENTRATION</b>	1000 µg/ml				
<b>STORAGE/SHELF LIFE</b>	2 - 8° C / 1 year from date of receipt				
<b>PHYSICAL STATE</b>	Liquid				
<b>BUFFER</b>	Tris-citrate/phosphate buffer, pH 7 to 8 containing 0.09% Sodium Azide				
<b>ORIGIN</b>	USA				
<b>PRODUCTION PROCEDURES</b>	<p>Antibody was affinity purified using an epitope specific to RNA Polymerase II immobilized on solid support.</p> <p>The epitope recognized by A303-835A maps to a region within the C-terminal repeat of human RNA Polymerase II using the reference sequence NP_000928.1 (GeneID 5430).</p> <p>Antibody concentration was determined by extinction coefficient: absorbance at 280 nm of 1.4 equals 1.0 mg of IgG.</p>				
<b>APPLICATIONS</b>	<p>Centrifuge tube to remove product from lid. Optimal working dilutions should be determined experimentally by the investigator. Prepare working dilution immediately before use.</p> <table><tr><td>Western Blot</td><td>1:1,000 - 1:5,000</td></tr><tr><td>Immunoprecipitation</td><td>2 - 10 µg/mg lysate</td></tr></table>	Western Blot	1:1,000 - 1:5,000	Immunoprecipitation	2 - 10 µg/mg lysate
Western Blot	1:1,000 - 1:5,000				
Immunoprecipitation	2 - 10 µg/mg lysate				
<b>APPLICATION NOTES</b>	Western blot of lysates performed using standard western blot reagents and 4-8% SDS-PAGE.				
<b>ADDITIONAL INFO</b>	<p><a href="https://www.bethyl.com/product/A303-835A">https://www.bethyl.com/product/A303-835A</a></p> <p>Use the link above to view SDS, a current list of citations, and other product specific information.</p>				

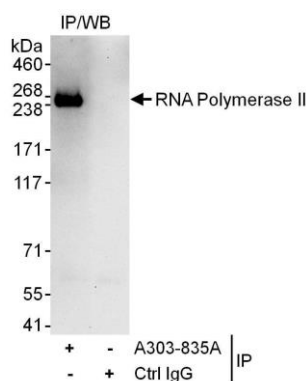
This document certifies that this product has met all of the quality control standards defined by Bethyl Laboratories, Inc.  
Eric McIntush, PhD | Chief Scientific Officer Date: June 21, 2019



**Detection of human RNA Polymerase II by western blot.**  
*Samples:* Whole cell lysate from HEK293T (15 and 50 µg), HeLa (H; 50 µg), and Jurkat (J; 50 µg) cells. *Antibodies:* Affinity purified goat anti-RNA Polymerase II antibody A303-835A (lot A303-835A-1) used for WB at 0.4 µg/ml. *Detection:* Chemiluminescence with an exposure time of 30 seconds.



**Detection of mouse RNA Polymerase II by western blot.**  
*Samples:* Whole cell lysate (15 and 50 µg) from NIH 3T3 cells. *Antibodies:* Affinity purified goat anti-RNA Polymerase II antibody A303-835A (lot A303-835A-1) used for WB at 1 µg/ml. *Detection:* Chemiluminescence with an exposure time of 30 seconds.



**Detection of human RNA Polymerase II by western blot of immunoprecipitates.** *Samples:* Whole cell lysate (1 mg for IP; 20% of IP loaded) from HEK293T cells. *Antibodies:* Affinity purified goat anti-RNA Polymerase II antibody A303-835A (lot A303-835A-1) used for IP at 6 µg/mg lysate. For blotting immunoprecipitated RNA Polymerase II, A303-835A was used at 1 µg/ml. *Detection:* Chemiluminescence with an exposure time of 30 seconds.