

SMC1 Antibody

Goat Polyclonal

Antigen Affinity Purified

Protein ID NP_006297.2

Catalog No. A303-834A

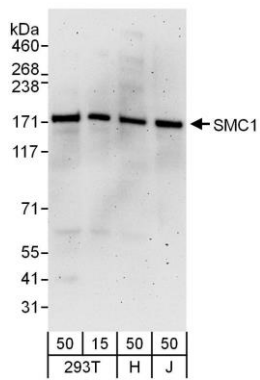
GeneID 8243

Lot No. A303-834A-1

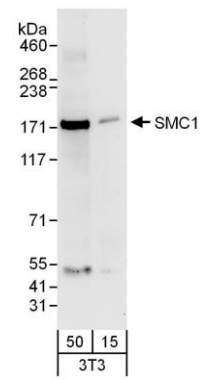


| | | | | | | | |
|------------------------------|---|--------------|--------------------|---------------------|---------------------|----------------------|--|
| APPLICATIONS | WB, IP, IHC | | | | | | |
| SPECIES REACTIVITY | Human, Mouse | | | | | | |
| PRESUMED REACTIVITY | Based on 100% sequence identity, this antibody is predicted to react with Rat and Bovine | | | | | | |
| AMOUNT | 100 µl | | | | | | |
| CONCENTRATION | 1000 µg/ml | | | | | | |
| STORAGE/SHELF LIFE | 2 - 8° C / 1 year from date of receipt | | | | | | |
| PHYSICAL STATE | Liquid | | | | | | |
| BUFFER | Tris-citrate/phosphate buffer, pH 7 to 8 containing 0.09% Sodium Azide | | | | | | |
| ISOTYPE | IgG | | | | | | |
| ORIGIN | USA | | | | | | |
| PRODUCTION PROCEDURES | <p>Antibody was affinity purified using an epitope specific to SMC1 immobilized on solid support.</p> <p>The epitope recognized by A303-834A maps to a region between residue 1183 and 1233 of human Structural Maintenance of Chromosomes 1 using the numbering given in entry NP_006297.2 (GeneID 8243).</p> <p>Antibody concentration was determined by extinction coefficient: absorbance at 280 nm of 1.4 equals 1.0 mg of IgG.</p> | | | | | | |
| APPLICATIONS | <p>Centrifuge tube to remove product from lid. Optimal working dilutions should be determined experimentally by the investigator. Prepare working dilution immediately before use.</p> <table><tr><td>Western Blot</td><td>1:2,000 - 1:10,000</td></tr><tr><td>Immunoprecipitation</td><td>2 - 10 µg/mg lysate</td></tr><tr><td>Immunohistochemistry</td><td>1:500 - 1:2,000. Epitope retrieval with citrate buffer pH 6.0 is recommended for FFPE tissue sections.</td></tr></table> | Western Blot | 1:2,000 - 1:10,000 | Immunoprecipitation | 2 - 10 µg/mg lysate | Immunohistochemistry | 1:500 - 1:2,000. Epitope retrieval with citrate buffer pH 6.0 is recommended for FFPE tissue sections. |
| Western Blot | 1:2,000 - 1:10,000 | | | | | | |
| Immunoprecipitation | 2 - 10 µg/mg lysate | | | | | | |
| Immunohistochemistry | 1:500 - 1:2,000. Epitope retrieval with citrate buffer pH 6.0 is recommended for FFPE tissue sections. | | | | | | |
| APPLICATION NOTES | Western blot of lysates performed using standard western blot reagents and 4-8% SDS-PAGE. | | | | | | |
| IHC HUMAN CONTROLS | Breast Carcinoma, Cervical Carcinoma, Linitis Plastica Stomach Cancer, Ovarian Carcinoma | | | | | | |
| IHC MOUSE CONTROLS | Renal Cell Carcinoma, Teratoma | | | | | | |
| ADDITIONAL INFO | <p>https://www.bethyl.com/product/A303-834A</p> <p>Use the link above to view SDS, a current list of citations, and other product specific information.</p> | | | | | | |

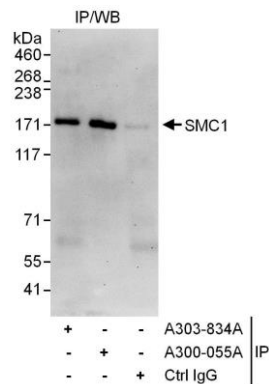
This document certifies that this product has met all of the quality control standards defined by Bethyl Laboratories, Inc.
Eric McIntush, PhD | Chief Scientific Officer Date: June 21, 2019



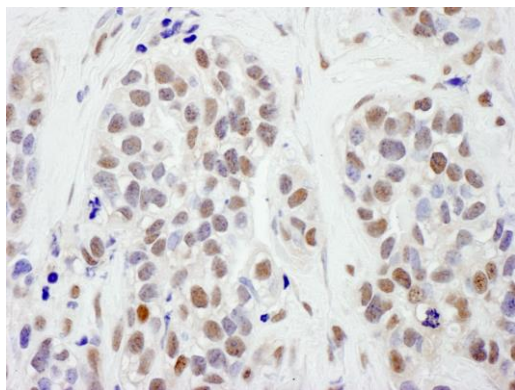
Detection of human SMC1 by western blot. *Samples:* Whole cell lysate from HEK293T (15 and 50 μ g), HeLa (H; 50 μ g), and Jurkat (J; 50 μ g) cells. *Antibodies:* Affinity purified goat anti-SMC1 antibody A303-834A (lot A303-834A-1) used for WB at 0.1 μ g/ml. *Detection:* Chemiluminescence with an exposure time of 3 minutes.



Detection of mouse SMC1 by western blot. *Samples:* Whole cell lysate (15 and 50 μ g) from NIH 3T3 cells. *Antibodies:* Affinity purified goat anti-SMC1 antibody A303-834A (lot A303-834A-1) used for WB at 0.4 μ g/ml. *Detection:* Chemiluminescence with an exposure time of 30 seconds.



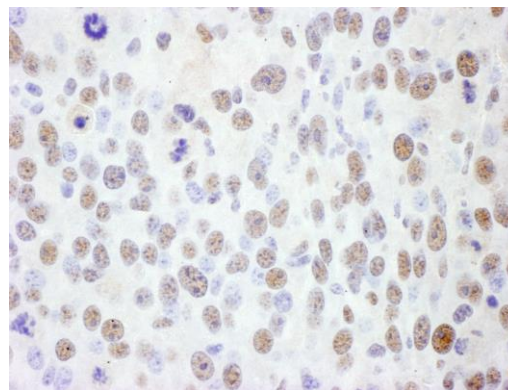
Detection of human SMC1 by western blot of immunoprecipitates. *Samples:* Whole cell lysate (1 mg for IP; 20% of IP loaded) from HeLa cells. *Antibodies:* Affinity purified goat anti-SMC1 antibody A303-834A (lot A303-834A-1) used for IP at 6 μ g/mg lysate. SMC1 was also immunoprecipitated by rabbit anti-SMC1 antibody A300-055A. For blotting immunoprecipitated SMC1, A303-834A was used at 1 μ g/ml. *Detection:* Chemiluminescence with an exposure time of 30 seconds.

**Detection of human SMC1 by immunohistochemistry.**

Sample: FFPE section of human breast carcinoma.

Antibody: Affinity purified goat anti- SMC1 (Cat. No. A303-834A Lot1) used at a dilution of 1:1,000 (1 µg/ml).

Detection: DAB

**Detection of mouse SMC1 by immunohistochemistry.**

Sample: FFPE section of mouse renal cell carcinoma.

Antibody: Affinity purified goat anti- SMC1 (Cat. No. A303-834A Lot1) used at a dilution of 1:1,000 (1 µg/ml).

Detection: DAB