

# PSMD12 Antibody

Rabbit Polyclonal

Antigen Affinity Purified

Catalog No. A303-829A

Lot No. A303-829A-1

Protein ID NP\_002807.1

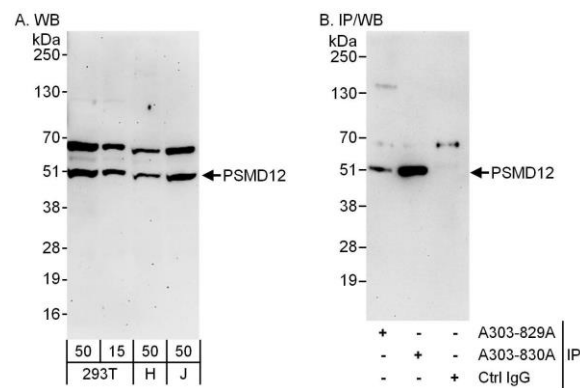
GeneID 5718



<b>APPLICATIONS</b>	WB				
<b>SPECIES REACTIVITY</b>	Human				
<b>PRESUMED REACTIVITY</b>	Based on 100% sequence identity, this antibody is predicted to react with Mouse, Bovine and Orangutan				
<b>AMOUNT</b>	100 µl				
<b>CONCENTRATION</b>	1000 µg/ml				
<b>STORAGE/SHELF LIFE</b>	2 – 8° C / 1 year from date of receipt				
<b>PHYSICAL STATE</b>	Liquid				
<b>BUFFER</b>	Tris-citrate/phosphate buffer, pH 7 to 8 containing 0.09% Sodium Azide				
<b>ISOTYPE</b>	IgG				
<b>ORIGIN</b>	USA				
<b>PRODUCTION PROCEDURES</b>	<p>Antibody was affinity purified using an epitope specific to PSMD12 immobilized on solid support.</p> <p>The epitope recognized by A303-829A maps to a region between residue 1 and 50 of human Proteasome (prosome, macropain) 26S subunit, non-ATPase, 12 using the numbering given in entry NP_002807.1 (GeneID 5718).</p> <p>Antibody concentration was determined by extinction coefficient: absorbance at 280 nm of 1.4 equals 1.0 mg of IgG.</p>				
<b>APPLICATIONS</b>	<p>Centrifuge tube to remove product from lid. Optimal working dilutions should be determined experimentally by the investigator. Prepare working dilution immediately before use.</p> <table><tr><td>Western Blot</td><td>1:1,000 – 1:5,000</td></tr><tr><td>Immunoprecipitation</td><td>Not recommended</td></tr></table>	Western Blot	1:1,000 – 1:5,000	Immunoprecipitation	Not recommended
Western Blot	1:1,000 – 1:5,000				
Immunoprecipitation	Not recommended				
<b>APPLICATION NOTES</b>	Western blot of lysates performed using standard western blot reagents and 4–20% SDS-PAGE.				
<b>ADDITIONAL INFO</b>	<p><a href="https://www.bethyl.com/product/A303-829A">https://www.bethyl.com/product/A303-829A</a></p> <p>Use the link above to view SDS, a current list of citations, and other product specific information.</p>				

This document certifies that this product has met all of the quality control standards defined by Bethyl Laboratories, Inc.  
Eric McIntush, PhD | Chief Scientific Officer

Date: June 21, 2019



**Detection of human PSMD12 by western blot and immunoprecipitation.** *Samples:* Whole cell lysate from HEK293T (15 and 50  $\mu$ g for WB; 1 mg for IP, 20% of IP loaded), HeLa (H; 50  $\mu$ g) and Jurkat (J; 50  $\mu$ g) cells. *Antibodies:* Affinity purified rabbit anti-PSMD12 antibody A303-829A used for WB at 0.4  $\mu$ g/ml (A) and 1  $\mu$ g/ml (B) and used for IP at 6  $\mu$ g/mg lysate. PSMD12 was more efficiently immunoprecipitated by rabbit anti-PSMD12 antibody A303-830A, which recognizes a downstream epitope. *Detection:* Chemiluminescence with exposure times of 3 minutes (A) and 30 seconds (B).