

PSMC1 Antibody

Rabbit Polyclonal

Antigen Affinity Purified

Protein ID NP_002793.2

Catalog No. A303-821A

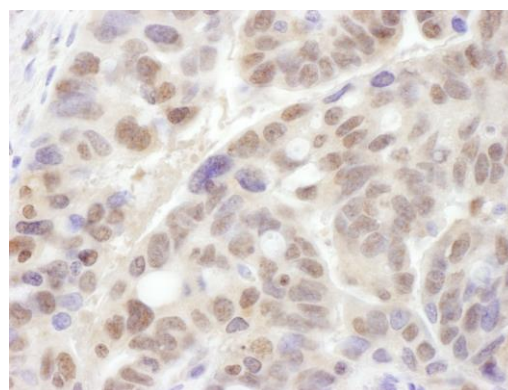
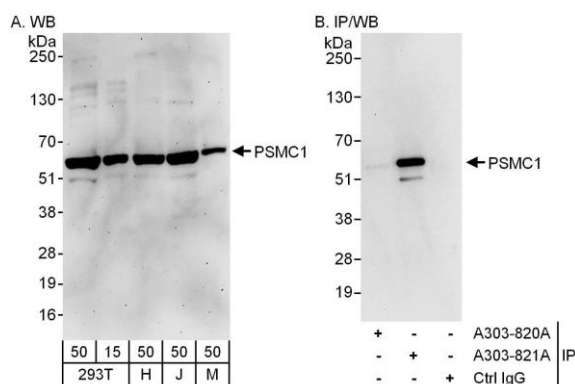
GeneID 5700

Lot No. A303-821A-1



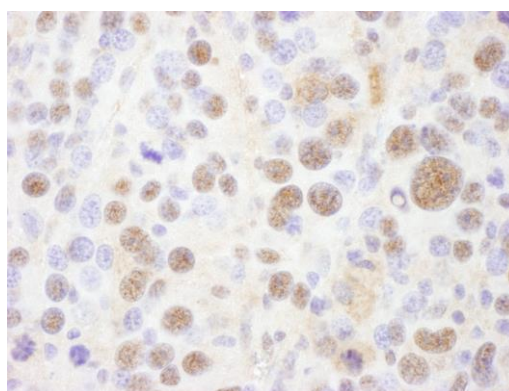
APPLICATIONS	WB, IP, IHC
SPECIES REACTIVITY	Human, Mouse
PRESUMED REACTIVITY	Based on 100% sequence identity, this antibody is predicted to react with Rat
AMOUNT	100 µl
CONCENTRATION	1000 µg/ml
STORAGE/SHELF LIFE	2 – 8° C / 1 year from date of receipt
PHYSICAL STATE	Liquid
BUFFER	Tris-citrate/phosphate buffer, pH 7 to 8 containing 0.09% Sodium Azide
ISOTYPE	IgG
ORIGIN	USA
PRODUCTION PROCEDURES	<p>Antibody was affinity purified using an epitope specific to PSMC1 immobilized on solid support.</p> <p>The epitope recognized by A303-821A maps to a region between residue 390 and 440 of human Proteasome (prosome, macropain) Subunit, ATPase, 1 using the numbering given in entry NP_002793.2 (GeneID 5700).</p> <p>Antibody concentration was determined by extinction coefficient: absorbance at 280 nm of 1.4 equals 1.0 mg of IgG.</p>
APPLICATIONS	<p>Centrifuge tube to remove product from lid. Optimal working dilutions should be determined experimentally by the investigator. Prepare working dilution immediately before use.</p> <p>Western Blot 1:2,000 – 1:10,000</p> <p>Immunoprecipitation 2 – 10 µg/mg lysate</p> <p>Immunohistochemistry 1:500 – 1:2,000. Epitope retrieval with citrate buffer pH 6.0 is recommended for FFPE tissue sections.</p>
APPLICATION NOTES	<p>Western blot of immunoprecipitates performed using Normal Pig Serum (Cat. No. S100-020), Goat anti-Rabbit Light Chain HRP Conjugate (Cat. No. A120-113P) and 4-20% SDS-PAGE (link to IP-western blot protocol in Additional Info section below).</p> <p>Western blot of lysates performed using standard western blot reagents and 4-20% SDS-PAGE.</p>
IHC HUMAN CONTROLS	Linitis Plastica Stomach Cancer, Osteosarcoma, Ovarian Carcinoma, Testicular Seminoma
IHC MOUSE CONTROLS	Hybridoma Tumor, Renal Cell Carcinoma, Teratoma
ADDITIONAL INFO	<p>https://www.bethyl.com/product/A303-821A</p> <p>Use the link above to view SDS, a current list of citations, and other product specific information.</p> <p>IP-western blot protocol: https://www.bethyl.com/content/protocol_IP_WB</p>

This document certifies that this product has met all of the quality control standards defined by Bethyl Laboratories, Inc.
Eric McIntush, PhD | Chief Scientific Officer Date: June 21, 2019



Detection of human and mouse PSMC1 by western blot (h and m) and immunoprecipitation (h). *Samples:* Whole cell lysate from HEK293T (15 and 50 µg for WB; 1 mg for IP, 20% of IP loaded), HeLa (H; 50 µg), Jurkat (J; 50 µg) and mouse NIH 3T3 (M; 50 µg) cells. *Antibodies:* Affinity purified rabbit anti-PSMC1 antibody A303-821A used for WB at 0.1 µg/ml (A) and 1 µg/ml (B) and used for IP at 6 µg/mg lysate. PSMC1 was not successfully immunoprecipitated by rabbit anti-PSMC1 antibody A303-820A, which recognizes an upstream epitope. *Detection:* Chemiluminescence with exposure times of 3 minutes (A) and 10 seconds (B).

Detection of human PSMC1 by immunohistochemistry. *Sample:* FFPE section of human ovarian carcinoma. *Antibody:* Affinity purified rabbit anti- PSMC1 (Cat. No. A303-821A Lot1) used at a dilution of 1:1,000 (1 µg/ml). *Detection:* DAB



Detection of mouse PSMC1 by immunohistochemistry. *Sample:* FFPE section of mouse renal cell carcinoma. *Antibody:* Affinity purified rabbit anti- PSMC1 (Cat. No. A303-821A Lot1) used at a dilution of 1:1,000 (1 µg/ml). *Detection:* DAB