

# PSMA2 Antibody

Rabbit Polyclonal

Antigen Affinity Purified

Protein ID NP\_002778.1

Catalog No. A303-816A

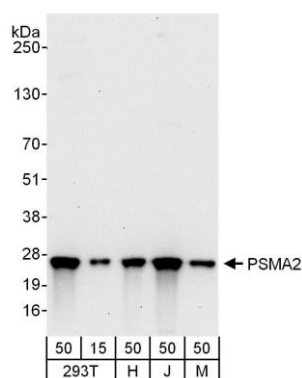
GeneID 5683

Lot No. A303-816A-1



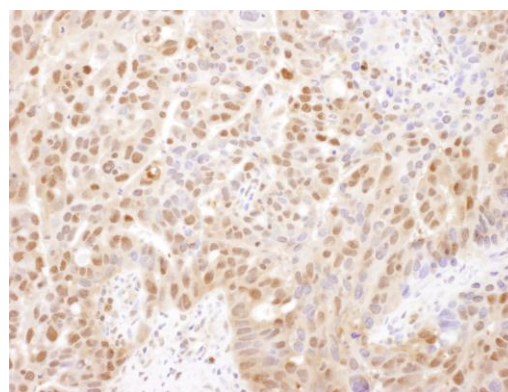
<b>APPLICATIONS</b>	WB, IHC						
<b>SPECIES REACTIVITY</b>	Human, Mouse						
<b>PRESUMED REACTIVITY</b>	Based on 100% sequence identity, this antibody is predicted to react with Bovine						
<b>AMOUNT</b>	100 µl						
<b>CONCENTRATION</b>	1000 µg/ml						
<b>STORAGE/SHELF LIFE</b>	2 - 8° C / 1 year from date of receipt						
<b>PHYSICAL STATE</b>	Liquid						
<b>BUFFER</b>	Tris-citrate/phosphate buffer, pH 7 to 8 containing 0.09% Sodium Azide						
<b>ISOTYPE</b>	IgG						
<b>ORIGIN</b>	USA						
<b>PRODUCTION PROCEDURES</b>	<p>Antibody was affinity purified using an epitope specific to PSMA2 immobilized on solid support.</p> <p>The epitope recognized by A303-816A maps to a region between residue 184 and 234 of human Proteasome (prosome, macropain) Subunit, Alpha type, 2 using the numbering given in entry NP_002778.1 (GeneID 5683).</p> <p>Antibody concentration was determined by extinction coefficient: absorbance at 280 nm of 1.4 equals 1.0 mg of IgG.</p>						
<b>APPLICATIONS</b>	<p>Centrifuge tube to remove product from lid. Optimal working dilutions should be determined experimentally by the investigator. Prepare working dilution immediately before use.</p> <table><tr><td>Western Blot</td><td>1:2,000 - 1:10,000</td></tr><tr><td>Immunoprecipitation</td><td>Not recommended</td></tr><tr><td>Immunohistochemistry</td><td>1:500 - 1:2,000. Epitope retrieval with citrate buffer pH 6.0 is recommended for FFPE tissue sections.</td></tr></table>	Western Blot	1:2,000 - 1:10,000	Immunoprecipitation	Not recommended	Immunohistochemistry	1:500 - 1:2,000. Epitope retrieval with citrate buffer pH 6.0 is recommended for FFPE tissue sections.
Western Blot	1:2,000 - 1:10,000						
Immunoprecipitation	Not recommended						
Immunohistochemistry	1:500 - 1:2,000. Epitope retrieval with citrate buffer pH 6.0 is recommended for FFPE tissue sections.						
<b>APPLICATION NOTES</b>	Western blot of lysates performed using standard western blot reagents and 4-20% SDS-PAGE.						
<b>IHC HUMAN CONTROLS</b>	Colon Carcinoma, Osteosarcoma, Ovarian Carcinoma						
<b>IHC MOUSE CONTROLS</b>	Renal Cell Carcinoma						
<b>ADDITIONAL INFO</b>	<p><a href="https://www.bethyl.com/product/A303-816A">https://www.bethyl.com/product/A303-816A</a></p> <p>Use the link above to view SDS, a current list of citations, and other product specific information.</p>						

This document certifies that this product has met all of the quality control standards defined by Bethyl Laboratories, Inc.  
Eric McIntush, PhD | Chief Scientific Officer Date: June 21, 2019



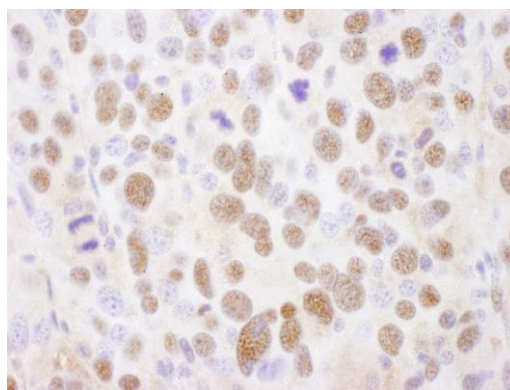
**Detection of human and mouse PSMA2 by western blot.**

*Samples:* Whole cell lysate from HEK293T (15 and 50 µg), HeLa (H; 50 µg), Jurkat (J; 50 µg) and mouse NIH 3T3 (M; 50 µg) cells. *Antibodies:* Affinity purified rabbit anti-PSMA2 antibody A303-816A used for WB at 0.1 µg/ml. *Detection:* Chemiluminescence with an exposure time of 30 seconds.



**Detection of human PSMA2 by immunohistochemistry.**

*Sample:* FFPE section of human ovarian carcinoma. *Antibody:* Affinity purified rabbit anti-PSMA2 (Cat. No. A303-816A Lot1) used at a dilution of 1:1,000 (1 µg/ml). *Detection:* DAB



**Detection of mouse PSMA2 by immunohistochemistry.**

*Sample:* FFPE section of mouse renal cell carcinoma. *Antibody:* Affinity purified rabbit anti-PSMA2 (Cat. No. A303-816A Lot1) used at a dilution of 1:1,000 (1 µg/ml). *Detection:* DAB