

PPP2R5C Antibody

Rabbit Polyclonal

Antigen Affinity Purified

Protein ID NP_002710.2

Catalog No. A303-814A

GeneID 5527

Lot No. A303-814A-1



APPLICATIONS	WB, IP, IHC
SPECIES REACTIVITY	Human
AMOUNT	100 µl
CONCENTRATION	1000 µg/ml
STORAGE/SHELF LIFE	2 – 8° C / 1 year from date of receipt
PHYSICAL STATE	Liquid
BUFFER	Tris-citrate/phosphate buffer, pH 7 to 8 containing 0.09% Sodium Azide
ISOTYPE	IgG
ORIGIN	USA
PRODUCTION PROCEDURES	Antibody was affinity purified using an epitope specific to PPP2R5C immobilized on solid support.

The epitope recognized by A303-814A maps to a region between residue 490 and 524 of human Protein Phosphatase 2, Regulatory Subunit B', Gamma using the numbering given in entry NP_002710.2 (GeneID 5527).

Antibody concentration was determined by extinction coefficient: absorbance at 280 nm of 1.4 equals 1.0 mg of IgG.

APPLICATIONS Centrifuge tube to remove product from lid. Optimal working dilutions should be determined experimentally by the investigator. Prepare working dilution immediately before use.

Western Blot 1:1,000 – 1:5,000

Immunoprecipitation 2 – 10 µg/mg lysate

Immunohistochemistry 1:500 – 1:2,000. Epitope retrieval with citrate buffer pH 6.0 is recommended for FFPE tissue sections.

APPLICATION NOTES Western blot of immunoprecipitates performed using Normal Pig Serum (Cat. No. S100-020), Goat anti-Rabbit Light Chain HRP Conjugate (Cat. No. A120-113P) and 4-20% SDS-PAGE (link to IP-western blot protocol in Additional Info section below).

Western blot of lysates performed using standard western blot reagents and 4-20% SDS-PAGE.
IHC HUMAN CONTROLS Breast Carcinoma

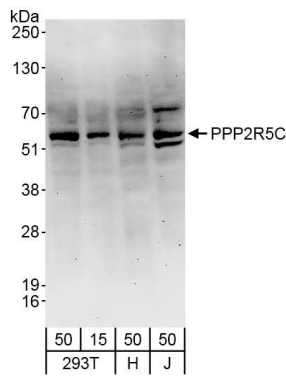
ADDITIONAL INFO

<https://www.bethyl.com/product/A303-814A>

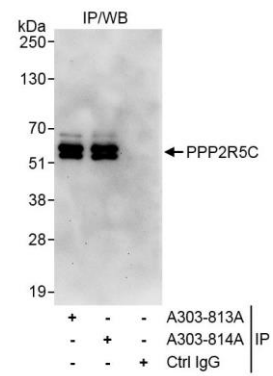
Use the link above to view SDS, a current list of citations, and other product specific information.

IP-western blot protocol https://www.bethyl.com/content/protocol_IP_WB

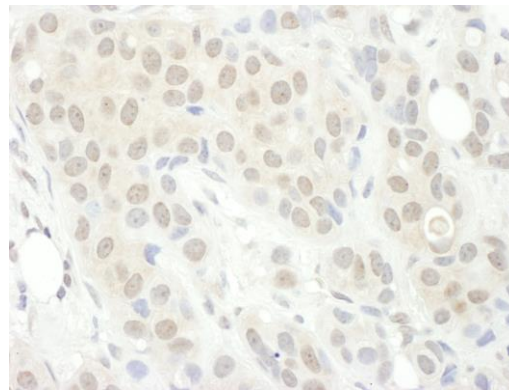
This document certifies that this product has met all of the quality control standards defined by Bethyl Laboratories, Inc.
Eric McIntush, PhD | Chief Scientific Officer Date: November 12, 2019



Detection of human PPP2R5C by western blot. *Samples:* Whole cell lysate from HEK293T (15 and 50 µg), HeLa (H; 50 µg) and Jurkat (J; 50 µg) cells. *Antibody:* Affinity purified rabbit anti-PPP2R5C antibody A303-814A (lot A303-814A-1) used at 0.04 µg/ml. *Detection:* Chemiluminescence with an exposure time of 3 minutes.



Detection of human PPP2R5C by western blot of immunoprecipitates. *Samples:* Whole cell lysate (1 mg for IP, 20% of IP loaded) from HEK293T cells. *Antibodies:* Affinity purified rabbit anti-PPP2R5C antibody A303-814A (lot A303-814A-1) used for IP at 6 µg/mg lysate. PPP2R5C was also immunoprecipitated by rabbit anti-PPP2R5C antibody A303-813A, which recognizes an upstream epitope. For blotting immunoprecipitated PPP2R5C, A303-814A was used at 1.0 µg/ml. *Detection:* Chemiluminescence with exposure time of 30 seconds.



Detection of human PPP2R5C by immunohistochemistry. *Sample:* FFPE section of human breast carcinoma. *Antibody:* Affinity purified rabbit anti-PPP2R5C (Cat. No. A303-814A Lot1) used at a dilution of 1:1,000 (1 µg/ml). *Detection:* DAB. *Counterstain:* Hematoxylin (blue).