

SOD1 Antibody

Rabbit Polyclonal

Antigen Affinity Purified

Protein ID NP_000445.1

Catalog No. A303-812A

GeneID 6647

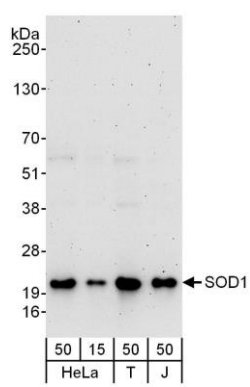
Lot No. A303-812A-1



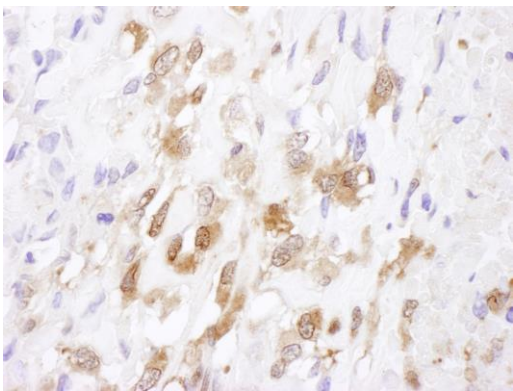
APPLICATIONS	WB, IHC						
SPECIES REACTIVITY	Human						
PRESUMED REACTIVITY	Based on 100% sequence identity, this antibody is predicted to react with Mouse, Rat, Dog, Guinea pig_10141 and Chimpanzee						
AMOUNT	100 µl						
CONCENTRATION	1000 µg/ml						
STORAGE/SHELF LIFE	2 – 8° C / 1 year from date of receipt						
PHYSICAL STATE	Liquid						
BUFFER	Tris-citrate/phosphate buffer, pH 7 to 8 containing 0.09% Sodium Azide						
ISOTYPE	IgG						
ORIGIN	USA						
PRODUCTION PROCEDURES	<p>Antibody was affinity purified using an epitope specific to SOD1 immobilized on solid support.</p> <p>The epitope recognized by A303-812A maps to a region between residue 104 and 154 of human Superoxide Dismutase 1 using the numbering given in entry NP_000445.1 (GeneID 6647).</p> <p>Antibody concentration was determined by extinction coefficient: absorbance at 280 nm of 1.4 equals 1.0 mg of IgG.</p>						
APPLICATIONS	<p>Centrifuge tube to remove product from lid. Optimal working dilutions should be determined experimentally by the investigator. Prepare working dilution immediately before use.</p> <table><tr><td>Western Blot</td><td>1:2,000 – 1:10,000</td></tr><tr><td>Immunoprecipitation</td><td>Not recommended</td></tr><tr><td>Immunohistochemistry</td><td>1:500 – 1:2,000. Epitope retrieval with citrate buffer pH 6.0 is recommended for FFPE tissue sections.</td></tr></table>	Western Blot	1:2,000 – 1:10,000	Immunoprecipitation	Not recommended	Immunohistochemistry	1:500 – 1:2,000. Epitope retrieval with citrate buffer pH 6.0 is recommended for FFPE tissue sections.
Western Blot	1:2,000 – 1:10,000						
Immunoprecipitation	Not recommended						
Immunohistochemistry	1:500 – 1:2,000. Epitope retrieval with citrate buffer pH 6.0 is recommended for FFPE tissue sections.						
APPLICATION NOTES	Western blot of lysates performed using standard western blot reagents and 4–12% SDS-PAGE.						
IHC HUMAN CONTROLS	Breast Carcinoma, Osteosarcoma, Ovarian Carcinoma						
ADDITIONAL INFO	<p>https://www.bethyl.com/product/A303-812A</p> <p>Use the link above to view SDS, a current list of citations, and other product specific information.</p>						

This document certifies that this product has met all of the quality control standards defined by Bethyl Laboratories, Inc.
Eric McIntush, PhD | Chief Scientific Officer

Date: June 21, 2019



Detection of human SOD1 by western blot. *Samples:* Whole cell lysate from HeLa (15 and 50 µg), HEK293T (T; 50 µg) and Jurkat (J; 50 µg) cells. *Antibodies:* Affinity purified rabbit anti-SOD1 antibody A303-812A used for WB at 0.1 µg/ml. *Detection:* Chemiluminescence with an exposure time of 3 minutes.



Detection of human SOD1 by immunohistochemistry. *Sample:* FFPE section of human osteosarcoma. *Antibody:* Affinity purified rabbit anti-SOD1 (Cat. No. A303-812A Lot1) used at a dilution of 1:1,000 (1 µg/ml). *Detection:* DAB