

BCKDHA Antibody

Rabbit Polyclonal

Antigen Affinity Purified

Protein ID NP_000700.1

Catalog No. A303-790A

GeneID 593

Lot No. A303-790A-2



APPLICATIONS	WB, IP
SPECIES REACTIVITY	Human
PRESUMED REACTIVITY	Based on 100% sequence identity, this antibody is predicted to react with Rat and Chimpanzee
AMOUNT	100 µl
CONCENTRATION	1000 µg/ml
STORAGE/SHELF LIFE	2 – 8° C / 1 year from date of receipt
PHYSICAL STATE	Liquid
BUFFER	Tris-citrate/phosphate buffer, pH 7 to 8 containing 0.09% Sodium Azide
ISOTYPE	IgG
ORIGIN	USA
PRODUCTION PROCEDURES	Antibody was affinity purified using an epitope specific to BCKDHA immobilized on solid support.

The epitope recognized by A303-790A maps to a region between residue 395 and 445 of human Branched chain keto acid dehydrogenase E1, alpha polypeptide using the numbering given in entry NP_000700.1 (GeneID 593).

Antibody concentration was determined by extinction coefficient: absorbance at 280 nm of 1.4 equals 1.0 mg of IgG.

APPLICATIONS Centrifuge tube to remove product from lid. Optimal working dilutions should be determined experimentally by the investigator. Prepare working dilution immediately before use.

Western Blot 1:10,000 – 1:25,000

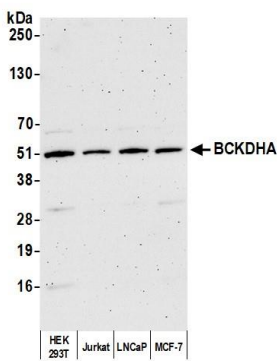
Immunoprecipitation 2 – 10 µg/mg lysate

ADDITIONAL INFO <https://www.bethyl.com/product/A303-790A>

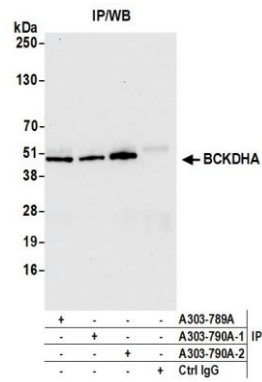
Use the link above to view SDS, a current list of citations, and other product specific information.

IP-western blot protocol: https://www.bethyl.com/content/protocol_IP_WB

This document certifies that this product has met all of the quality control standards defined by Bethyl Laboratories, Inc.
Eric McIntush, PhD | Chief Scientific Officer Date: October 15, 2020



Detection of human BCKDHA by western blot. *Samples:* Whole cell lysate (10 µg) from HEK293T, Jurkat, LNCaP, and MCF-7 cells prepared using NETN lysis buffer. *Antibody:* Affinity purified rabbit anti-BCKDHA antibody A303-790A (lot A303-790A-2) used for WB at 0.04 µg/ml. *Detection:* Chemiluminescence with an exposure time of 3 minutes.



Detection of human BCKDHA by western blot of immunoprecipitates. *Samples:* Whole cell lysate (1.0 mg per IP reaction; 20% of IP loaded) from HEK293T cells prepared using NETN lysis buffer. *Antibodies:* Affinity purified rabbit anti-BCKDHA antibody A303-790A (lot A303-790A-2) used for IP at 6 µg per reaction. BCKDHA was also immunoprecipitated by a previous lot of this antibody (lot A303-790A-1) and rabbit anti-BCKDHA antibody A303-789A. For blotting immunoprecipitated BCKDHA, A303-790A was used at 0.04 µg/ml. *Detection:* Chemiluminescence with an exposure time of 10 seconds.