

SRSF7 Antibody

Rabbit Polyclonal

Antigen Affinity Purified

Protein ID NP_001026854.1

Catalog No. A303-773A

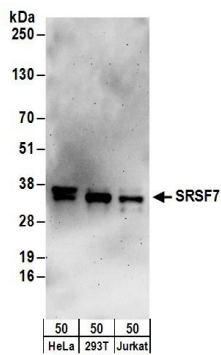
GeneID 6432

Lot No. A303-773A-2

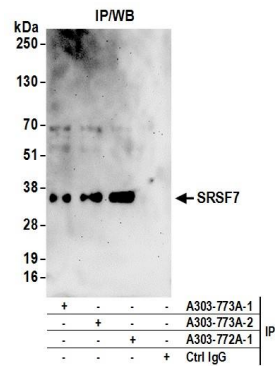


APPLICATIONS	WB, IP, IHC
SPECIES REACTIVITY	Human, Mouse
AMOUNT	100 µl
CONCENTRATION	1000 µg/ml
STORAGE/SHELF LIFE	2 – 8° C / 1 year from date of receipt
PHYSICAL STATE	Liquid
BUFFER	Tris-citrate/phosphate buffer, pH 7 to 8 containing 0.09% Sodium Azide
ISOTYPE	IgG
ORIGIN	USA
PRODUCTION PROCEDURES	<p>Antibody was affinity purified using an epitope specific to SRSF7 immobilized on solid support.</p> <p>The epitope recognized by A303-773A maps to a region between residue 188 and 238 of human Serine/Arginine-Rich Splicing Factor 7 using the numbering given in entry NP_001026854.1 (GeneID 6432).</p> <p>Antibody concentration was determined by extinction coefficient: absorbance at 280 nm of 1.4 equals 1.0 mg of IgG.</p>
APPLICATIONS	<p>Centrifuge tube to remove product from lid. Optimal working dilutions should be determined experimentally by the investigator. Prepare working dilution immediately before use.</p> <p>Western Blot 1:2,000 – 1:10,000</p> <p>Immunoprecipitation 2 – 10 µg/mg lysate</p> <p>Immunohistochemistry 1:500 – 1:2,000. Epitope retrieval with citrate buffer pH 6.0 or Tris-EDTA pH 9.0 is recommended for FFPE tissue sections.</p>
APPLICATION NOTES	Western blot of immunoprecipitates performed using Normal Pig Serum (Cat. No. S100-020), Goat anti-Rabbit Light Chain HRP Conjugate (Cat. No. A120-113P) and 4-20% SDS-PAGE (link to IP-western blot protocol in Additional Info section below).
IHC HUMAN CONTROLS	Western blot of lysates performed using standard western blot reagents and 4-20% SDS-PAGE. Breast Carcinoma, Colon Carcinoma, Ovarian Carcinoma, Prostate Carcinoma, Stomach Adenocarcinoma, Testicular Seminoma
IHC MOUSE CONTROLS	Colon Carcinoma CT26, Renal Cell Carcinoma
ADDITIONAL INFO	<p>https://www.bethyl.com/product/A303-773A</p> <p>Use the link above to view SDS, a current list of citations, and other product specific information. IP-western blot protocol: https://www.bethyl.com/content/protocol_IP_WB</p>

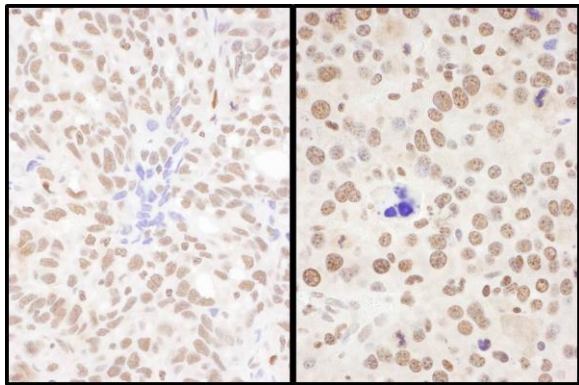
This document certifies that this product has met all of the quality control standards defined by Bethyl Laboratories, Inc.
Eric McIntush, PhD | Chief Scientific Officer Date: June 21, 2019



Detection of human SRSF7 by western blot. *Samples:* Whole cell lysate (50 µg) from HeLa, HEK293T, and Jurkat cells. *Antibodies:* Affinity purified rabbit anti-SRSF7 antibody A303-773A (lot A303-773A-2) used for WB at 0.1 µg/ml. *Detection:* Chemiluminescence with an exposure time of 3 minutes.



Detection of human SRSF7 by western blot of immunoprecipitates. *Samples:* Whole cell lysate (1 mg for IP; 20% of IP loaded) from HeLa cells. *Antibodies:* Affinity purified rabbit anti-SRSF7 antibody A303-773A (lot A303-773A-2) used for IP at 6 µg/mg lysate. SRSF7 was also immunoprecipitated by a previous lot of this antibody (A303-773A-1) and rabbit anti-SRSF7 antibody A303-772A. For blotting immunoprecipitated SRSF7, A303-773A was used at 1 µg/ml. *Detection:* Chemiluminescence with an exposure time of 3 minutes.



Detection of human and mouse SRSF7 by immunohistochemistry. *Sample:* FFPE sections of human ovarian carcinoma (left) and mouse renal cell carcinoma (right). *Antibody:* Affinity purified rabbit anti- SRSF7 (Cat. No. A30 3-773 A Lot2) used at a dilution of 1:1,000 (1 µg/ml). *Detection:* DAB