

# SRSF7 Antibody

Rabbit Polyclonal

Antigen Affinity Purified

Protein ID NP\_001026854.1

Catalog No. A303-772A

GeneID 6432

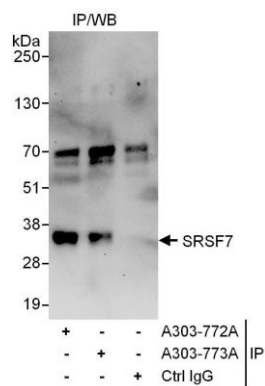
Lot No. A303-772A-1



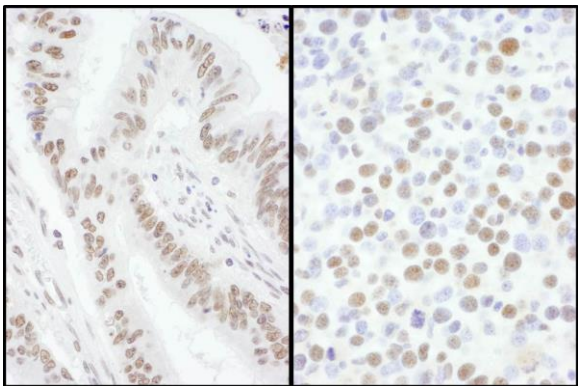
|                              |  |              |                 |                     |                     |                      |  |
|------------------------------|--|--------------|-----------------|---------------------|---------------------|----------------------|--|
| <b>APPLICATIONS</b>          | IP, IHC  |              |                 |                     |                     |                      |  |
| <b>SPECIES REACTIVITY</b>    | Human, Mouse   |              |                 |                     |                     |                      |  |
| <b>PRESUMED REACTIVITY</b>   | Based on 100% sequence identity, this antibody is predicted to react with Bovine   |              |                 |                     |                     |                      |  |
| <b>AMOUNT</b>                | 100 µl   |              |                 |                     |                     |                      |  |
| <b>CONCENTRATION</b>         | 1000 µg/ml   |              |                 |                     |                     |                      |  |
| <b>STORAGE/SHELF LIFE</b>    | 2 – 8° C / 1 year from date of receipt   |              |                 |                     |                     |                      |  |
| <b>PHYSICAL STATE</b>        | Liquid   |              |                 |                     |                     |                      |  |
| <b>BUFFER</b>                | Tris-citrate/phosphate buffer, pH 7 to 8 containing 0.09% Sodium Azide   |              |                 |                     |                     |                      |  |
| <b>ISOTYPE</b>               | IgG  |              |                 |                     |                     |                      |  |
| <b>ORIGIN</b>                | USA  |              |                 |                     |                     |                      |  |
| <b>PRODUCTION PROCEDURES</b> | <p>Antibody was affinity purified using an epitope specific to SRSF7 immobilized on solid support.</p> <p>The epitope recognized by A303-772A maps to a region between residue 75 and 125 of human Serine/Arginine-Rich Splicing Factor 7 using the numbering given in entry NP_001026854.1 (GeneID 6432).</p> <p>Antibody concentration was determined by extinction coefficient: absorbance at 280 nm of 1.4 equals 1.0 mg of IgG.</p>   |              |                 |                     |                     |                      |  |
| <b>APPLICATIONS</b>          | <p>Centrifuge tube to remove product from lid. Optimal working dilutions should be determined experimentally by the investigator. Prepare working dilution immediately before use.</p> <table><tr><td>Western Blot</td><td>Not recommended</td></tr><tr><td>Immunoprecipitation</td><td>2 – 10 µg/mg lysate</td></tr><tr><td>Immunohistochemistry</td><td>1:1,000 – 1:5,000. Epitope retrieval with citrate buffer pH 6.0 or Tris-EDTA pH 9.0 is recommended for FFPE tissue sections.</td></tr></table> | Western Blot | Not recommended | Immunoprecipitation | 2 – 10 µg/mg lysate | Immunohistochemistry | 1:1,000 – 1:5,000. Epitope retrieval with citrate buffer pH 6.0 or Tris-EDTA pH 9.0 is recommended for FFPE tissue sections. |
| Western Blot                 | Not recommended  |              |                 |                     |                     |                      |  |
| Immunoprecipitation          | 2 – 10 µg/mg lysate  |              |                 |                     |                     |                      |  |
| Immunohistochemistry         | 1:1,000 – 1:5,000. Epitope retrieval with citrate buffer pH 6.0 or Tris-EDTA pH 9.0 is recommended for FFPE tissue sections.   |              |                 |                     |                     |                      |  |
| <b>APPLICATION NOTES</b>     | Western blot of immunoprecipitates performed using Normal Pig Serum (Cat. No. S100-020), Goat anti-Rabbit Light Chain HRP Conjugate (Cat. No. A120-113P) and 4-20% SDS-PAGE (link to IP-western blot protocol in Additional Info section below).   |              |                 |                     |                     |                      |  |
| <b>IHC HUMAN CONTROLS</b>    | Breast Carcinoma, Colon Carcinoma, Ovarian Carcinoma, Prostate Carcinoma, Stomach Adenocarcinoma, Testicular Seminoma  |              |                 |                     |                     |                      |  |
| <b>IHC MOUSE CONTROLS</b>    | Colon Carcinoma CT26, Renal Cell Carcinoma   |              |                 |                     |                     |                      |  |
| <b>ADDITIONAL INFO</b>       | <p><a href="https://www.bethyl.com/product/A303-772A">https://www.bethyl.com/product/A303-772A</a></p> <p>Use the link above to view SDS, a current list of citations, and other product specific information.</p> <p>IP-western blot protocol: <a href="https://www.bethyl.com/content/protocol_IP_WB">https://www.bethyl.com/content/protocol_IP_WB</a></p>  |              |                 |                     |                     |                      |  |

This document certifies that this product has met all of the quality control standards defined by Bethyl Laboratories, Inc.  
Eric McIntush, PhD | Chief Scientific Officer

Date: June 21, 2019



**Detection of human SRSF7 by western blot of immunoprecipitates.** *Samples:* Whole cell lysate (1 mg for IP, 20% of IP loaded) from HeLa cells. *Antibodies:* Affinity purified rabbit anti-SRSF7 antibody A303-772A used for IP at 6 µg/mg lysate. SRSF7 was also immunoprecipitated by rabbit anti-SRSF7 antibody A303-773A, which recognizes a downstream epitope. For blotting immunoprecipitated SRSF7, A303-773A was used at 1 µg/ml. *Detection:* Chemiluminescence with an exposure time of 30 seconds.



**Detection of human and mouse SRSF7 by immunohistochemistry.** *Sample:* FFPE sections of human colon carcinoma (left) and mouse renal cell carcinoma (right). *Antibody:* Affinity purified rabbit anti-SRSF7 (Cat. No. A303-772A Lot1) used at a dilution of 1:5,000 (0.2 µg/ml) and 1:1,000 (1 µg/ml). *Detection:* DAB