

RPB3 Antibody

Rabbit Polyclonal

Antigen Affinity Purified	RefSeq ID	NP_116558.1
Catalog No. A303-771A	Uniprot ID	P19387
Lot No. A303-771A-2	GeneID	5432

APPLICATIONS	WB, IP, IHC
SPECIES REACTIVITY	Human, Mouse
PRESUMED REACTIVITY	Based on 100% sequence identity, this antibody is predicted to react with Bovine
AMOUNT	100 µl
CONCENTRATION	1000 µg/ml
STORAGE/SHELF LIFE	2 – 8°C / 1 year from date of receipt
PHYSICAL STATE	Liquid
BUFFER	Tris-citrate/phosphate buffer, pH 7 to 8 containing 0.09% Sodium Azide
ISOTYPE	IgG
ORIGIN	USA
PRODUCTION PROCEDURES	Antibody was affinity purified using an epitope specific to RPB3 immobilized on solid support.

The epitope recognized by A303-771A maps to a region between residue 225 and 275 of human RNA Polymerase II Subunit B3 using the numbering given in entry NP_116558.1 (GeneID 5432).

Antibody concentration was determined by extinction coefficient: absorbance at 280 nm of 1.4 equals 1.0 mg of IgG.

APPLICATIONS Centrifuge tube to remove product from lid. Optimal working dilutions should be determined experimentally by the investigator. Prepare working dilution immediately before use.

Western Blot 1:10,000 – 1:25,000

Immunoprecipitation 2 – 10 µg/mg lysate

Immunohistochemistry 1:500 to 1:2,000. Epitope retrieval with citrate buffer pH6.0 is recommended for FFPE tissue sections.

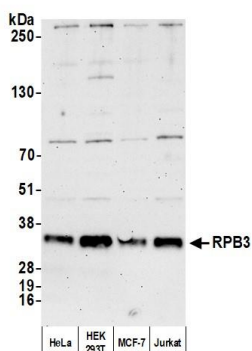
IHC HUMAN CONTROLS Breast Carcinoma, Colon Carcinoma, Prostate Carcinoma, Testicular Seminoma

IHC MOUSE CONTROLS Hybridoma Tumor

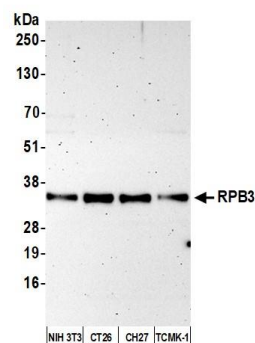
ADDITIONAL INFO <https://www.fortislife.com/p/A303-771A>

Use the link above to view SDS, a current list of citations, and other product specific information.

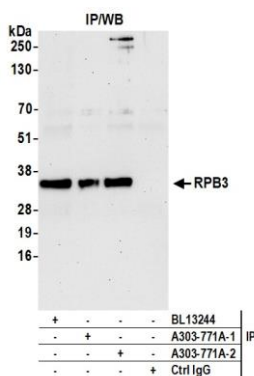
This document certifies that this product has met all of the quality control standards defined by Bethyl Laboratories, Inc.
Michael Spencer, PhD Date: February 27, 2023



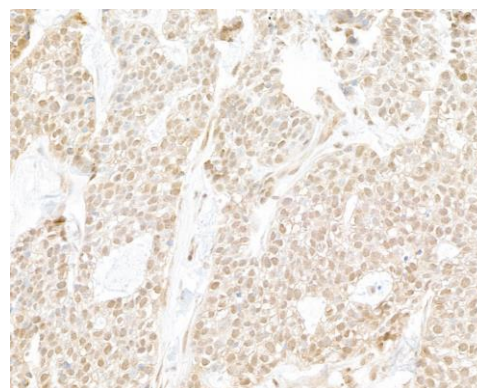
Detection of human RPB3 by western blot. *Samples:* Whole cell lysate (10 µg) from HeLa, HEK293T, MCF-7, and Jurkat cells prepared using NETN lysis buffer. *Antibody:* Affinity purified rabbit anti-RPB3 antibody (A303-771A lot 2) used for WB at 0.04 µg/ml. *Detection:* Chemiluminescence with an exposure time of 75 seconds.



Detection of mouse RPB3 by western blot. *Samples:* Whole cell lysate (10 µg) from NIH 3T3, CT26, CH27, and TCMK-1 cells prepared using NETN lysis buffer. *Antibody:* Affinity purified rabbit anti-RPB3 antibody (A303-771A lot 2) used for WB at 0.04 µg/ml. *Detection:* Chemiluminescence with an exposure time of 3 minutes.



Detection of human RPB3 by western blot of immunoprecipitates. *Samples:* Whole cell lysate (1.0 mg per IP reaction; 20% of IP loaded) from HEK293T cells prepared using NETN lysis buffer. *Antibodies:* Affinity purified rabbit anti-RPB3 antibody (A303-771A lot 2) used for IP at 6 µg per reaction. RPB3 was also immunoprecipitated by a previous lot of this antibody (A303-771A lot 1) and a second antibody against a different epitope of RPB3 (BL13244). For blotting immunoprecipitated RPB3, A303-771A was used at 0.04 µg/ml. *Detection:* Chemiluminescence with an exposure time of 30 seconds.



Detection of human RPB3 by immunohistochemistry. *Sample:* FFPE section of human breast carcinoma. *Antibody:* Affinity purified rabbit anti-RPB3 (Cat. No. A303-771A Lot2) used at a dilution of 1:1,000 (1µg/ml). *Detection:* DAB