

Beta-Arrestin 1 Antibody

Rabbit Polyclonal

Antigen Affinity Purified

Protein ID NP_004032.2

Catalog No. A303-745A

GeneID 408

Lot No. A303-745A-1



APPLICATIONS	WB, IP, IHC
SPECIES REACTIVITY	Human
AMOUNT	100 µl
CONCENTRATION	1000 µg/ml
STORAGE/SHELF LIFE	2 - 8° C / 1 year from date of receipt
PHYSICAL STATE	Liquid
BUFFER	Tris-citrate/phosphate buffer, pH 7 to 8 containing 0.09% Sodium Azide
ISOTYPE	IgG
ORIGIN	USA
PRODUCTION PROCEDURES	Antibody was affinity purified using an epitope specific to Beta-Arrestin 1 immobilized on solid support.

The epitope recognized by A303-745A maps to a region between residue 368 and 418 of human Arrestin, Beta 1 using the numbering given in entry NP_004032.2 (GeneID 408).

Antibody concentration was determined by extinction coefficient: absorbance at 280 nm of 1.4 equals 1.0 mg of IgG.

APPLICATIONS Centrifuge tube to remove product from lid. Optimal working dilutions should be determined experimentally by the investigator. Prepare working dilution immediately before use.

Western Blot 1:2,000 - 1:10,000

Immunoprecipitation 2 - 10 µg/mg lysate

Immunohistochemistry 1:500 - 1:2,000. Epitope retrieval with citrate buffer pH 6.0 is recommended for FFPE tissue sections.

APPLICATION NOTES Western blot of immunoprecipitates performed using Normal Pig Serum (Cat. No. S100-020), Goat anti-Rabbit Light Chain HRP Conjugate (Cat. No. A120-113P) and 4-20% SDS-PAGE (link to IP-western blot protocol in Additional Info section below).

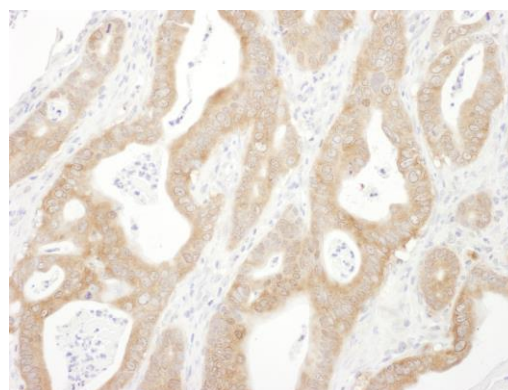
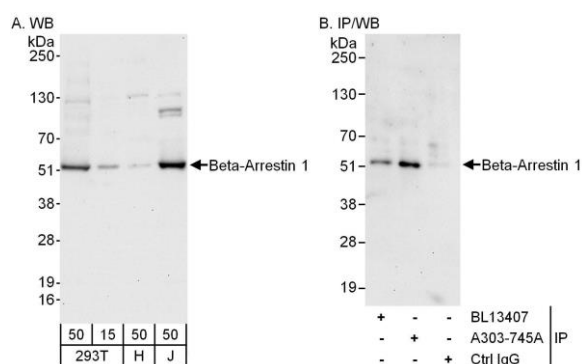
IHC HUMAN CONTROLS Western blot of lysates performed using standard western blot reagents and 4-20% SDS-PAGE. Breast Carcinoma, Ovarian Carcinoma, Stomach Adenocarcinoma

ADDITIONAL INFO <https://www.bethyl.com/product/A303-745A>

Use the link above to view SDS, a current list of citations, and other product specific information.

IP-western blot protocol: https://www.bethyl.com/content/protocol_IP_WB

This document certifies that this product has met all of the quality control standards defined by Bethyl Laboratories, Inc.
Eric McIntush, PhD | Chief Scientific Officer Date: June 21, 2019



Detection of human Beta-Arrestin 1 by western blot and immunoprecipitation. *Samples:* Whole cell lysate from HEK293T (15 and 50 μ g for WB; 1 mg for IP, 20% of IP loaded), HeLa (H; 50 μ g) and Jurkat (J; 50 μ g) cells. *Antibodies:* Affinity purified rabbit anti-Beta-Arrestin 1 antibody A303-745A used for WB at 0.1 μ g/ml (A) and 1 μ g/ml (B) and used for IP at 6 μ g/mg lysate. Beta-Arrestin 1 was also immunoprecipitated by rabbit anti-Beta-Arrestin 1 antibody BL13407, which recognizes an upstream epitope. *Detection:* Chemiluminescence with exposure times of 30 seconds (A and B).

Detection of human Beta-Arrestin 1 by immunohistochemistry. *Sample:* FFPE section of human stomach carcinoma. *Antibody:* Affinity purified rabbit anti-Beta-Arrestin 1 (Cat. No. A303-745A Lot1) used at a dilution of 1:1,000 (1 μ g/ml). *Detection:* DAB