

Beta-Adducin Antibody

Rabbit Polyclonal

Antigen Affinity Purified

Protein ID NP_001171983.1

Catalog No. A303-742A

GeneID 119

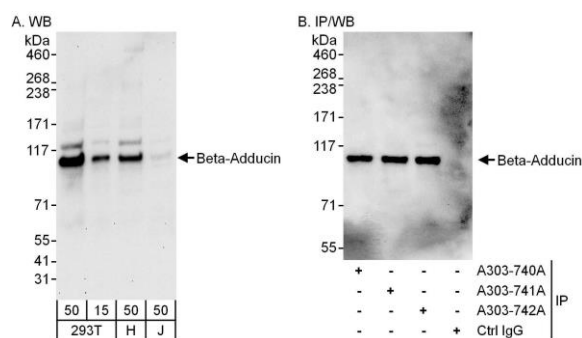
Lot No. A303-742A-1



APPLICATIONS	WB, IP
SPECIES REACTIVITY	Human
PRESUMED REACTIVITY	Based on 100% sequence identity, this antibody is predicted to react with Orangutan
AMOUNT	100 µl
CONCENTRATION	1000 µg/ml
STORAGE/SHELF LIFE	2 - 8° C / 1 year from date of receipt
PHYSICAL STATE	Liquid
BUFFER	Tris-citrate/phosphate buffer, pH 7 to 8 containing 0.09% Sodium Azide
ISOTYPE	IgG
ORIGIN	USA
PRODUCTION PROCEDURES	Antibody was affinity purified using an epitope specific to Beta-Adducin immobilized on solid support. The epitope recognized by A303-742A maps to a region between residue 600 and 650 of human Adducin Beta using the numbering given in entry NP_001171983.1 (GeneID 119). Antibody concentration was determined by extinction coefficient: absorbance at 280 nm of 1.4 equals 1.0 mg of IgG.
APPLICATIONS	Centrifuge tube to remove product from lid. Optimal working dilutions should be determined experimentally by the investigator. Prepare working dilution immediately before use. Western Blot 1:2,000 - 1:10,000 Immunoprecipitation 2 - 10 µg/mg lysate
APPLICATION NOTES	Western blot of immunoprecipitates performed using Normal Pig Serum (Cat. No. S100-020), Goat anti-Rabbit Light Chain HRP Conjugate (Cat. No. A120-113P) and 4-8% SDS-PAGE (link to IP-western blot protocol in Additional Info section below). Western blot of lysates performed using standard western blot reagents and 4-8% SDS-PAGE.
ADDITIONAL INFO	https://www.bethyl.com/product/A303-742A Use the link above to view SDS, a current list of citations, and other product specific information. IP-western blot protocol: https://www.bethyl.com/content/protocol_IP_WB

This document certifies that this product has met all of the quality control standards defined by Bethyl Laboratories, Inc.
Eric McIntush, PhD | Chief Scientific Officer

Date: June 21, 2019



Detection of human Beta-Adducin by western blot and immunoprecipitation.

Samples: Whole cell lysate from HEK293T (15 and 50 μ g for WB; 1 mg for IP, 20% of IP loaded), HeLa (H; 50 μ g) and Jurkat (J; 50 μ g) cells.

Antibodies: Affinity purified rabbit anti-Beta-Adducin antibody A303-742A used for WB at 0.1 μ g/ml (A) and 1 μ g/ml (B) and used for IP at 6 μ g/mg lysate. Beta-Adducin was also immunoprecipitated by rabbit anti-Beta-Adducin antibodies A303-740A and A303-741A, which recognize upstream epitopes. *Detection:* Chemiluminescence with exposure times of 30 seconds (A) and 10 seconds (B).