

Plakoglobin Antibody

Rabbit Polyclonal

Antigen Affinity Purified

Protein ID NP_002221.1

Catalog No. A303-717A

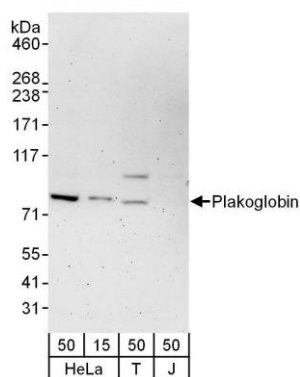
GeneID 3728

Lot No. A303-717A-1



APPLICATIONS	WB
SPECIES REACTIVITY	Human
AMOUNT	100 µl
CONCENTRATION	1000 µg/ml
STORAGE/SHELF LIFE	2 - 8° C / 1 year from date of receipt
PHYSICAL STATE	Liquid
BUFFER	Tris-citrate/phosphate buffer, pH 7 to 8 containing 0.09% Sodium Azide
ISOTYPE	IgG
ORIGIN	USA
PRODUCTION PROCEDURES	Antibody was affinity purified using an epitope specific to Plakoglobin immobilized on solid support. The epitope recognized by A303-717A maps to a region between residue 1 and 50 of human Junction Plakoglobin using the numbering given in entry NP_002221.1 (GeneID 3728). Antibody concentration was determined by extinction coefficient: absorbance at 280 nm of 1.4 equals 1.0 mg of IgG.
APPLICATIONS	Centrifuge tube to remove product from lid. Optimal working dilutions should be determined experimentally by the investigator. Prepare working dilution immediately before use. Western Blot 1:2,000 - 1:10,000 Immunoprecipitation Not recommended
APPLICATION NOTES	Western blot of lysates performed using standard western blot reagents and 4-8% SDS-PAGE.
ADDITIONAL INFO	https://www.bethyl.com/product/A303-717A Use the link above to view SDS, a current list of citations, and other product specific information.

This document certifies that this product has met all of the quality control standards defined by Bethyl Laboratories, Inc.
Eric McIntush, PhD | Chief Scientific Officer Date: June 21, 2019

**Detection of human Plakoglobin by western blot.**

Samples: Whole cell lysate from HeLa (15 and 50 µg for WB), HEK293T (T; 50 µg) and Jurkat (J; 50 µg) cells.

Antibodies: Affinity purified rabbit anti-Plakoglobin antibody A303-717A used for WB at 0.1 µg/ml. *Detection:* Chemiluminescence with an exposure time of 3 minutes.