

Alpha-Adducin Antibody

Rabbit Polyclonal

Antigen Affinity Purified

Protein ID NP_001110.2

Catalog No. A303-714A

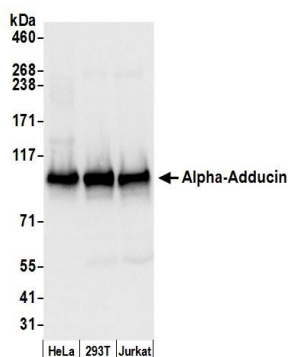
GeneID 118

Lot No. A303-714A-1



APPLICATIONS	WB, IP, IHC
SPECIES REACTIVITY	Human
PRESUMED REACTIVITY	Based on 100% sequence identity, this antibody is predicted to react with Orangutan
AMOUNT	100 µl
CONCENTRATION	1000 µg/ml
STORAGE/SHELF LIFE	2 - 8° C / 1 year from date of receipt
PHYSICAL STATE	Liquid
BUFFER	Tris-citrate/phosphate buffer, pH 7 to 8 containing 0.09% Sodium Azide
ISOTYPE	IgG
ORIGIN	USA
PRODUCTION PROCEDURES	Antibody was affinity purified using an epitope specific to Alpha-Adducin immobilized on solid support. The epitope recognized by A303-714A maps to a region between residue 632 and 682 of human Adducin 1 (alpha) using the numbering given in entry NP_001110.2 (GeneID 118). Antibody concentration was determined by extinction coefficient: absorbance at 280 nm of 1.4 equals 1.0 mg of IgG.
APPLICATIONS	Centrifuge tube to remove product from lid. Optimal working dilutions should be determined experimentally by the investigator. Prepare working dilution immediately before use. Western Blot 1:10,000 - 1:25,000 Immunoprecipitation 2 - 10 µg/mg lysate Immunohistochemistry 1:500 - 1:2,000. Epitope retrieval with citrate buffer pH 6.0 is recommended for FFPE tissue sections.
APPLICATION NOTES	Western blot of immunoprecipitates performed using Normal Pig Serum (Cat. No. S100-020), Goat anti-Rabbit Light Chain HRP Conjugate (Cat. No. A120-113P) and 4-8% SDS-PAGE (link to IP-western blot protocol in Additional Info section below). Western blot of lysates performed using standard western blot reagents and 4-8% SDS-PAGE.
IHC HUMAN CONTROLS	Breast Carcinoma, Colon Carcinoma
ADDITIONAL INFO	https://www.bethyl.com/product/A303-714A Use the link above to view SDS, a current list of citations, and other product specific information. IP-western blot protocol: https://www.bethyl.com/content/protocol_IP_WB

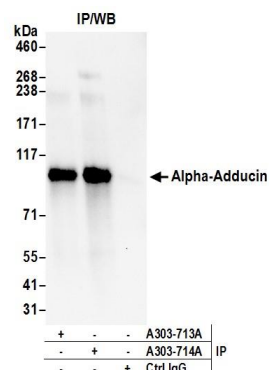
This document certifies that this product has met all of the quality control standards defined by Bethyl Laboratories, Inc.
Eric McIntush, PhD | Chief Scientific Officer Date: June 21, 2019



Detection of human Alpha-Adducin by western blot.

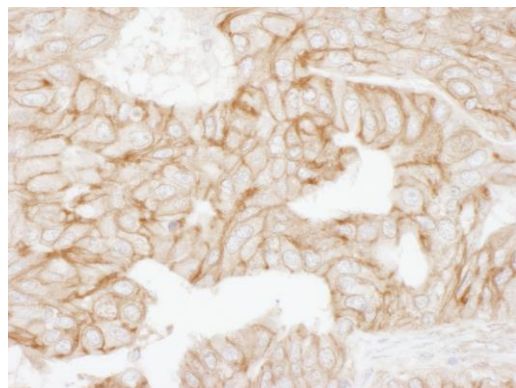
Samples: Whole cell lysate (50 µg) from HeLa, HEK293T, and Jurkat cells prepared using NETN lysis buffer.

Antibody: Affinity purified rabbit anti-Alpha-Adducin antibody A303-714A (lot A303-714A-1) used for WB at 0.04 µg/ml. *Detection:* Chemiluminescence with an exposure time of 3 seconds.

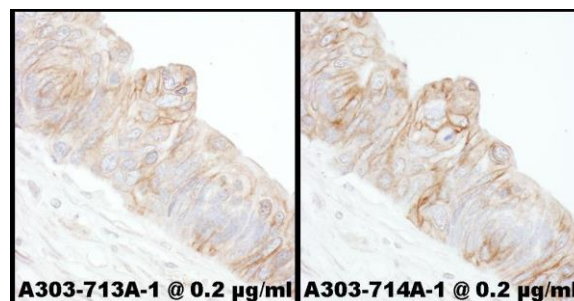


Detection of human Alpha-Adducin by western blot of immunoprecipitates.

Samples: Whole cell lysate (0.5 or 1.0 mg per IP reaction; 20% of IP loaded) from HeLa cells prepared using NETN lysis buffer. *Antibodies:* Affinity purified rabbit anti-Alpha-Adducin antibody A303-714A (lot A303-714A-1) used for IP at 6 µg per reaction. Alpha-Adducin was also immunoprecipitated by rabbit anti-Alpha-Adducin antibody A303-713A. For blotting immunoprecipitated Alpha-Adducin, A303-714A was used at 1 µg/ml. *Detection:* Chemiluminescence with an exposure time of 3 seconds.



Detection of human Alpha-Adducin by immunohistochemistry. *Sample:* FFPE section of human ovarian carcinoma. *Antibody:* Affinity purified rabbit anti-Alpha-Adducin (Cat. No. A303-714A Lot1) used at a dilution of 1:1,000 (1 µg/ml). *Detection:* DAB



Detection of human Alpha-Adducin by immunohistochemistry. *Samples:* FFPE sections of human ovarian carcinoma. *Antibody:* Affinity purified rabbit anti-Alpha-Adducin Cat. No. A303-714A Lot1 used at a dilution of 1:5,000 (0.2 µg/ml) (right) and Cat. No. A303-713A Lot1 used at a dilution of 1:5,000 (0.2 µg/ml) (left). *Detection:* DAB