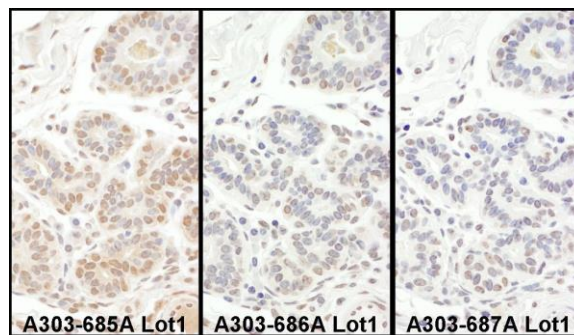


Detection of human TAF5 by western blot and immunoprecipitation. *Samples:* Whole cell lysate from HeLa (15 and 50 μ g for WB; 1 mg for IP, 20% of IP loaded), HEK293T (T; 50 μ g) and Jurkat (J; 50 μ g) cells. *Antibodies:* Affinity purified rabbit anti-TAF5 antibody A303-686A used for WB at 0.1 μ g/ml (A) and 1 μ g/ml (B) and used for IP at 6 μ g/mg lysate. TAF5 was also immunoprecipitated by rabbit anti-TAF5 antibodies A303-685A and A303-687A, which recognize other epitopes. *Detection:* Chemiluminescence with exposure times of 3 minutes (A) and 30 seconds (B).



Detection of human TAF5 by immunohistochemistry. *Samples:* FFPE serial sections of human breast carcinoma. *Antibody:* Affinity purified rabbit anti-TAF5 (Cat. No. A303-685A Lot1, left image, A303-686A Lot1, middle image and Cat. No. A303-687A Lot1, right image) used at a dilution of 1:1,000 (1 μ g/ml). *Detection:* DAB