

Integrin Alpha 6 Antibody

Rabbit Polyclonal

Antigen Affinity Purified

Protein ID EAX11175.1

Catalog No. A303-681A

GeneID 3655

Lot No. A303-681A-1



APPLICATIONS	IP
SPECIES REACTIVITY	Human
PRESUMED REACTIVITY	Based on 100% sequence identity, this antibody is predicted to react with Mouse
AMOUNT	100 µl
CONCENTRATION	1000 µg/ml
STORAGE/SHELF LIFE	2 – 8° C / 1 year from date of receipt
PHYSICAL STATE	Liquid
BUFFER	Tris-citrate/phosphate buffer, pH 7 to 8 containing 0.09% Sodium Azide
ISOTYPE	IgG
ORIGIN	USA
PRODUCTION PROCEDURES	Antibody was affinity purified using an epitope specific to Integrin Alpha 6 immobilized on solid support.

The epitope recognized by A303-681A maps to a region between residue 50 and 100 of human Integrin, Alpha 6 using the numbering given in entry EAX11175.1 (GeneID 3655).

Antibody concentration was determined by extinction coefficient: absorbance at 280 nm of 1.4 equals 1.0 mg of IgG.

APPLICATIONS Centrifuge tube to remove product from lid. Optimal working dilutions should be determined experimentally by the investigator. Prepare working dilution immediately before use.

Western Blot Not recommended

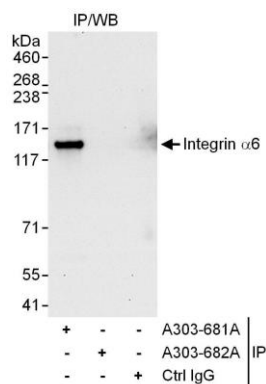
Immunoprecipitation 2 – 10 µg/mg lysate

APPLICATION NOTES Western blot of immunoprecipitates performed using Normal Pig Serum (Cat. No. S100-020), Goat anti-Rabbit Light Chain HRP Conjugate (Cat. No. A120-113P) and 4-8% SDS-PAGE (link to IP-western blot protocol in Additional Info section below).

ADDITIONAL INFO <https://www.bethyl.com/product/A303-681A>

Use the link above to view SDS, a current list of citations, and other product specific information. IP-western blot protocol: https://www.bethyl.com/content/protocol_IP_WB

This document certifies that this product has met all of the quality control standards defined by Bethyl Laboratories, Inc.
Eric McIntush, PhD | Chief Scientific Officer Date: June 21, 2019



Detection of human Integrin Alpha 6 by western blot of immunoprecipitates. *Samples:* Whole cell lysate (1 mg for IP, 20% of IP loaded) from HeLa cells. *Antibodies:* Affinity purified rabbit anti-Integrin Alpha 6 antibody A303-681A used for IP at 6 µg/mg lysate. Integrin Alpha 6 was unsuccessfully immunoprecipitated by rabbit anti-Integrin Alpha 6 antibody A303-682A, which recognizes a downstream epitope. For blotting immunoprecipitated Integrin Alpha 6, A303-682A was used at 1 µg/ml. *Detection:* Chemiluminescence with an exposure time of 30 seconds.