

# Bcl-2 Antibody

Rabbit Polyclonal

Antigen Affinity Purified	RefSeq ID	NP_000624.2
Catalog No. A303-675A	Uniprot ID	P10415
Lot No. A303-675A-1	GeneID	596

<b>APPLICATIONS</b>	IP, IHC, Flow Cyt
<b>SPECIES REACTIVITY</b>	Human
<b>AMOUNT</b>	100 µl
<b>CONCENTRATION</b>	1000 µg/ml
<b>STORAGE/SHELF LIFE</b>	2 – 8°C / 1 year from date of receipt
<b>PHYSICAL STATE</b>	Liquid
<b>BUFFER</b>	Tris-citrate/phosphate buffer, pH 7 to 8 containing 0.09% Sodium Azide
<b>ISOTYPE</b>	IgG
<b>ORIGIN</b>	USA
<b>PRODUCTION PROCEDURES</b>	Antibody was affinity purified using an epitope specific to Bcl-2 immobilized on solid support.

The epitope recognized by A303-675A maps to a region between residue 50 and 100 of human B-cell CLL/lymphoma 2 using the numbering given in entry NP\_000624.2 (GeneID 596).

Antibody concentration was determined by extinction coefficient: absorbance at 280 nm of 1.4 equals 1.0 mg of IgG.

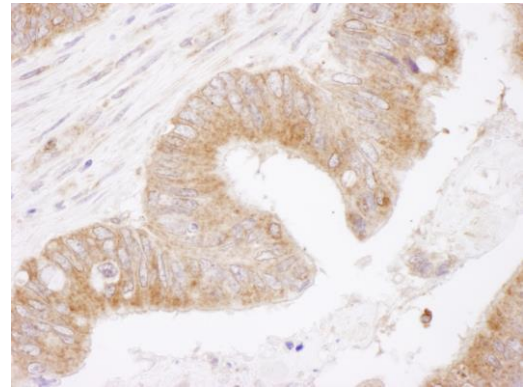
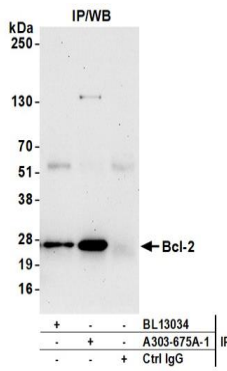
**APPLICATIONS** Centrifuge tube to remove product from lid. Optimal working dilutions should be determined experimentally by the investigator. Prepare working dilution immediately before use.

Western Blot	Not recommended. A303-675A has not performed satisfactorily when used for WB of Bcl-2 in crude preparations (e.g. whole cell lysate). This antibody can be used for WB of enriched (e.g. immunoprecipitated) sources of Bcl-2.
Immunoprecipitation	2 – 10 µg/mg lysate
Immunohistochemistry	1:500 – 1:2,000. Epitope retrieval with citrate buffer pH 6.0 is recommended for FFPE tissue sections.
Flow Cytometry	Fixed in 4% formaldehyde and permeabilized with 90% methanol. 0.25 ul per 1 x 10 <sup>6</sup> cells.

**IHC HUMAN CONTROLS** Colon Carcinoma, Ovarian Carcinoma, Prostate Carcinoma

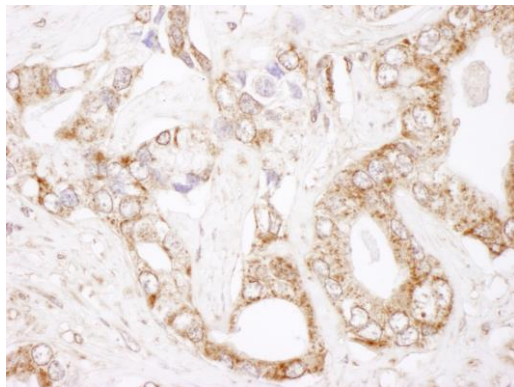
**ADDITIONAL INFO** <https://www.fortislife.com/p/A303-675A>  
Use the link above to view SDS, a current list of citations, and other product specific information.

This document certifies that this product has met all of the quality control standards defined by Bethyl Laboratories, Inc.  
Michael Spencer, PhD Date: November 15, 2022

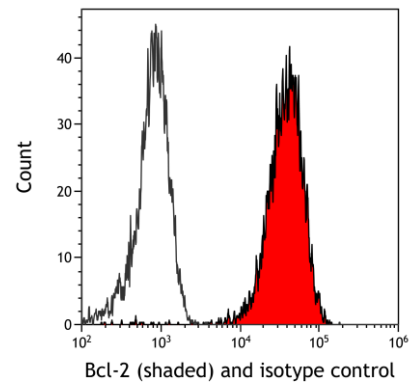


**Detection of human Bcl-2 by western blot of immunoprecipitates.** *Samples:* Whole cell lysate (1 mg for IP, 20% of IP loaded) from Jurkat cells. *Antibodies:* Affinity purified rabbit anti-Bcl-2 antibody A303-675A used for IP at 6 µg/mg lysate. Bcl-2 was also immunoprecipitated by rabbit anti-Bcl-2 antibody BL13035, which recognizes an upstream epitope. For blotting immunoprecipitated Bcl-2, A303-675A was used at 1 µg/ml. *Detection:* Chemiluminescence with an exposure time of 3 minutes.

**Detection of human Bcl-2 by immunohistochemistry.** *Sample:* FFPE section of human colon carcinoma. *Antibody:* Affinity purified rabbit anti-Bcl-2 (Cat. No. A303-675A Lot1) used at a dilution of 1:1,000 (1 µg/ml). *Detection:* DAB



**Detection of human Bcl-2 by immunohistochemistry.** *Sample:* FFPE section of human prostate carcinoma. *Antibody:* Affinity purified rabbit anti-Bcl-2 (Cat. No. A303-675A Lot1) used at a dilution of 1:1,000 (1 µg/ml). *Detection:* DAB



**Detection of human Bcl-2 (shaded) in Jurkat cells by flow cytometry.** *Antibody:* Rabbit anti-Bcl-2 polyclonal antibody (A303-675A) or isotype control (unshaded). *Secondary:* DyLight® 488-conjugated goat anti-rabbit IgG (A120-101D2).