

TFEB Antibody

Rabbit Polyclonal

Antigen Affinity Purified

Protein ID NP_009093.1

Catalog No. A303-673A

GeneID 7942

Lot No. A303-673A-8

APPLICATIONS	WB, IP
SPECIES REACTIVITY	Human, Mouse
AMOUNT	100 µl
CONCENTRATION	1000 µg/ml
STORAGE/SHELF LIFE	2 – 8°C / 1 year from date of receipt
PHYSICAL STATE	Liquid
BUFFER	Tris-citrate/phosphate buffer, pH 7 to 8 containing 0.09% Sodium Azide
ISOTYPE	IgG
ORIGIN	USA
PRODUCTION PROCEDURES	Antibody was affinity purified using an epitope specific to TFEB immobilized on solid support.

The epitope recognized by A303-673A maps to a region between residue 426 and 476 of human Transcription Factor EB using the numbering given in entry NP_009093.1 (GeneID 7942).

Antibody concentration was determined by extinction coefficient: absorbance at 280 nm of 1.4 equals 1.0 mg of IgG.

APPLICATIONS Centrifuge tube to remove product from lid. Optimal working dilutions should be determined experimentally by the investigator. Prepare working dilution immediately before use.

Western Blot 1:2,000 – 1:10,000

Immunoprecipitation 2 – 10 µg/mg lysate

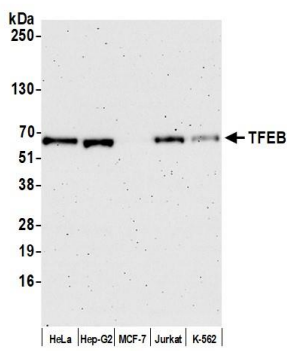
IHC HUMAN CONTROLS Breast Carcinoma, Linitis Plastica Stomach Cancer, Ovarian Carcinoma, Prostate Carcinoma

IHC MOUSE CONTROLS Renal Cell Carcinoma

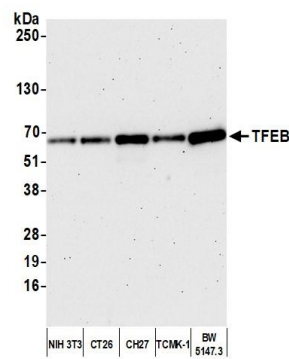
ADDITIONAL INFO <https://www.bethyl.com/product/A303-673A>

Use the link above to view SDS, a current list of citations, and other product specific information.
IP-western blot protocol: https://www.bethyl.com/content/protocol_IP_WB

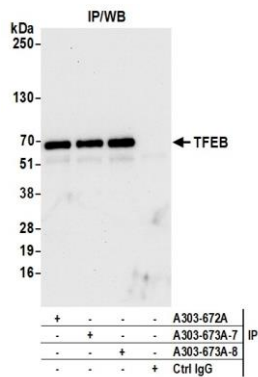
This document certifies that this product has met all of the quality control standards defined by Bethyl Laboratories, Inc.
Michael Spencer, PhD Date: April 25, 2022



Detection of human TFEB by western blot. *Samples:* Whole cell lysate (10 µg) from HeLa, Hep-G2, MCF-7, Jurkat, and K-562 cells prepared using NETN lysis buffer. *Antibody:* Affinity purified rabbit anti-TFEB antibody (A303-673A lot 8) used for WB at 0.1 µg/ml. *Detection:* Chemiluminescence with an exposure time of 3 minutes.



Detection of mouse TFEB by western blot. *Samples:* Whole cell lysate (10 µg) from NIH 3T3, CT26, CH27, TCMK-1, and BW5147.3 cells prepared using NETN lysis buffer. *Antibody:* Affinity purified rabbit anti-TFEB antibody (A303-673A lot 8) used for WB at 0.1 µg/ml. *Detection:* Chemiluminescence with an exposure time of 75 seconds.



Detection of human TFEB by western blot of immunoprecipitates. *Samples:* Whole cell lysate (1.0 mg per IP reaction; 20% of IP loaded) from HeLa cells prepared using NETN lysis buffer. *Antibodies:* Affinity purified rabbit anti-TFEB antibody (A303-673A lot 8) used for IP at 6 µg per reaction. TFEB was also immunoprecipitated by a previous lot of this antibody (A303-673A lot 7) and a second antibody against a different epitope of TFEB (A303-672A). For blotting immunoprecipitated TFEB, A303-673A was used at 0.1 µg/ml. *Detection:* Chemiluminescence with an exposure time of 10 seconds.