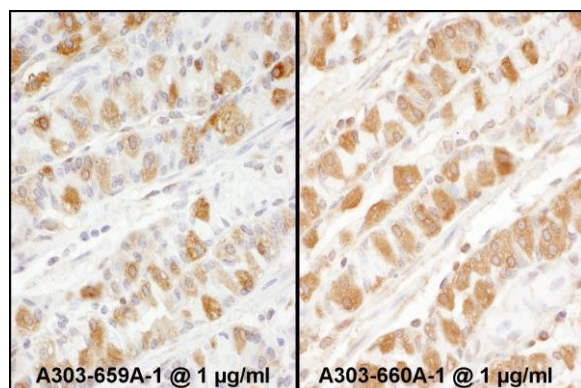
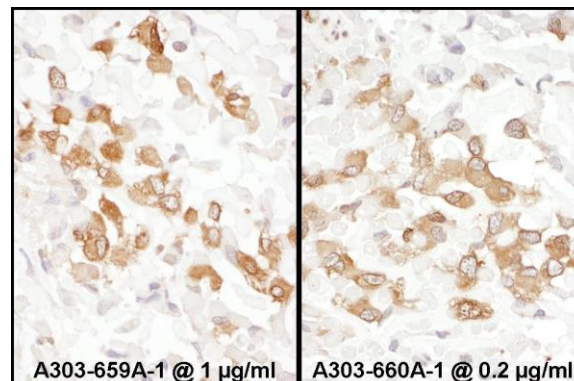


Detection of human and mouse PKM2 by western blot (h and m) and immunoprecipitation (h). *Samples:* Whole cell lysate from HeLa (15 and 50 µg for WB; 1 mg for IP, 20% of IP loaded), HEK293T (T; 50 µg), Jurkat (J; 50 µg) and mouse NIH 3T3 (M; 50 µg) cells. *Antibodies:* Affinity purified rabbit anti-PKM2 antibody A303-660A used for WB at 0.1 µg/ml (A) and 0.4 µg/ml (B) and used for IP at 6 µg/mg lysate. PKM2 was also immunoprecipitated by rabbit anti-PKM2 antibody A303-659A, which recognizes an upstream epitope. *Detection:* Chemiluminescence with exposure times of 10 seconds (A and B).



Detection of human PKM2 by immunohistochemistry. *Samples:* FFPE sections of human stomach. *Antibody:* Affinity purified rabbit anti- PKM2 Cat. No. A303-659A Lot1 used at a dilution of 1:1,000 (1 µg/ml) (left) and Cat. No. A303-660A Lot1 used at a dilution of 1:1,000 (1 µg/ml) (right). *Detection:* DAB



Detection of human PKM2 by immunohistochemistry. *Samples:* FFPE sections of human osteosarcoma. *Antibody:* Affinity purified rabbit anti- PKM2 Cat. No. A303-659A Lot1 used at a dilution of 1:1,000 (1 µg/ml) (left) and Cat. No. A303-660A Lot1 used at a dilution of 1:5,000 (0.2 µg/ml) (right). *Detection:* DAB