

# PKM2 Antibody

Rabbit Polyclonal

Antigen Affinity Purified Protein ID NP\_002645.3  
Catalog No. A303-660A-T GeneID 5315  
Lot No. A303-660A-T-1



<b>APPLICATIONS</b>	WB, IP, IHC
<b>SPECIES REACTIVITY</b>	Human, Mouse
<b>PRESUMED REACTIVITY</b>	Based on 100% sequence identity, this antibody is predicted to react with Rat, X. laevis, Chicken, Rabbit, Cat and Orangutan
<b>AMOUNT</b>	20 µl (2 blots)
<b>CONCENTRATION</b>	100 µg/ml
<b>STORAGE/SHELF LIFE</b>	2 - 8° C / 1 year from date of receipt
<b>PHYSICAL STATE</b>	Liquid
<b>BUFFER</b>	Tris-buffered Saline containing 0.1% BSA and 0.09% Sodium Azide
<b>ISOTYPE</b>	IgG
<b>ORIGIN</b>	USA
<b>PRODUCTION PROCEDURES</b>	Antibody was affinity purified using an epitope specific to PKM2 immobilized on solid support.

The epitope recognized by A303-660A-T maps to a region between residue 481 and 531 of human Pyruvate Kinase Isozymes M1/M2 using the numbering given in entry NP\_002645.3 (GeneID 5315).

**APPLICATIONS** Centrifuge tube to remove product from lid. Optimal working dilutions should be determined experimentally by the investigator. Prepare working dilution immediately before use.

Western Blot	1:1000
Immunoprecipitation	The antibody contained within A303-660A-T has been qualified for use in immunoprecipitation; however, we recommend using the alternative formulation of this antibody found as product A303-660A.
Immunohistochemistry	1:50 - 1:200. Epitope retrieval with citrate buffer pH 6.0 is recommended for FFPE tissue sections.

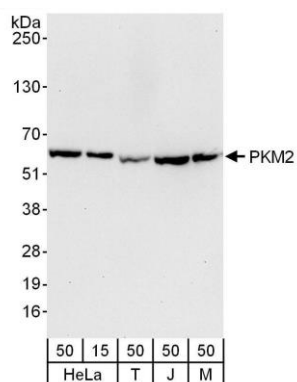
**APPLICATION NOTES** Western blot of immunoprecipitates performed using Normal Pig Serum (Cat. No. S100-020), Goat anti-Rabbit Light Chain HRP Conjugate (Cat. No. A120-113P) and 4-20% SDS-PAGE (link to IP-western blot protocol in Additional Info section below).

Western blot of lysates performed using standard western blot reagents and 4-20% SDS-PAGE.

## ADDITIONAL INFO

<https://www.bethyl.com/product/A303-660A-T>  
Use the link above to view SDS, a current list of citations, and other product specific information.  
IP-western blot protocol: [https://www.bethyl.com/content/protocol\\_IP\\_WB](https://www.bethyl.com/content/protocol_IP_WB)

This document certifies that this product has met all of the quality control standards defined by Bethyl Laboratories, Inc.  
Eric McIntush, PhD | Chief Scientific Officer Date: June 21, 2019

**Detection of human and mouse PKM2 by western blot.**

*Samples:* Whole cell lysate from HeLa (15 and 50  $\mu$ g), HEK293T (T; 50  $\mu$ g), Jurkat (J; 50  $\mu$ g) and mouse NIH 3T3 (M; 50  $\mu$ g) cells. *Antibody:* Affinity purified rabbit anti-PKM2 antibody A303-660A-T used at 1:1000. *Detection:* Chemiluminescence with an exposure time of 10 seconds.