

Caspase 3 Antibody

Rabbit Polyclonal

Antigen Affinity Purified

Protein ID NP_004337.2

Catalog No. A303-657A

GeneID 836

Lot No. A303-657A-1



APPLICATIONS WB, IP, IHC

SPECIES REACTIVITY Human

AMOUNT 100 µl

CONCENTRATION 1000 µg/ml

STORAGE/SHELF LIFE 2 - 8° C / 1 year from date of receipt

PHYSICAL STATE Liquid

BUFFER Tris-citrate/phosphate buffer, pH 7 to 8 containing 0.09% Sodium Azide

ISOTYPE IgG

ORIGIN USA

PRODUCTION PROCEDURES Antibody was affinity purified using an epitope specific to Caspase 3 immobilized on solid support.

The epitope recognized by A303-657A maps to a region between residue 1 and 50 of human Caspase 3, apoptosis-related cysteine peptidase using the numbering given in entry NP_004337.2 (GeneID 836).

Antibody concentration was determined by extinction coefficient: absorbance at 280 nm of 1.4 equals 1.0 mg of IgG.

APPLICATIONS Centrifuge tube to remove product from lid. Optimal working dilutions should be determined experimentally by the investigator. Prepare working dilution immediately before use.

Western Blot 1:2,000 - 1:10,000

Immunoprecipitation 2 - 10 µg/mg lysate

Immunohistochemistry 1:500 - 1:2,000. Epitope retrieval with citrate buffer pH 6.0 is recommended for FFPE tissue sections.

APPLICATION NOTES Western blot of immunoprecipitates performed using Normal Pig Serum (Cat. No. S100-020), Goat anti-Rabbit Light Chain HRP Conjugate (Cat. No. A120-113P) and 4-12% SDS-PAGE (link to IP-western blot protocol in Additional Info section below).

Western blot of lysates performed using standard western blot reagents and 4-12% SDS-PAGE.

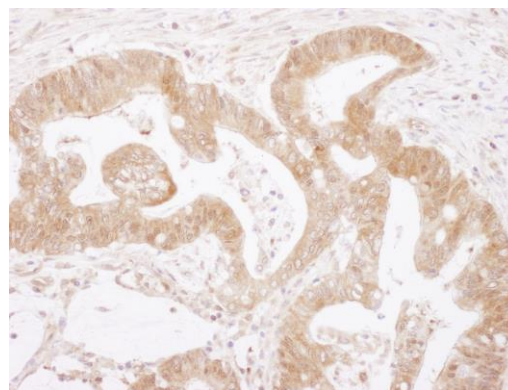
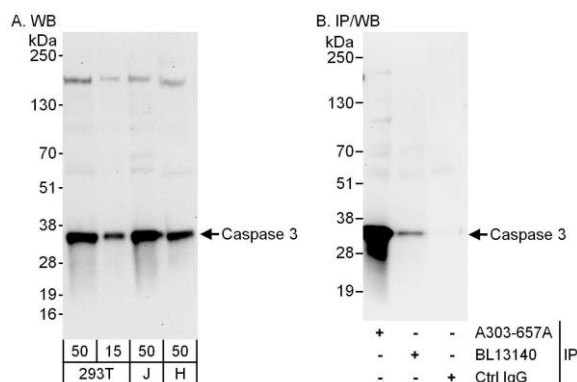
IHC HUMAN CONTROLS Breast Carcinoma, Colon Carcinoma, Ovarian Carcinoma

ADDITIONAL INFO <https://www.bethyl.com/product/A303-657A>

Use the link above to view SDS, a current list of citations, and other product specific information.

IP-western blot protocol: https://www.bethyl.com/content/protocol_IP_WB

This document certifies that this product has met all of the quality control standards defined by Bethyl Laboratories, Inc.
Eric McIntush, PhD | Chief Scientific Officer Date: June 21, 2019



Detection of human Caspase 3 by western blot and immunoprecipitation. *Samples:* Whole cell lysate from HEK293T(15 and 50 µg for WB; 1 mg for IP, 20% of IP loaded), Jurkat (J; 50 µg) and HeLa (H; 50 µg) cells. *Antibodies:* Affinity purified rabbit anti-Caspase 3 antibody A303-657A used for WB at 0.1 µg/ml (A) and 1 µg/ml (B) and used for IP at 6 µg/mg lysate. Caspase 3 was also immunoprecipitated by rabbit anti-Caspase 3 antibody BL13140, which recognizes a downstream epitope. *Detection:* Chemiluminescence with exposure times of 30 seconds (A and B).

Detection of human Caspase 3 by immunohistochemistry. *Sample:* FFPE section of human colon carcinoma. *Antibody:* Affinity purified rabbit anti- Caspase 3 (Cat. No. A303-657A Lot1) used at a dilution of 1:1,000 (1 µg/ml). *Detection:* DAB