

DPF2 Antibody

Rabbit Polyclonal

Antigen Affinity Purified

Protein ID NP_006259.1

Catalog No. A303-596A

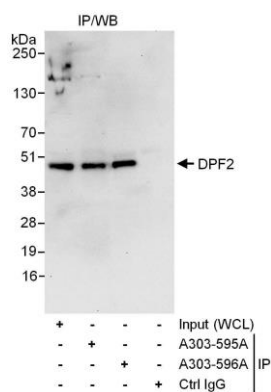
GeneID 5977

Lot No. A303-596A-1



APPLICATIONS	IP				
SPECIES REACTIVITY	Human				
PRESUMED REACTIVITY	Based on 100% sequence identity, this antibody is predicted to react with Mouse				
AMOUNT	100 µl				
CONCENTRATION	1000 µg/ml				
STORAGE/SHELF LIFE	2 - 8° C / 1 year from date of receipt				
PHYSICAL STATE	Liquid				
BUFFER	Tris-citrate/phosphate buffer, pH 7 to 8 containing 0.09% Sodium Azide				
ISOTYPE	IgG				
ORIGIN	USA				
PRODUCTION PROCEDURES	<p>Antibody was affinity purified using an epitope specific to DPF2 immobilized on solid support.</p> <p>The epitope recognized by A303-596A maps to a region between residue 341 and 391 of human D4, Zinc and Double PHD Fingers Family 2 using the numbering given in entry NP_006259.1 (GeneID 5977).</p> <p>Antibody concentration was determined by extinction coefficient: absorbance at 280 nm of 1.4 equals 1.0 mg of IgG.</p>				
APPLICATIONS	<p>Centrifuge tube to remove product from lid. Optimal working dilutions should be determined experimentally by the investigator. Prepare working dilution immediately before use.</p> <table><tr><td>Western Blot</td><td>Not recommended</td></tr><tr><td>Immunoprecipitation</td><td>2 - 10 µg/mg lysate</td></tr></table>	Western Blot	Not recommended	Immunoprecipitation	2 - 10 µg/mg lysate
Western Blot	Not recommended				
Immunoprecipitation	2 - 10 µg/mg lysate				
APPLICATION NOTES	Western blot of immunoprecipitates performed using Normal Pig Serum (Cat. No. S100-020), Goat anti-Rabbit Light Chain HRP Conjugate (Cat. No. A120-113P) and 4-20% SDS-PAGE (link to IP-western blot protocol in Additional Info section below).				
ADDITIONAL INFO	<p>https://www.bethyl.com/product/A303-596A</p> <p>Use the link above to view SDS, a current list of citations, and other product specific information. IP-western blot protocol: https://www.bethyl.com/content/protocol_IP_WB</p>				

This document certifies that this product has met all of the quality control standards defined by Bethyl Laboratories, Inc.
Eric McIntush, PhD | Chief Scientific Officer Date: June 21, 2019



Detection of human DPF2 by western blot of immunoprecipitates. *Samples:* Whole cell lysate (50 μ g for Input lane; 1 mg for IP, 20% of IP loaded) from HeLa. *Antibodies:* Affinity purified rabbit anti-DPF2 antibody A303-596A used for IP at 6 μ g/mg lysate. DPF2 was also immunoprecipitated by rabbit anti-DPF2 antibody A303-595A, which recognizes an upstream epitope. For blotting DPF2, A303-595A was used at 1 μ g/ml. *Detection:* Chemiluminescence with an exposure time of 30 seconds.