

HS1 Antibody

Rabbit Polyclonal

Antigen Affinity Purified

Protein ID NP_005326.2

Catalog No. A303-574A

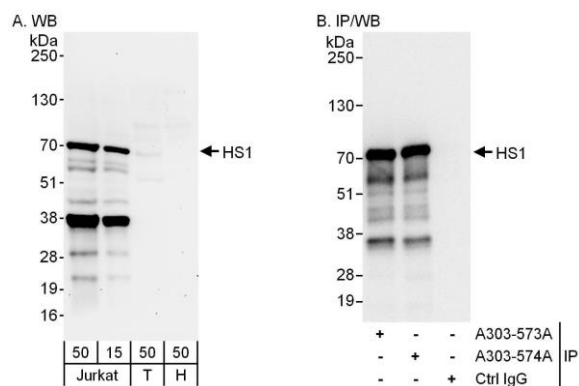
GeneID 3059

Lot No. A303-574A-1



APPLICATIONS	WB, IP				
SPECIES REACTIVITY	Human				
AMOUNT	100 µl				
CONCENTRATION	1000 µg/ml				
STORAGE/SHELF LIFE	2 - 8° C / 1 year from date of receipt				
PHYSICAL STATE	Liquid				
BUFFER	Tris-citrate/phosphate buffer, pH 7 to 8 containing 0.09% Sodium Azide				
ISOTYPE	IgG				
ORIGIN	USA				
PRODUCTION PROCEDURES	<p>Antibody was affinity purified using an epitope specific to HS1 immobilized on solid support.</p> <p>The epitope recognized by A303-574A maps to a region between residue 350 and 400 of human Hematopoietic Cell-specific Lyn Substrate 1 using the numbering given in entry NP_005326.2 (GeneID 3059).</p> <p>Antibody concentration was determined by extinction coefficient: absorbance at 280 nm of 1.4 equals 1.0 mg of IgG.</p>				
APPLICATIONS	<p>Centrifuge tube to remove product from lid. Optimal working dilutions should be determined experimentally by the investigator. Prepare working dilution immediately before use.</p> <table><tr><td>Western Blot</td><td>1:2,000 - 1:10,000</td></tr><tr><td>Immunoprecipitation</td><td>2 - 10 µg/mg lysate</td></tr></table>	Western Blot	1:2,000 - 1:10,000	Immunoprecipitation	2 - 10 µg/mg lysate
Western Blot	1:2,000 - 1:10,000				
Immunoprecipitation	2 - 10 µg/mg lysate				
APPLICATION NOTES	<p>Western blot of immunoprecipitates performed using Normal Pig Serum (Cat. No. S100-020), Goat anti-Rabbit Light Chain HRP Conjugate (Cat. No. A120-113P) and 4-20% SDS-PAGE (link to IP-western blot protocol in Additional Info section below).</p> <p>Western blot of lysates performed using standard western blot reagents and 4-20% SDS-PAGE.</p>				
ADDITIONAL INFO	<p>https://www.bethyl.com/product/A303-574A</p> <p>Use the link above to view SDS, a current list of citations, and other product specific information.</p> <p>IP-western blot protocol: https://www.bethyl.com/content/protocol_IP_WB</p>				

This document certifies that this product has met all of the quality control standards defined by Bethyl Laboratories, Inc.
Eric McIntush, PhD | Chief Scientific Officer Date: June 21, 2019



Detection of human HS1 by western blot and immunoprecipitation. *Samples:* Whole cell lysate from Jurkat (15 and 50 μg for WB; 1 mg for IP, 20% of IP loaded), HEK293T (T; 50 μg) and HeLa (H; 50 μg) cells. *Antibodies:* Affinity purified rabbit anti-HS1 antibody A303-574A used for WB at 1 $\mu\text{g}/\text{ml}$ (A) and 0.4 $\mu\text{g}/\text{ml}$ (B) and used for IP at 6 $\mu\text{g}/\text{mg}$ lysate. HS1 was also immunoprecipitated by rabbit anti-HS1 antibody A303-573A, which recognizes an upstream epitope. *Detection:* Chemiluminescence with exposure times of 3 minutes (A) and 3 seconds (B).