

# RNF31 Antibody

Rabbit Polyclonal

Antigen Affinity Purified

Protein ID NP\_060469.4

Catalog No. A303-560A

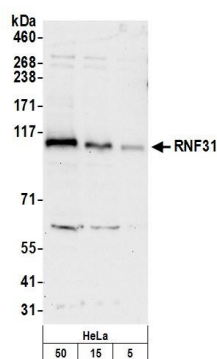
GeneID 55072

Lot No. A303-560A-3

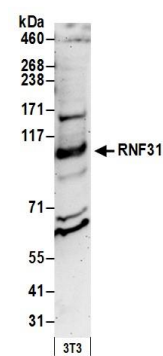


<b>APPLICATIONS</b>	WB, IP
<b>SPECIES REACTIVITY</b>	Human, Mouse
<b>AMOUNT</b>	100 µl
<b>CONCENTRATION</b>	1000 µg/ml
<b>STORAGE/SHELF LIFE</b>	2 - 8° C / 1 year from date of receipt
<b>PHYSICAL STATE</b>	Liquid
<b>BUFFER</b>	Tris-citrate/phosphate buffer, pH 7 to 8 containing 0.09% Sodium Azide
<b>ISOTYPE</b>	IgG
<b>ORIGIN</b>	USA
<b>PRODUCTION PROCEDURES</b>	<p>Antibody was affinity purified using an epitope specific to RNF31 immobilized on solid support.</p> <p>The epitope recognized by A303-560A maps to a region between residue 1022 and 1072 of human Ring Finger Protein 31 using the numbering given in entry NP_060469.4 (GeneID 55072).</p> <p>Antibody concentration was determined by extinction coefficient: absorbance at 280 nm of 1.4 equals 1.0 mg of IgG.</p>
<b>APPLICATIONS</b>	<p>Centrifuge tube to remove product from lid. Optimal working dilutions should be determined experimentally by the investigator. Prepare working dilution immediately before use.</p> <p>Western Blot 1:1,000 - 1:5,000</p> <p>Immunoprecipitation 2 - 10 µg/mg lysate</p>
<b>APPLICATION NOTES</b>	Western blot of lysates performed using standard western blot reagents and 4-8% SDS-PAGE.
<b>ADDITIONAL INFO</b>	<p><a href="https://www.bethyl.com/product/A303-560A">https://www.bethyl.com/product/A303-560A</a></p> <p>Use the link above to view SDS, a current list of citations, and other product specific information.</p>

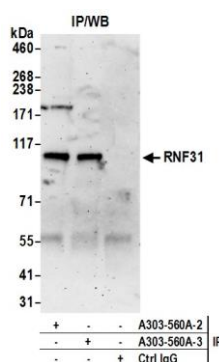
This document certifies that this product has met all of the quality control standards defined by Bethyl Laboratories, Inc.  
Eric McIntush, PhD | Chief Scientific Officer Date: June 21, 2019



**Detection of human RNF31 by western blot.** *Samples:* Whole cell lysate (5, 15 and 50 µg) from HeLa cells prepared using NETN lysis buffer. *Antibody:* Affinity purified rabbit anti-RNF31 antibody A303-560A (lot A303-560A-3) used for WB at 0.4 µg/ml. *Detection:* Chemiluminescence with an exposure time of 30 seconds.



**Detection of mouse RNF31 by western blot.** *Samples:* Whole cell lysate (50 µg) from NIH 3T3 cells prepared using NETN lysis buffer. *Antibody:* Affinity purified rabbit anti-RNF31 antibody A303-560A (lot A303-560A-3) used for WB at 0.4 µg/ml. *Detection:* Chemiluminescence with an exposure time of 3 minutes.



**Detection of human RNF31 by western blot of immunoprecipitates.** *Samples:* Whole cell lysate (0.5 or 1.0 mg per IP reaction; 20% of IP loaded) from HeLa cells prepared using NETN lysis buffer. *Antibodies:* Affinity purified rabbit anti-RNF31 antibody A303-560A (lot A303-560A-3) used for IP at 6 µg per reaction. RNF31 was also immunoprecipitated by a previous lot of this antibody (lot A303-560A-3). For blotting immunoprecipitated RNF31, A303-560A was used at 1 µg/ml. *Detection:* Chemiluminescence with an exposure time of 3 minutes.