

# USF2 Antibody

Rabbit Polyclonal

Antigen Affinity Purified

Protein ID NP\_003358.1

Catalog No. A303-541A

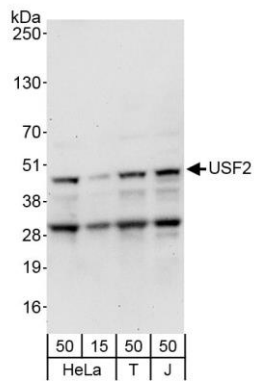
GeneID 7392

Lot No. A303-541A-1

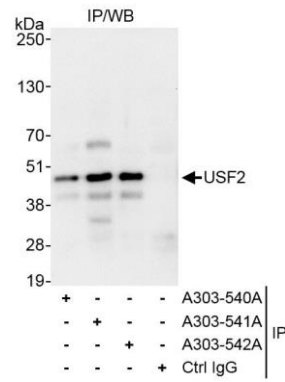


<b>APPLICATIONS</b>	WB, IP, IHC						
<b>SPECIES REACTIVITY</b>	Human, Mouse						
<b>PRESUMED REACTIVITY</b>	Based on 100% sequence identity, this antibody is predicted to react with Rat						
<b>AMOUNT</b>	100 µl						
<b>CONCENTRATION</b>	1000 µg/ml						
<b>STORAGE/SHELF LIFE</b>	2 - 8° C / 1 year from date of receipt						
<b>PHYSICAL STATE</b>	Liquid						
<b>BUFFER</b>	Tris-citrate/phosphate buffer, pH 7 to 8 containing 0.09% Sodium Azide						
<b>ISOTYPE</b>	IgG						
<b>ORIGIN</b>	USA						
<b>PRODUCTION PROCEDURES</b>	<p>Antibody was affinity purified using an epitope specific to USF2 immobilized on solid support.</p> <p>The epitope recognized by A303-541A maps to a region between residue 150 and 200 of human Upstream Transcription Factor 2 using the numbering given in entry NP_003358.1 (GeneID 7392).</p> <p>Antibody concentration was determined by extinction coefficient: absorbance at 280 nm of 1.4 equals 1.0 mg of IgG.</p>						
<b>APPLICATIONS</b>	<p>Centrifuge tube to remove product from lid. Optimal working dilutions should be determined experimentally by the investigator. Prepare working dilution immediately before use.</p> <table><tr><td>Western Blot</td><td>1:1,000 – 1:5,000</td></tr><tr><td>Immunoprecipitation</td><td>2 – 10 µg/mg lysate</td></tr><tr><td>Immunohistochemistry</td><td>1:1,000 – 1:5,000. Epitope retrieval with citrate buffer pH 6.0 is recommended for FFPE tissue sections.</td></tr></table>	Western Blot	1:1,000 – 1:5,000	Immunoprecipitation	2 – 10 µg/mg lysate	Immunohistochemistry	1:1,000 – 1:5,000. Epitope retrieval with citrate buffer pH 6.0 is recommended for FFPE tissue sections.
Western Blot	1:1,000 – 1:5,000						
Immunoprecipitation	2 – 10 µg/mg lysate						
Immunohistochemistry	1:1,000 – 1:5,000. Epitope retrieval with citrate buffer pH 6.0 is recommended for FFPE tissue sections.						
<b>APPLICATION NOTES</b>	<p>Western blot of immunoprecipitates performed using Normal Pig Serum (Cat. No. S100-020), Goat anti-Rabbit Light Chain HRP Conjugate (Cat. No. A120-113P) and 4-20% SDS-PAGE (link to IP-western blot protocol in Additional Info section below).</p> <p>Western blot of lysates performed using standard western blot reagents and 4-20% SDS-PAGE.</p>						
<b>IHC HUMAN CONTROLS</b>	Breast Carcinoma, Ovarian Carcinoma, Prostate Carcinoma						
<b>IHC MOUSE CONTROLS</b>	Hybridoma Tumor, Renal Cell Carcinoma, Teratoma						
<b>ADDITIONAL INFO</b>	<p><a href="https://www.bethyl.com/product/A303-541A">https://www.bethyl.com/product/A303-541A</a></p> <p>Use the link above to view SDS, a current list of citations, and other product specific information.</p> <p>IP-western blot protocol <a href="https://www.bethyl.com/content/protocol_IP_WB">https://www.bethyl.com/content/protocol_IP_WB</a></p>						

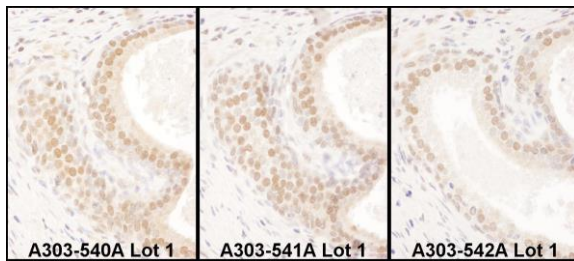
This document certifies that this product has met all of the quality control standards defined by Bethyl Laboratories, Inc.  
Eric McIntush, PhD | Chief Scientific Officer Date: November 12, 2019



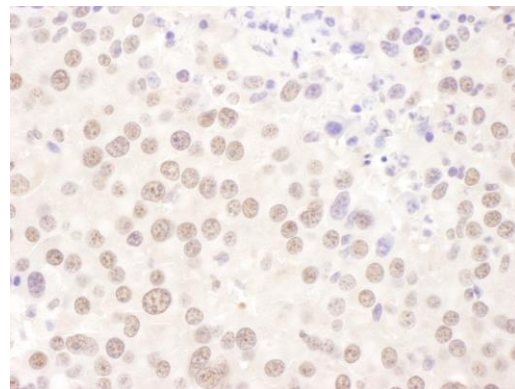
**Detection of human USF2 by western blot.** *Samples:* Whole cell lysate from HeLa (15 and 50 µg), HEK293T (T; 50 µg), and Jurkat (J; 50 µg) cells. *Antibody:* Affinity purified rabbit anti-USF2 antibody A303-541A (lot A303-541A-1) used at 0.04 µg/ml. *Detection:* Chemiluminescence with an exposure time of 30 seconds.



**Detection of human USF2 by western blot of immunoprecipitates.** *Samples:* Whole cell lysate (1 mg for IP, 20% of IP loaded) from HeLa cells. *Antibodies:* Affinity purified rabbit anti-USF2 antibody A303-541A (lot A303-541A-1) used for IP at 6 µg/mg lysate. USF2 was also immunoprecipitated by rabbit anti-USF2 antibodies A303-540A and A303-542A, which recognize other epitopes. For blotting immunoprecipitated USF2, A303-541A was used at 1.0 µg/ml. *Detection:* Chemiluminescence with exposure time of 10 seconds.



**Detection of human USF2 by immunohistochemistry.** *Samples:* FFPE serial sections of human prostate carcinoma. *Antibody:* Affinity purified rabbit anti-USF2 (Cat. No. A303-540A Lot1, left image, A303-541A Lot1, middle image and Cat. No. A303-542A Lot1, right image) used at a dilution of 1:1,000 (1 µg/ml). *Detection:* DAB. *Counterstain:* Hematoxylin (blue).



**Detection of mouse USF2 by immunohistochemistry.** *Sample:* FFPE section of mouse renal cell carcinoma. *Antibody:* Affinity purified rabbit anti-USF2 (Cat. No. A303-541A Lot1) used at a dilution of 1:1,000 (1 µg/ml). *Detection:* DAB