

USF2 Antibody

Rabbit Polyclonal

Antigen Affinity Purified

Protein ID NP_003358.1

Catalog No. A303-540A

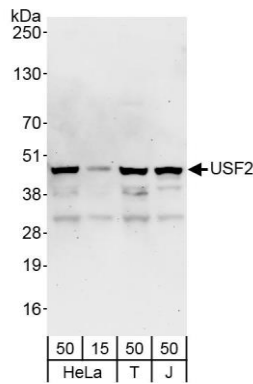
GeneID 7392

Lot No. A303-540A-1

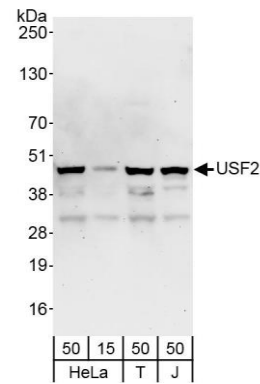


APPLICATIONS	WB, IP, IHC
SPECIES REACTIVITY	Human, Mouse
PRESUMED REACTIVITY	Based on 100% sequence identity, this antibody is predicted to react with Rat
AMOUNT	100 µl
CONCENTRATION	1000 µg/ml
STORAGE/SHELF LIFE	2 - 8° C / 1 year from date of receipt
PHYSICAL STATE	Liquid
BUFFER	Tris-citrate/phosphate buffer, pH 7 to 8 containing 0.09% Sodium Azide
ISOTYPE	IgG
ORIGIN	USA
PRODUCTION PROCEDURES	<p>Antibody was affinity purified using an epitope specific to USF2 immobilized on solid support.</p> <p>The epitope recognized by A303-540A maps to a region between residue 1 and 50 of human Upstream Transcription Factor 2 using the numbering given in entry NP_003358.1 (GeneID 7392).</p> <p>Antibody concentration was determined by extinction coefficient: absorbance at 280 nm of 1.4 equals 1.0 mg of IgG.</p>
APPLICATIONS	<p>Centrifuge tube to remove product from lid. Optimal working dilutions should be determined experimentally by the investigator. Prepare working dilution immediately before use.</p> <p>Western Blot 1:2,000 – 1:10,000</p> <p>Immunoprecipitation 2 – 10 µg/mg lysate</p> <p>Immunohistochemistry 1:1,000 – 1:5,000. Epitope retrieval with citrate buffer pH 6.0 is recommended for FFPE tissue sections.</p>
APPLICATION NOTES	<p>Western blot of immunoprecipitates performed using Normal Pig Serum (Cat. No. S100-020), Goat anti-Rabbit Light Chain HRP Conjugate (Cat. No. A120-113P) and 4-20% SDS-PAGE (link to IP-western blot protocol in Additional Info section below).</p> <p>Western blot of lysates performed using standard western blot reagents and 4-20% SDS-PAGE.</p>
IHC HUMAN CONTROLS	Breast Carcinoma, Ovarian Carcinoma, Prostate Carcinoma
IHC MOUSE CONTROLS	Hybridoma Tumor, Renal Cell Carcinoma, Teratoma
ADDITIONAL INFO	<p>https://www.bethyl.com/product/A303-540A</p> <p>Use the link above to view SDS, a current list of citations, and other product specific information.</p> <p>IP-western blot protocol https://www.bethyl.com/content/protocol_IP_WB</p>

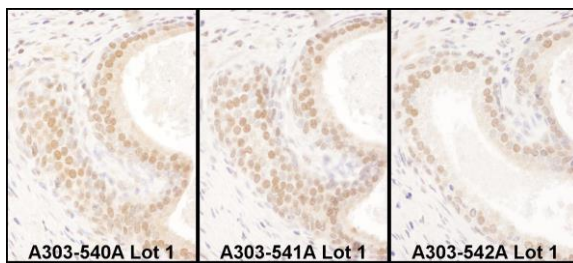
This document certifies that this product has met all of the quality control standards defined by Bethyl Laboratories, Inc.
Eric McIntush, PhD | Chief Scientific Officer Date: November 12, 2019



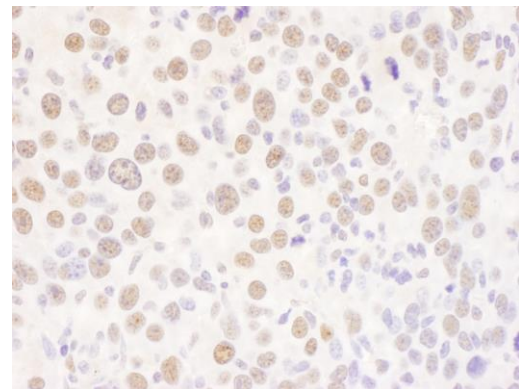
Detection of human USF2 by western blot. *Samples:* Whole cell lysate from HeLa (15 and 50 μ g), HEK293T (T; 50 μ g), and Jurkat (J; 50 μ g) cells. *Antibody:* Affinity purified rabbit anti-USF2 antibody A303-540A (lot A303-540A-1) used at 0.1 μ g/ml. *Detection:* Chemiluminescence with an exposure time of 3 minutes.



Detection of human USF2 by western blot of immunoprecipitates. *Samples:* Whole cell lysate (1 mg for IP, 20% of IP loaded) from HeLa cells. *Antibodies:* Affinity purified rabbit anti-USF2 antibody A303-540A (lot A303-540A-1) used for IP at 6 μ g/mg lysate. USF2 was also immunoprecipitated by rabbit anti-USF2 antibodies A303-541A and A303-542A, which recognize downstream epitopes. For blotting immunoprecipitated USF2, A303-540A was used at 1.0 μ g/ml. *Detection:* Chemiluminescence with exposure time of 10 seconds.



Detection of human USF2 by immunohistochemistry. *Samples:* FFPE serial sections of human prostate carcinoma. *Antibody:* Affinity purified rabbit anti-USF2 (Cat. No. A303-540A Lot1, left image, A303-541A Lot1, middle image and Cat. No. A303-542A Lot1, right image) used at a dilution of 1:1,000 (1 μ g/ml). *Detection:* DAB. *Counterstain:* Hematoxylin (blue).



Detection of mouse USF2 by immunohistochemistry. *Sample:* FFPE section of mouse renal cell carcinoma. *Antibody:* Affinity purified rabbit anti-USF2 (Cat. No. A303-540A Lot1) used at a dilution of 1:1,000 (1 μ g/ml). *Detection:* DAB