

RAP1 Antibody

Rabbit Polyclonal

Antigen Affinity Purified

Protein ID NP_061848.2

Catalog No. A303-533A

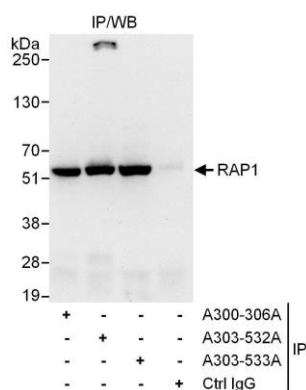
GeneID 54386

Lot No. A303-533A-1

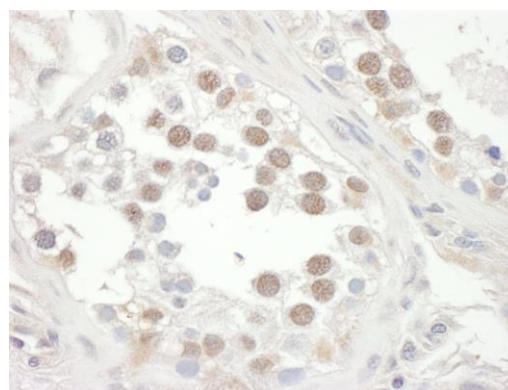


APPLICATIONS	IP, IHC						
SPECIES REACTIVITY	Human						
PRESUMED REACTIVITY	Based on 100% sequence identity, this antibody is predicted to react with Rat and Bovine						
AMOUNT	100 µl						
CONCENTRATION	1000 µg/ml						
STORAGE/SHELF LIFE	2 - 8° C / 1 year from date of receipt						
PHYSICAL STATE	Liquid						
BUFFER	Tris-citrate/phosphate buffer, pH 7 to 8 containing 0.09% Sodium Azide						
ISOTYPE	IgG						
ORIGIN	USA						
PRODUCTION PROCEDURES	<p>Antibody was affinity purified using an epitope specific to RAP1 immobilized on solid support.</p> <p>The epitope recognized by A303-533A maps to a region between residue 200 and 250 of human Repressor/Activator Protein 1 using the numbering given in entry NP_061848.2 (GeneID 54386).</p> <p>Antibody concentration was determined by extinction coefficient: absorbance at 280 nm of 1.4 equals 1.0 mg of IgG.</p>						
APPLICATIONS	<p>Centrifuge tube to remove product from lid. Optimal working dilutions should be determined experimentally by the investigator. Prepare working dilution immediately before use.</p> <table><tr><td>Western Blot</td><td>Not recommended</td></tr><tr><td>Immunoprecipitation</td><td>2 - 10 µg/mg lysate</td></tr><tr><td>Immunohistochemistry</td><td>1:1,000 - 1:5,000. Epitope retrieval with citrate buffer pH 6.0 is recommended for FFPE tissue sections.</td></tr></table>	Western Blot	Not recommended	Immunoprecipitation	2 - 10 µg/mg lysate	Immunohistochemistry	1:1,000 - 1:5,000. Epitope retrieval with citrate buffer pH 6.0 is recommended for FFPE tissue sections.
Western Blot	Not recommended						
Immunoprecipitation	2 - 10 µg/mg lysate						
Immunohistochemistry	1:1,000 - 1:5,000. Epitope retrieval with citrate buffer pH 6.0 is recommended for FFPE tissue sections.						
APPLICATION NOTES	Western blot of immunoprecipitates performed using Normal Pig Serum (Cat. No. S100-020), Goat anti-Rabbit Light Chain HRP Conjugate (Cat. No. A120-113P) and 4-20% SDS-PAGE (link to IP-western blot protocol in Additional Info section below).						
IHC HUMAN CONTROLS	Testis						
ADDITIONAL INFO	<p>https://www.bethyl.com/product/A303-533A</p> <p>Use the link above to view SDS, a current list of citations, and other product specific information.</p> <p>IP-western blot protocol: https://www.bethyl.com/content/protocol_IP_WB</p>						

This document certifies that this product has met all of the quality control standards defined by Bethyl Laboratories, Inc.
Eric McIntush, PhD | Chief Scientific Officer Date: June 21, 2019



Detection of human RAP1 by western blot of immunoprecipitates. *Samples:* Whole cell lysate from HeLa (1 mg for IP, 20% of IP loaded) cells. *Antibodies:* Affinity purified rabbit anti-RAP1 antibody A303-533A used for IP at 6 $\mu\text{g}/\text{mg}$ lysate. RAP1 was also immunoprecipitated by rabbit anti-RAP1 antibodies A303-532A, which recognizes an upstream epitope, and A300-306A which is generated against full-length recombinant human RAP1. For blotting immunoprecipitated RAP1, A303-532A was used at 1 $\mu\text{g}/\text{ml}$. *Detection:* Chemiluminescence with an exposure time of 30 seconds.



Detection of human RAP1 by immunohistochemistry. *Sample:* FFPE section of human testis. *Antibody:* Affinity purified rabbit anti-RAP1 (Cat. No. A303-533A Lot1) used at a dilution of 1:5,000 (0.2 $\mu\text{g}/\text{ml}$). *Detection:* DAB. *Counterstain:* Hematoxylin (blue).