

PABPN1 Antibody

Rabbit Polyclonal

Antigen Affinity Purified

Protein ID NP_004634.1

Catalog No. A303-523A

GeneID 8106

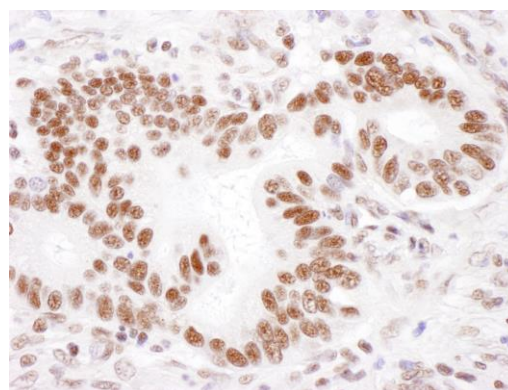
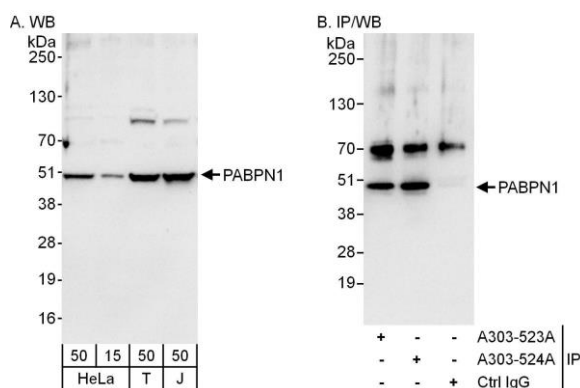
Lot No. A303-523A-1



APPLICATIONS	WB, IP, IHC						
SPECIES REACTIVITY	Human, Mouse						
PRESUMED REACTIVITY	Based on 100% sequence identity, this antibody is predicted to react with Bovine						
AMOUNT	100 µl						
CONCENTRATION	200 µg/ml						
STORAGE/SHELF LIFE	2 - 8° C / 1 year from date of receipt						
PHYSICAL STATE	Liquid						
BUFFER	Tris-buffered Saline containing 0.1% BSA and 0.09% Sodium Azide						
ISOTYPE	IgG						
ORIGIN	USA						
PRODUCTION PROCEDURES	<p>Antibody was affinity purified using an epitope specific to PABPN1 immobilized on solid support.</p> <p>The epitope recognized by A303-523A maps to a region between residue 1 and 50 of human Poly(A) Binding Protein, Nuclear 1 using the numbering given in entry NP_004634.1 (GeneID 8106).</p> <p>Antibody concentration was determined by extinction coefficient: absorbance at 280 nm of 1.4 equals 1.0 mg of IgG.</p>						
APPLICATIONS	<p>Centrifuge tube to remove product from lid. Optimal working dilutions should be determined experimentally by the investigator. Prepare working dilution immediately before use.</p> <table><tr><td>Western Blot</td><td>1:2,000 - 1:10,000</td></tr><tr><td>Immunoprecipitation</td><td>2 - 10 µg/mg lysate</td></tr><tr><td>Immunohistochemistry</td><td>1:500 - 1:2,000. Epitope retrieval with citrate buffer pH 6.0 is recommended for FFPE tissue sections.</td></tr></table>	Western Blot	1:2,000 - 1:10,000	Immunoprecipitation	2 - 10 µg/mg lysate	Immunohistochemistry	1:500 - 1:2,000. Epitope retrieval with citrate buffer pH 6.0 is recommended for FFPE tissue sections.
Western Blot	1:2,000 - 1:10,000						
Immunoprecipitation	2 - 10 µg/mg lysate						
Immunohistochemistry	1:500 - 1:2,000. Epitope retrieval with citrate buffer pH 6.0 is recommended for FFPE tissue sections.						
APPLICATION NOTES	<p>Western blot of immunoprecipitates performed using Normal Pig Serum (Cat. No. S100-020), Goat anti-Rabbit Light Chain HRP Conjugate (Cat. No. A120-113P) and 4-20% SDS-PAGE (link to IP-western blot protocol in Additional Info section below).</p> <p>Western blot of lysates performed using standard western blot reagents and 4-20% SDS-PAGE.</p>						
IHC HUMAN CONTROLS	Breast Carcinoma, Colon Carcinoma, Ovarian Carcinoma, Prostate Carcinoma, Stomach Adenocarcinoma, Testicular Seminoma						
IHC MOUSE CONTROLS	Hybridoma Tumor, Renal Cell Carcinoma, Teratoma						
ADDITIONAL INFO	<p>https://www.bethyl.com/product/A303-523A</p> <p>Use the link above to view SDS, a current list of citations, and other product specific information.</p> <p>IP-western blot protocol: https://www.bethyl.com/content/protocol_IP_WB</p>						

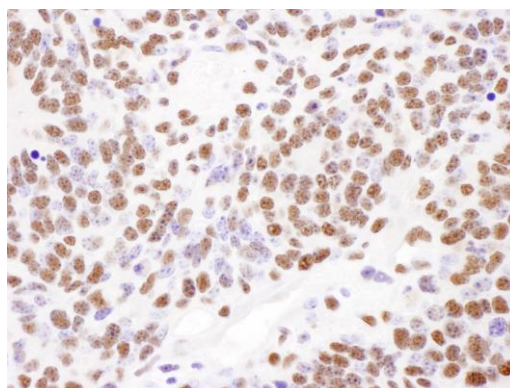
This document certifies that this product has met all of the quality control standards defined by Bethyl Laboratories, Inc.
Eric McIntush, PhD | Chief Scientific Officer

Date: June 21, 2019



Detection of human PABPN1 by western blot and immunoprecipitation. *Samples:* Whole cell lysate from HeLa (15 and 50 µg for WB; 1 mg for IP, 20% of IP loaded), HEK293T (T; 50 µg) and Jurkat (J; 50 µg) cells. *Antibodies:* Affinity purified rabbit anti-PABPN1 antibody A303-523A used for WB at 0.04 µg/ml (A) and 0.4 µg/ml (B) and used for IP at 6 µg/mg lysate. PABPN1 was also immunoprecipitated by rabbit anti-PABPN1 antibody A303-524A, which recognizes a downstream epitope. *Detection:* Chemiluminescence with exposure times of 3 seconds (A) and 1 second (B).

Detection of human PABPN1 by immunohistochemistry. *Sample:* FFPE section of human stomach carcinoma. *Antibody:* Affinity purified rabbit anti-PABPN1 (Cat. No. A303-523A Lot1) used at a dilution of 1:1,000 (0.2µg/ml). *Detection:* DAB. *Counterstain:* hematoxylin (blue).



Detection of mouse PABPN1 by immunohistochemistry. *Sample:* FFPE section of mouse teratoma. *Antibody:* Affinity purified rabbit anti-PABPN1 (Cat. No. A303-523A Lot1) used at a dilution of 1:200 (1 µg/ml). *Detection:* DAB