

# c-Ski Antibody

Rabbit Polyclonal

Antigen Affinity Purified

Protein ID NP\_003027.1

Catalog No. A303-518A

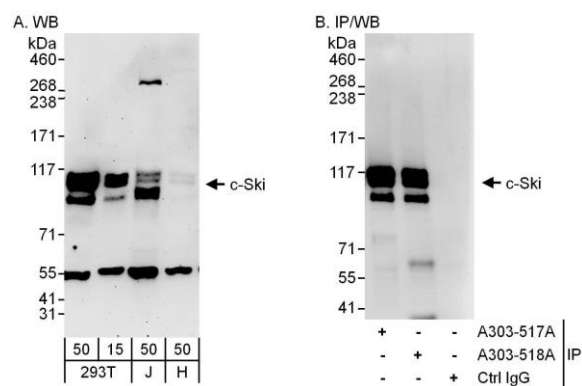
GeneID 6497

Lot No. A303-518A-1



|                       |  |
|-----------------------|--|
| APPLICATIONS          | WB, IP   |
| SPECIES REACTIVITY    | Human  |
| AMOUNT                | 100 µl   |
| CONCENTRATION         | 200 µg/ml  |
| STORAGE/SHELF LIFE    | 2 – 8° C / 1 year from date of receipt   |
| PHYSICAL STATE        | Liquid   |
| BUFFER                | Tris-buffered Saline containing 0.1% BSA and 0.09% Sodium Azide  |
| ISOTYPE               | IgG  |
| ORIGIN                | USA  |
| PRODUCTION PROCEDURES | <p>Antibody was affinity purified using an epitope specific to c-Ski immobilized on solid support.</p> <p>The epitope recognized by A303-518A maps to a region between residue 678 and 728 of human v-Ski Sarcoma Viral Oncogene Homolog using the numbering given in entry NP_003027.1 (GeneID 6497).</p> <p>Antibody concentration was determined by extinction coefficient: absorbance at 280 nm of 1.4 equals 1.0 mg of IgG.</p> |
| APPLICATIONS          | <p>Centrifuge tube to remove product from lid. Optimal working dilutions should be determined experimentally by the investigator. Prepare working dilution immediately before use.</p> <p>Western Blot 1:2,000 – 1:10,000</p> <p>Immunoprecipitation 2 – 10 µg/mg lysate</p>   |
| APPLICATION NOTES     | <p>Western blot of immunoprecipitates performed using Normal Pig Serum (Cat. No. S100-020), Goat anti-Rabbit Light Chain HRP Conjugate (Cat. No. A120-113P) and 4-8% SDS-PAGE (link to IP-western blot protocol in Additional Info section below).</p> <p>Western blot of lysates performed using standard western blot reagents and 4-8% SDS-PAGE.</p>  |
| ADDITIONAL INFO       | <p><a href="https://www.bethyl.com/product/A303-518A">https://www.bethyl.com/product/A303-518A</a></p> <p>Use the link above to view SDS, a current list of citations, and other product specific information.</p> <p>IP-western blot protocol: <a href="https://www.bethyl.com/content/protocol_IP_WB">https://www.bethyl.com/content/protocol_IP_WB</a></p>  |

This document certifies that this product has met all of the quality control standards defined by Bethyl Laboratories, Inc.  
Eric McIntush, PhD | Chief Scientific Officer Date: June 21, 2019



**Detection of human c-Ski by western blot and immunoprecipitation.** *Samples:* Whole cell lysate from HEK293T (15 and 50  $\mu$ g for WB; 1 mg for IP, 20% of IP loaded), Jurkat (J; 50  $\mu$ g) and HeLa (H; 50  $\mu$ g) cells. *Antibodies:* Affinity purified rabbit anti-c-Ski antibody A303-518A used for WB at 0.04  $\mu$ g/ml (A) and 1  $\mu$ g/ml (B) and used for IP at 6  $\mu$ g/mg lysate. c-Ski was also immunoprecipitated by rabbit anti-c-Ski antibody A303-517A, which recognizes an upstream epitope. *Detection:* Chemiluminescence with exposure times of 3 minutes (A) and 10 seconds (B).