

# TAF1 Antibody

Rabbit Polyclonal

Antigen Affinity Purified

Protein ID NP\_620278.1

Catalog No. A303-504A

GeneID 6872

Lot No. A303-504A-3



**APPLICATIONS** WB, IP, IHC

**SPECIES REACTIVITY** Human

**AMOUNT** 100 µl

**CONCENTRATION** 1000 µg/ml

**STORAGE/SHELF LIFE** 2 – 8° C / 1 year from date of receipt

**PHYSICAL STATE** Liquid

**BUFFER** Tris-citrate/phosphate buffer, pH 7 to 8 containing 0.09% Sodium Azide

**ISOTYPE** IgG

**ORIGIN** USA

**PRODUCTION PROCEDURES** Antibody was affinity purified using an epitope specific to TAF1 immobilized on solid support.

The epitope recognized by A303-504A maps to a region between residue 1750 and 1800 of human Transcription Initiation Factor TFIID Subunit 1 using the numbering given in entry NP\_620278.1 (GeneID 6872).

Antibody concentration was determined by extinction coefficient: absorbance at 280 nm of 1.4 equals 1.0 mg of IgG.

**APPLICATIONS** Centrifuge tube to remove product from lid. Optimal working dilutions should be determined experimentally by the investigator. Prepare working dilution immediately before use.

Western Blot 1:10,000 – 1:25,000

Immunoprecipitation 2 – 10 µg/mg lysate

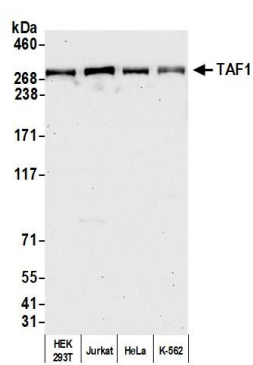
Immunohistochemistry 1:1,000 to 1:5,000. Epitope retrieval with citrate buffer pH6.0 is recommended for FFPE tissue sections.

**IHC HUMAN CONTROLS** Bladder Cell Carcinoma, Colon Carcinoma, Linitis Plastica Stomach Cancer, Testicular Seminoma, Testis

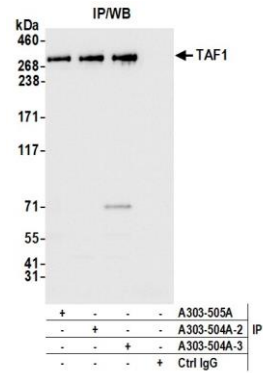
**ADDITIONAL INFO** <https://www.bethyl.com/product/A303-504A>

Use the link above to view SDS, a current list of citations, and other product specific information.  
IP-western blot protocol: [https://www.bethyl.com/content/protocol\\_IP\\_WB](https://www.bethyl.com/content/protocol_IP_WB)

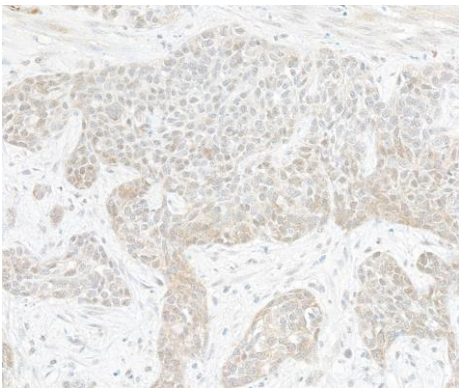
This document certifies that this product has met all of the quality control standards defined by Bethyl Laboratories, Inc.  
Brian McWilliams, PhD Date: March 16, 2021



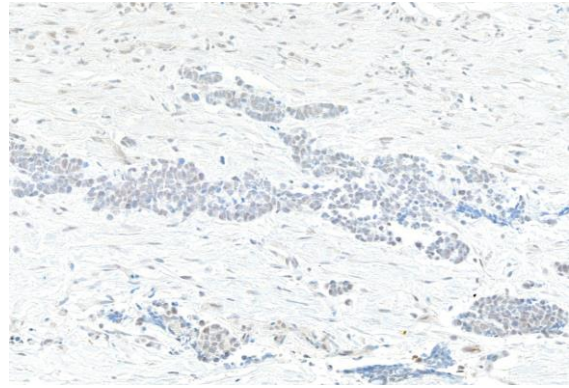
**Detection of human TAF1 by western blot.** *Samples:* Whole cell lysate (50 µg) from HEK293T, Jurkat, HeLa, and K-562 cells prepared using NETN lysis buffer. *Antibody:* Affinity purified rabbit anti-TAF1 antibody A303-504A lot 3 used for WB at 0.04 µg/ml. *Detection:* Chemiluminescence with an exposure time of 30 seconds.



**Detection of human TAF1 by western blot of immunoprecipitates.** *Samples:* Whole cell lysate (1.0 mg per IP reaction; 20% of IP loaded) from HEK293T cells prepared using NETN lysis buffer. *Antibodies:* Affinity purified rabbit anti-TAF1 antibody A303-504A lot 3 used for IP at 6 µg per reaction. TAF1 was also immunoprecipitated by a previous lot of this antibody (A303-504A lot 2) and rabbit anti-TAF1 antibody (A303-505A). For blotting immunoprecipitated TAF1, A303-504A was used at 0.04 µg/ml. *Detection:* Chemiluminescence with an exposure time of 3 seconds.



**Detection of human TAF1 by immunohistochemistry.** *Sample:* FFPE section of lung carcinoma. *Antibody:* Rabbit anti-TAF1 antibody (A303-504A lot 3) used at 1:5000 (0.2 µg/ml). *Secondary:* HRP-conjugated goat anti-rabbit IgG (A120-501P). *Substrate:* DAB.



**Detection of human TAF1 by immunohistochemistry.** *Sample:* FFPE section of bladder carcinoma. *Antibody:* Rabbit anti-TAF1 antibody (A303-504A lot 3) used at 1:1000 (1 µg/ml). *Secondary:* HRP-conjugated goat anti-rabbit IgG (A120-501P). *Substrate:* DAB.