

# GATA3 Antibody

Rabbit Polyclonal

Antigen Affinity Purified

Protein ID NP\_002042.1

Catalog No. A303-502A

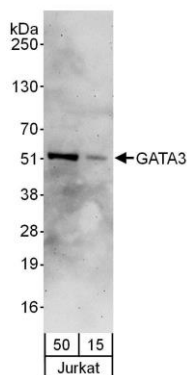
GeneID 2625

Lot No. A303-502A-1

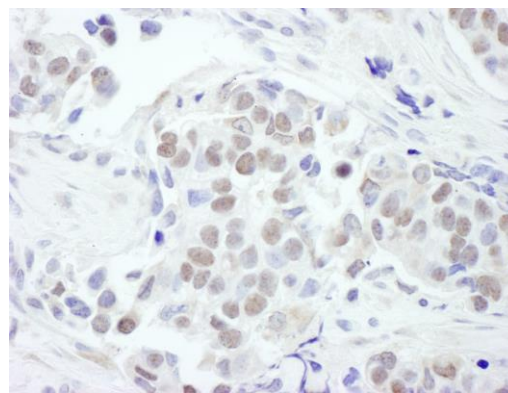


|                              |  |              |                 |                     |                 |                      |  |
|------------------------------|--|--------------|-----------------|---------------------|-----------------|----------------------|--|
| <b>APPLICATIONS</b>          | WB, IHC  |              |                 |                     |                 |                      |  |
| <b>SPECIES REACTIVITY</b>    | Human  |              |                 |                     |                 |                      |  |
| <b>PRESUMED REACTIVITY</b>   | Based on 100% sequence identity, this antibody is predicted to react with Mouse  |              |                 |                     |                 |                      |  |
| <b>AMOUNT</b>                | 100 µl   |              |                 |                     |                 |                      |  |
| <b>CONCENTRATION</b>         | 1000 µg/ml   |              |                 |                     |                 |                      |  |
| <b>STORAGE/SHELF LIFE</b>    | 2 - 8° C / 1 year from date of receipt   |              |                 |                     |                 |                      |  |
| <b>PHYSICAL STATE</b>        | Liquid   |              |                 |                     |                 |                      |  |
| <b>BUFFER</b>                | Tris-citrate/phosphate buffer, pH 7 to 8 containing 0.09% Sodium Azide   |              |                 |                     |                 |                      |  |
| <b>ISOTYPE</b>               | IgG  |              |                 |                     |                 |                      |  |
| <b>ORIGIN</b>                | USA  |              |                 |                     |                 |                      |  |
| <b>PRODUCTION PROCEDURES</b> | <p>Antibody was affinity purified using an epitope specific to GATA3 immobilized on solid support.</p> <p>The epitope recognized by A303-502A maps to a region between residue 150 and 200 of human GATA Binding Protein 3 using the numbering given in entry NP_002042.1 (GeneID 2625).</p> <p>Antibody concentration was determined by extinction coefficient: absorbance at 280 nm of 1.4 equals 1.0 mg of IgG.</p>   |              |                 |                     |                 |                      |  |
| <b>APPLICATIONS</b>          | <p>Centrifuge tube to remove product from lid. Optimal working dilutions should be determined experimentally by the investigator. Prepare working dilution immediately before use.</p> <table><tr><td>Western Blot</td><td>1:500 - 1:2,500</td></tr><tr><td>Immunoprecipitation</td><td>Not recommended</td></tr><tr><td>Immunohistochemistry</td><td>1:500 - 1:2,000. Epitope retrieval with citrate buffer pH 6.0 is recommended for FFPE tissue sections.</td></tr></table> | Western Blot | 1:500 - 1:2,500 | Immunoprecipitation | Not recommended | Immunohistochemistry | 1:500 - 1:2,000. Epitope retrieval with citrate buffer pH 6.0 is recommended for FFPE tissue sections. |
| Western Blot                 | 1:500 - 1:2,500  |              |                 |                     |                 |                      |  |
| Immunoprecipitation          | Not recommended  |              |                 |                     |                 |                      |  |
| Immunohistochemistry         | 1:500 - 1:2,000. Epitope retrieval with citrate buffer pH 6.0 is recommended for FFPE tissue sections.   |              |                 |                     |                 |                      |  |
| <b>APPLICATION NOTES</b>     | Western blot of lysates performed using standard western blot reagents and 4-20% SDS-PAGE.   |              |                 |                     |                 |                      |  |
| <b>IHC HUMAN CONTROLS</b>    | Breast Carcinoma   |              |                 |                     |                 |                      |  |
| <b>ADDITIONAL INFO</b>       | <p><a href="https://www.bethyl.com/product/A303-502A">https://www.bethyl.com/product/A303-502A</a></p> <p>Use the link above to view SDS, a current list of citations, and other product specific information.</p>   |              |                 |                     |                 |                      |  |

This document certifies that this product has met all of the quality control standards defined by Bethyl Laboratories, Inc.  
Eric McIntush, PhD | Chief Scientific Officer Date: June 21, 2019



**Detection of human GATA3 by western blot.** *Samples:* Whole cell lysate (15 and 50  $\mu$ g) from Jurkat cells. *Antibodies:* Affinity purified rabbit anti-GATA3 antibody A303-502A used for WB at 0.4  $\mu$ g/ml. *Detection:* Chemiluminescence with an exposure time of 3 minutes.



**Detection of human GATA3 by immunohistochemistry.** *Sample:* FFPE section of human breast carcinoma. *Antibody:* Affinity purified rabbit anti-GATA3 (Cat. No. A303-502A Lot1) used at a dilution of 1:1,000 (1  $\mu$ g/ml). *Detection:* DAB