

Cyclin T1 Antibody

Rabbit Polyclonal

Antigen Affinity Purified

Protein ID NP_001231.2

Catalog No. A303-499A

GeneID 904

Lot No. A303-499A-1



APPLICATIONS WB, IP, IHC

SPECIES REACTIVITY Human

PRESUMED REACTIVITY Based on 100% sequence identity, this antibody is predicted to react with Chimpanzee

AMOUNT 100 µl

CONCENTRATION 200 µg/ml

STORAGE/SHELF LIFE 2 - 8° C / 1 year from date of receipt

PHYSICAL STATE Liquid

BUFFER Tris-buffered Saline containing 0.1% BSA and 0.09% Sodium Azide

ISOTYPE IgG

ORIGIN USA

PRODUCTION PROCEDURES Antibody was affinity purified using an epitope specific to Cyclin T1 immobilized on solid support.

The epitope recognized by A303-499A maps to a region between residue 625 and 675 of human Cyclin T1 using the numbering given in entry NP_001231.2 (GeneID 904).

Antibody concentration was determined by extinction coefficient: absorbance at 280 nm of 1.4 equals 1.0 mg of IgG.

APPLICATIONS Centrifuge tube to remove product from lid. Optimal working dilutions should be determined experimentally by the investigator. Prepare working dilution immediately before use.

Western Blot 1:2,000 - 1:10,000

Immunoprecipitation 2 - 10 µg/mg lysate

Immunohistochemistry 1:100 - 1:500. Epitope retrieval with citrate buffer pH 6.0 is recommended for FFPE tissue sections.

APPLICATION NOTES Western blot of immunoprecipitates performed using Normal Pig Serum (Cat. No. S100-020), Goat anti-Rabbit Light Chain HRP Conjugate (Cat. No. A120-113P) and 4-8% SDS-PAGE (link to IP-western blot protocol in Additional Info section below).

Western blot of lysates performed using standard western blot reagents and 4-8% SDS-PAGE.

IHC HUMAN CONTROLS Breast Carcinoma

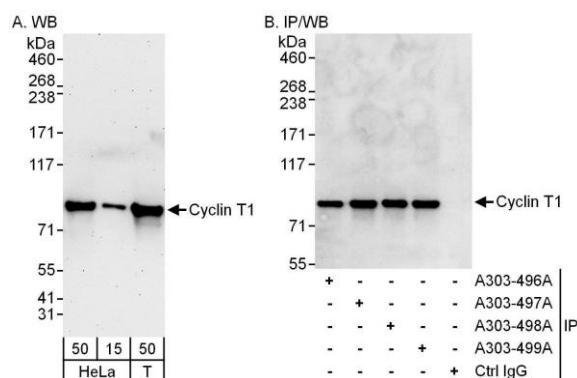
ADDITIONAL INFO <https://www.bethyl.com/product/A303-499A>

Use the link above to view SDS, a current list of citations, and other product specific information.

IP-western blot protocol: https://www.bethyl.com/content/protocol_IP_WB

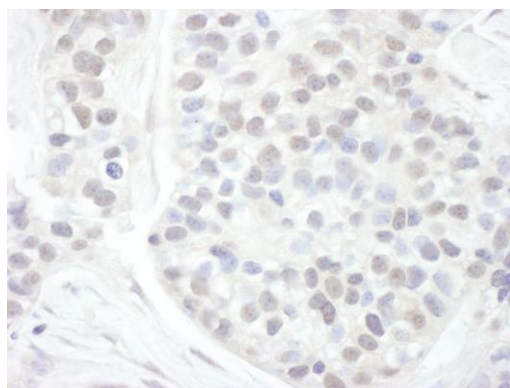
This document certifies that this product has met all of the quality control standards defined by Bethyl Laboratories, Inc.
Eric McIntush, PhD | Chief Scientific Officer

Date: June 21, 2019



Detection of human Cyclin T1 by western blot and immunoprecipitation.

Samples: Whole cell lysate from HeLa (15 and 50 μ g for WB; 1 mg for IP, 20% of IP loaded) and HEK293T (T; 50 μ g) cells. *Antibodies:* Affinity purified rabbit anti-Cyclin T1 antibody A303-499A used for WB at 0.04 μ g/ml (A) and 1 μ g/ml (B) and used for IP at 6 μ g/mg lysate. Cyclin T1 was also immunoprecipitated by rabbit anti-Cyclin T1 antibodies A303-496A, A303-497A and A303-498A, which recognize upstream epitopes. *Detection:* Chemiluminescence with exposure times of 3 minutes (A) and 3 seconds (B).



Detection of human Cyclin T1 by immunohistochemistry.

Sample: FFPE section of human breast carcinoma. *Antibody:* Affinity purified rabbit anti-Cyclin T1 (Cat. No. A303-499A Lot1) used at a dilution of 1:200 (1 μ g/ml). *Detection:* DAB