

Cyclin T1 Antibody

Rabbit Polyclonal

Antigen Affinity Purified

Protein ID NP_001231.2

Catalog No. A303-497A

GeneID 904

Lot No. A303-497A-1



APPLICATIONS	WB, IP, IHC
SPECIES REACTIVITY	Human
PRESUMED REACTIVITY	Based on 100% sequence identity, this antibody is predicted to react with Chimpanzee
AMOUNT	100 µl
CONCENTRATION	200 µg/ml
STORAGE/SHELF LIFE	2 - 8° C / 1 year from date of receipt
PHYSICAL STATE	Liquid
BUFFER	Tris-buffered Saline containing 0.1% BSA and 0.09% Sodium Azide
ISOTYPE	IgG
ORIGIN	USA
PRODUCTION PROCEDURES	Antibody was affinity purified using an epitope specific to Cyclin T1 immobilized on solid support.

The epitope recognized by A303-497A maps to a region between residue 325 and 375 of human Cyclin T1 using the numbering given in entry NP_001231.2 (GeneID 904).

Antibody concentration was determined by extinction coefficient: absorbance at 280 nm of 1.4 equals 1.0 mg of IgG.

APPLICATIONS Centrifuge tube to remove product from lid. Optimal working dilutions should be determined experimentally by the investigator. Prepare working dilution immediately before use.

Western Blot 1:2,000 – 1:10,000

Immunoprecipitation 2 – 10 µg/mg lysate

Immunohistochemistry 1:100 – 1:500. Epitope retrieval with citrate buffer pH 6.0 is recommended for FFPE tissue sections.

APPLICATION NOTES Western blot of immunoprecipitates performed using Normal Pig Serum (Cat. No. S100-020), Goat anti-Rabbit Light Chain HRP Conjugate (Cat. No. A120-113P) and 4-8% SDS-PAGE (link to IP-western blot protocol in Additional Info section below).

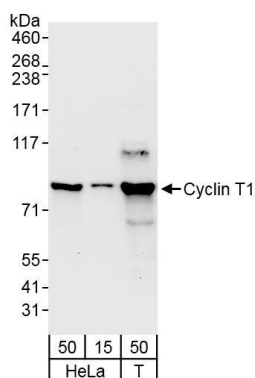
Western blot of lysates performed using standard western blot reagents and 4-8% SDS-PAGE.

IHC HUMAN CONTROLS Breast Carcinoma, Ovarian Carcinoma, Prostate Carcinoma

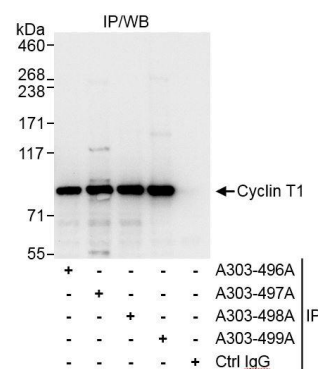
ADDITIONAL INFO <https://www.bethyl.com/product/A303-497A>

Use the link above to view SDS, a current list of citations, and other product specific information. IP-western blot protocol https://www.bethyl.com/content/protocol_IP_WB

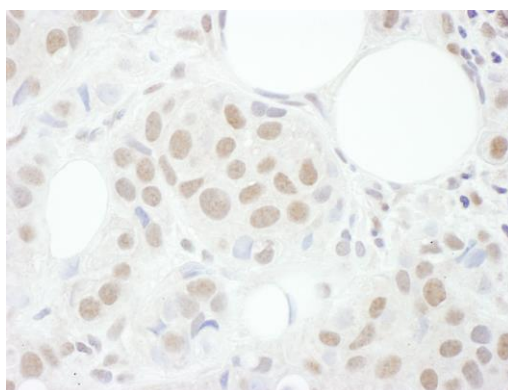
This document certifies that this product has met all of the quality control standards defined by Bethyl Laboratories, Inc.
Eric McIntush, PhD | Chief Scientific Officer Date: November 12, 2019



Detection of human Cyclin T1 by western blot. *Samples:* Whole cell lysate from HeLa (15 and 50 µg) and HEK293T (T; 50 µg) cells. *Antibody:* Affinity purified rabbit anti-Cyclin T1 antibody A303-497A (lot A303-497A-1) used at 0.04 µg/ml. *Detection:* Chemiluminescence with an exposure time of 30 seconds.



Detection of human Cyclin T1 by western blot of immunoprecipitates. *Samples:* Whole cell lysate (1 mg for IP, 20% of IP loaded) from HeLa cells. *Antibodies:* Affinity purified rabbit anti-Cyclin T1 antibody A303-497A (lot A303-497A-1) used for IP at 6 µg/mg lysate. Cyclin T1 was also immunoprecipitated by rabbit anti-Cyclin T1 antibodies A303-496A, A303-498A and A303-499A, which recognize other epitopes. For blotting immunoprecipitated Cyclin T1, A303-497A was used at 1.0 µg/ml. *Detection:* Chemiluminescence with exposure time of 3 seconds.



Detection of human Cyclin T1 by immunohistochemistry.
Sample: FFPE section of human breast carcinoma.
Antibody: Affinity purified rabbit anti-Cyclin T1 (Cat. No. A303-497A Lot1) used at a dilution of 1:200 (1 µg/ml).
Detection: DAB