

STAT5a Antibody

Rabbit Polyclonal

Antigen Affinity Purified

Protein ID NP_003143.2

Catalog No. A303-494A

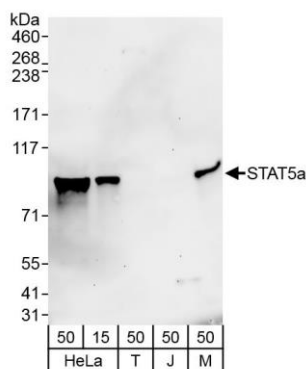
GeneID 6776

Lot No. A303-494A-1



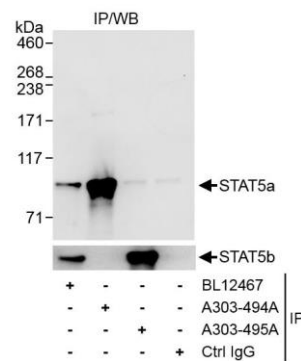
APPLICATIONS	WB, IP, IHC
SPECIES REACTIVITY	Human
AMOUNT	100 µl
CONCENTRATION	200 µg/ml
STORAGE/SHELF LIFE	2 – 8° C / 1 year from date of receipt
PHYSICAL STATE	Liquid
BUFFER	Tris-buffered Saline containing 0.1% BSA and 0.09% Sodium Azide
ISOTYPE	IgG
ORIGIN	USA
PRODUCTION PROCEDURES	<p>Antibody was affinity purified using an epitope specific to STAT5a immobilized on solid support.</p> <p>The epitope recognized by A303-494A maps to a region between residue 744 and 794 of human Signal Transducer and Activator of Transcription 5A using the numbering given in entry NP_003143.2 (GeneID 6776).</p> <p>Antibody concentration was determined by extinction coefficient: absorbance at 280 nm of 1.4 equals 1.0 mg of IgG.</p>
APPLICATIONS	<p>Centrifuge tube to remove product from lid. Optimal working dilutions should be determined experimentally by the investigator. Prepare working dilution immediately before use.</p> <p>Western Blot 1:2,000 – 1:10,000</p> <p>Immunoprecipitation 2 – 10 µg/mg lysate</p> <p>Immunohistochemistry 1:100 – 1:500. Epitope retrieval with citrate buffer pH 6.0 is recommended for FFPE tissue sections.</p>
APPLICATION NOTES	<p>Western blot of immunoprecipitates performed using Normal Pig Serum (Cat. No. S100-020), Goat anti-Rabbit Light Chain HRP Conjugate (Cat. No. A120-113P) and 4-8% SDS-PAGE (link to IP-western blot protocol in Additional Info section below).</p> <p>Western blot of lysates performed using standard western blot reagents and 4-8% SDS-PAGE.</p>
ADDITIONAL INFO	<p>https://www.bethyl.com/product/A303-494A</p> <p>Use the link above to view SDS, a current list of citations, and other product specific information. IP-western blot protocol https://www.bethyl.com/content/protocol_IP_WB</p>

This document certifies that this product has met all of the quality control standards defined by Bethyl Laboratories, Inc.
Eric McIntush, PhD | Chief Scientific Officer Date: November 12, 2019



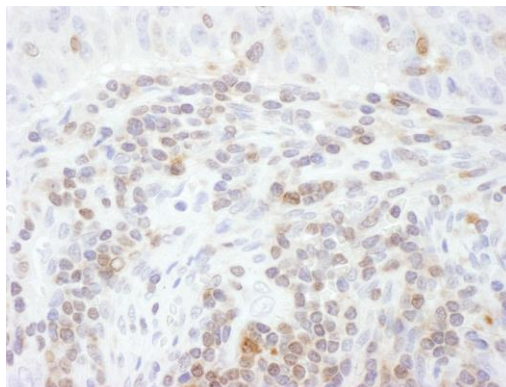
Detection of human and mouse STAT5a by western blot.

Samples: Whole cell lysate from HeLa (15 and 50 µg), HEK293T (T; 50 µg), Jurkat (J; 50 µg), and mouse NIH 3T3 (M; 50 µg) cells. *Antibody:* Affinity purified rabbit anti-STAT5a antibody A303-494A (lot A303-494A-1) used at 0.04 µg/ml. *Detection:* Chemiluminescence with an exposure time of 3 minutes.



Detection of human STAT5a by western blot of immunoprecipitates.

Samples: Whole cell lysate (1 mg for IP, 20% of IP loaded) from HeLa cells. *Antibodies:* Affinity purified rabbit anti-STAT5a antibody A303-494A (lot A303-494A-1) used for IP at 6 µg/mg lysate. STAT5a was also immunoprecipitated by rabbit anti-STAT5a/STAT5b antibody BL12467, which recognizes an upstream epitope. STAT5b was immunoprecipitated by rabbit anti-STAT5a/STAT5b antibody BL12467 and by rabbit anti-STAT5b antibody A303-495A, which was also used to blot STAT5b (lower panel). For blotting immunoprecipitated STAT5a, A303-494A was used at 1.0 µg/ml (upper panel). *Detection:* Chemiluminescence with exposure time of 10 seconds.



Detection of human STAT5a by immunohistochemistry.

Sample: FFPE section of human lung carcinoma. *Antibody:* Affinity purified rabbit anti-STAT5a (Cat. No. A303-494A Lot1) used at a dilution of 1:200 (1µg/ml). *Detection:* DAB