

ROC1 Antibody

Rabbit Polyclonal

Antigen Affinity Purified

Protein ID NP_055063.1

Catalog No. A303-462A

GeneID 9978

Lot No. A303-462A-1



APPLICATIONS	WB, IHC
SPECIES REACTIVITY	Human, Mouse
AMOUNT	100 µl
CONCENTRATION	1000 µg/ml
STORAGE/SHELF LIFE	2 - 8° C / 1 year from date of receipt
PHYSICAL STATE	Liquid
BUFFER	Tris-citrate/phosphate buffer, pH 7 to 8 containing 0.09% Sodium Azide
ISOTYPE	IgG
ORIGIN	USA
PRODUCTION PROCEDURES	Antibody was affinity purified using an epitope specific to ROC1 immobilized on solid support.

The epitope recognized by A303-462A maps to a region between residue 1 and 50 of human Regulator of Cullins 1 using the numbering given in entry NP_055063.1 (GeneID 9978).

Antibody concentration was determined by extinction coefficient: absorbance at 280 nm of 1.4 equals 1.0 mg of IgG.

APPLICATIONS Centrifuge tube to remove product from lid. Optimal working dilutions should be determined experimentally by the investigator. Prepare working dilution immediately before use.

Western Blot 1:2,000 – 1:10,000

Immunoprecipitation Not recommended

Immunohistochemistry 1:500 – 1:2,000. Epitope retrieval with citrate buffer pH 6.0 is recommended for FFPE tissue sections.

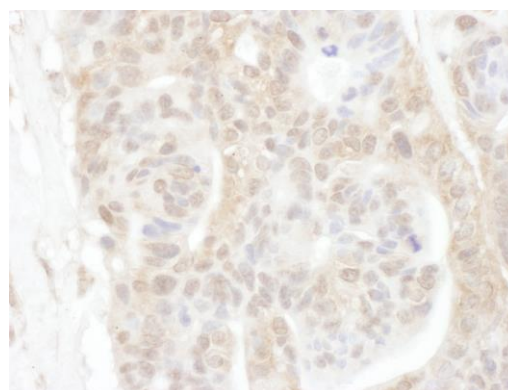
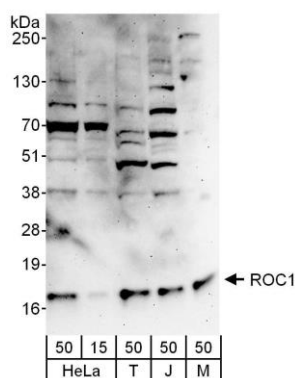
APPLICATION NOTES Western blot of lysates performed using standard western blot reagents and 4-12% SDS-PAGE.

IHC HUMAN CONTROLS Osteosarcoma, Ovarian Carcinoma

ADDITIONAL INFO <https://www.bethyl.com/product/A303-462A>

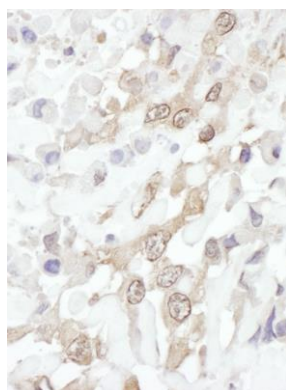
Use the link above to view SDS, a current list of citations, and other product specific information.

This document certifies that this product has met all of the quality control standards defined by Bethyl Laboratories, Inc.
Eric McIntush, PhD | Chief Scientific Officer Date: June 21, 2019



Detection of human and mouse ROC1 by western blot.
Samples: Whole cell lysate from HeLa (15 and 50 µg), HEK293T (T; 50 µg), Jurkat (J; 50 µg) and mouse NIH 3T3 (M; 50 µg) cells. *Antibody:* Affinity purified rabbit anti-ROC1 antibody A303-462A used for WB at 0.1 µg/ml. *Detection:* Chemiluminescence with an exposure time of 3 minutes.

Detection of human ROC1 by immunohistochemistry.
Sample: FFPE section of human ovarian carcinoma. *Antibody:* Affinity purified rabbit anti- ROC1 (Cat. No. A303-462A Lot1) used at a dilution of 1:1,000 (1 µg/ml). *Detection:* DAB



Detection of human ROC1 by immunohistochemistry.
Sample: FFPE section of human osteosarcoma. *Antibody:* Affinity purified rabbit anti- ROC1 (Cat. No. A303-462A Lot1) used at a dilution of 1:1,000 (1 µg/ml). *Detection:* DAB