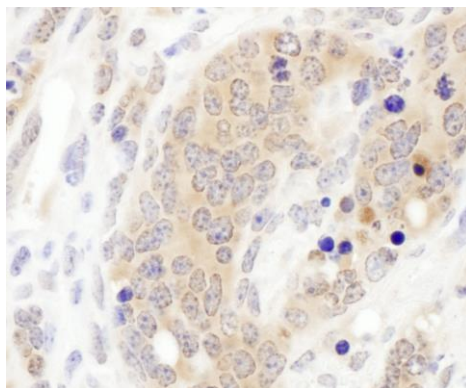


Detection of human and mouse CCT3 by western blot (h and m) and immunoprecipitation (h). *Samples:* Whole cell lysate from HeLa (15 and 50 µg for WB; 1 mg for IP, 20% of IP loaded), HEK293T (T; 50 µg), Jurkat (J; 50 µg) and mouse NIH 3T3 (M; 50 µg) cells. *Antibodies:* Affinity purified rabbit anti-CCT3 antibody A303-459A used for WB at 0.04 µg/ml (A) and 0.4 µg/ml (B) and used for IP at 6 µg/mg lysate. CCT3 was also immunoprecipitated by rabbit anti-CCT3 antibody A303-458A, which recognizes an upstream epitope. *Detection:* Chemiluminescence with exposure times of 3 seconds (A and B).

Detection of human CCT3 by immunohistochemistry. *Sample:* FFPE section of human lung carcinoma. *Antibody:* Affinity purified rabbit anti-CCT3 (Cat. No. A303-459A Lot1) used at a dilution of 1:200 (1 µg/ml). *Detection:* DAB. *Counterstain:* hematoxylin (blue).



Detection of mouse CCT3 by immunohistochemistry. *Sample:* FFPE section of mouse teratoma. *Antibody:* Affinity purified rabbit anti-CCT3 (Cat. No. A303-459A Lot1) used at a dilution of 1:200 (1 µg/ml). *Detection:* DAB